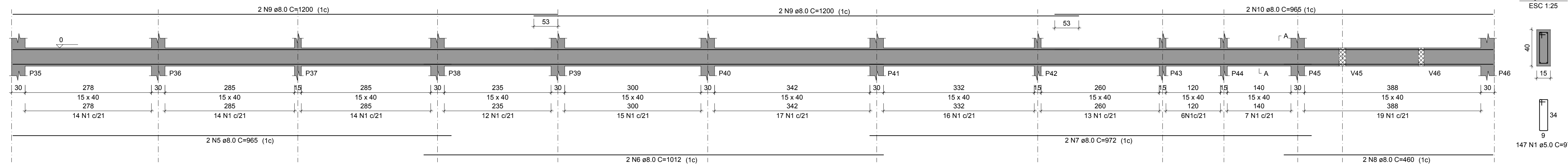
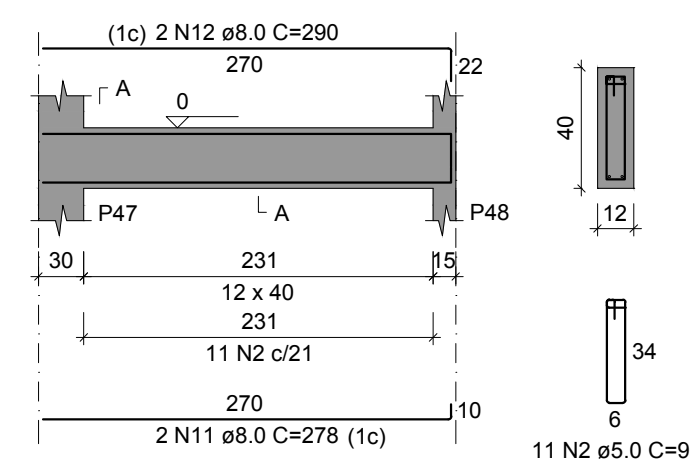


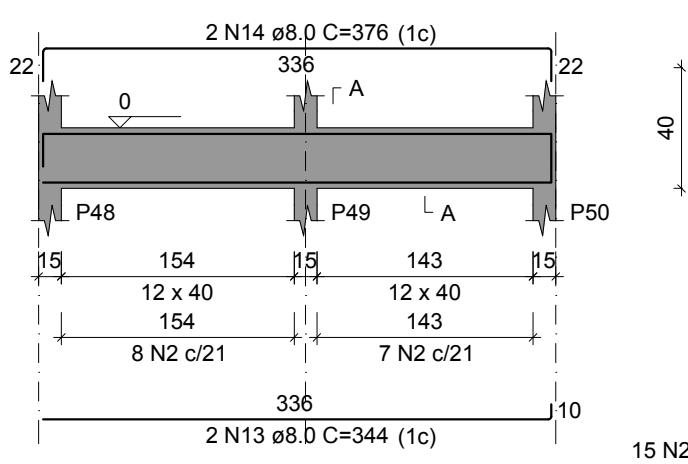
V15
ESC 1:50



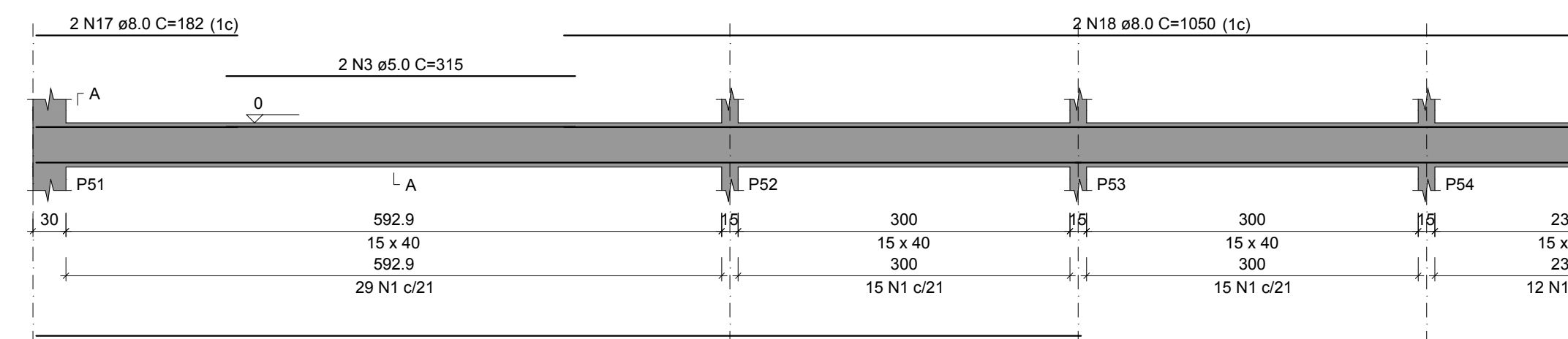
V16
ESC 1:50



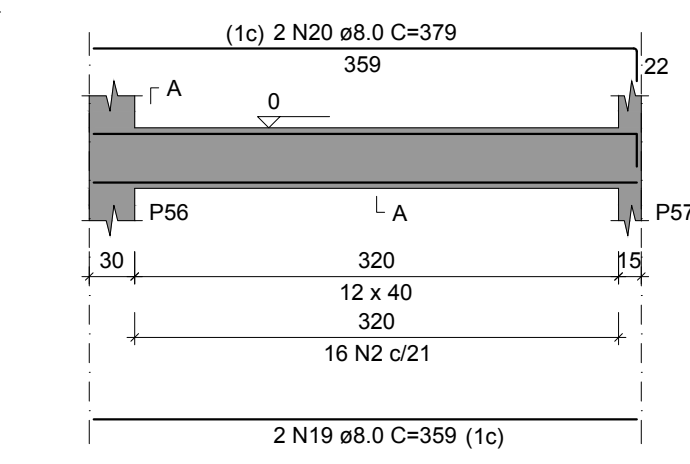
V17
ESC 1:50



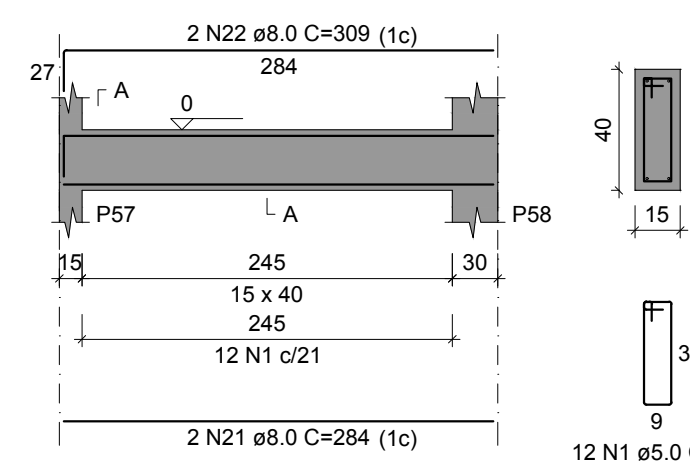
V18
ESC 1:50



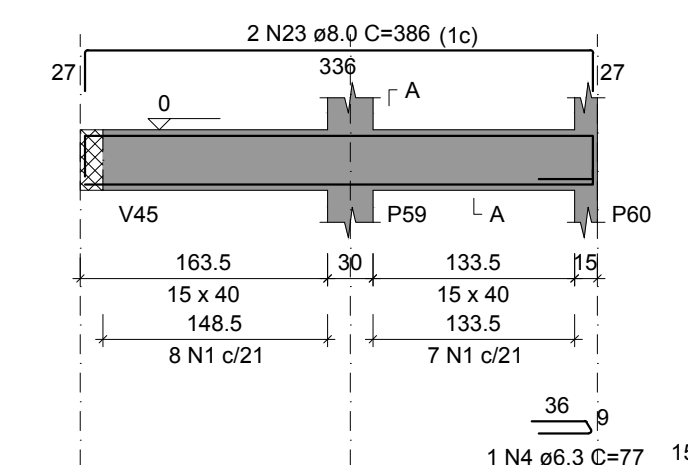
V19
ESC 1:50



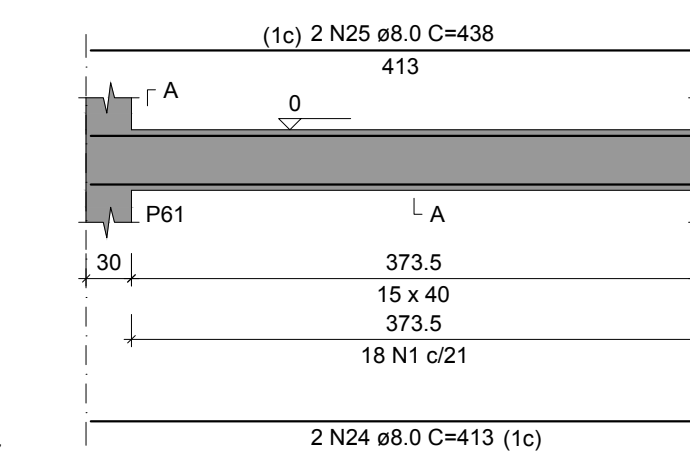
V20
ESC 1:50



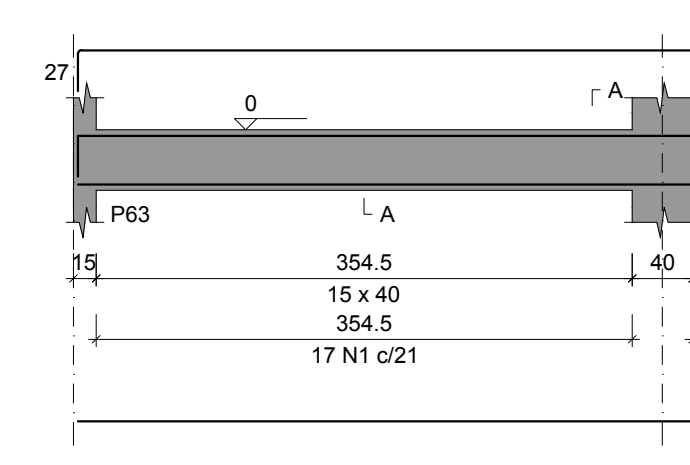
V21
ESC 1:50



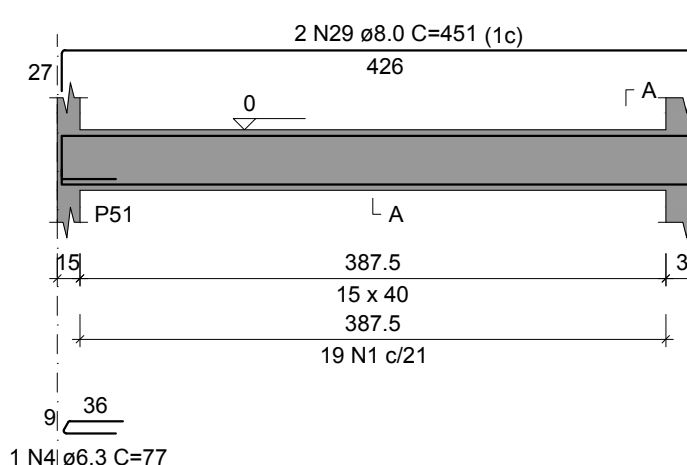
V22
ESC 1:50



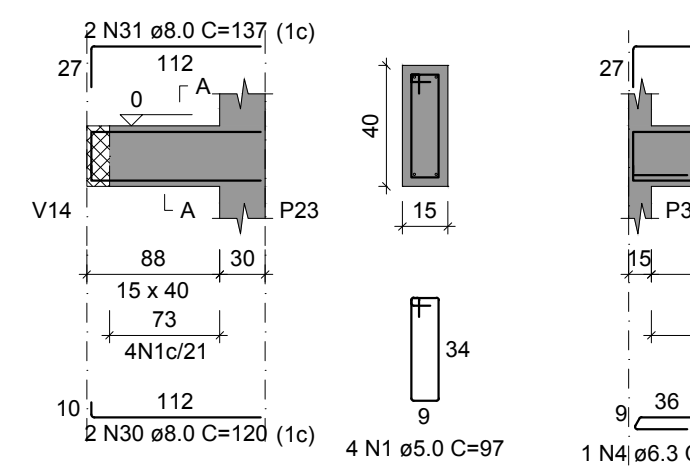
V23
ESC 1:50



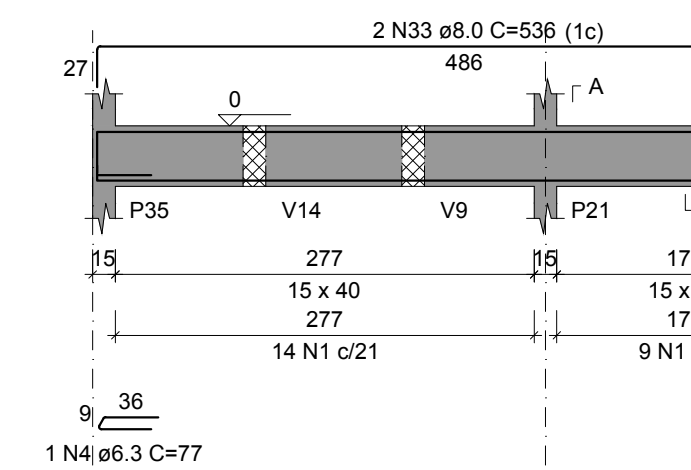
V24
ESC 1:50



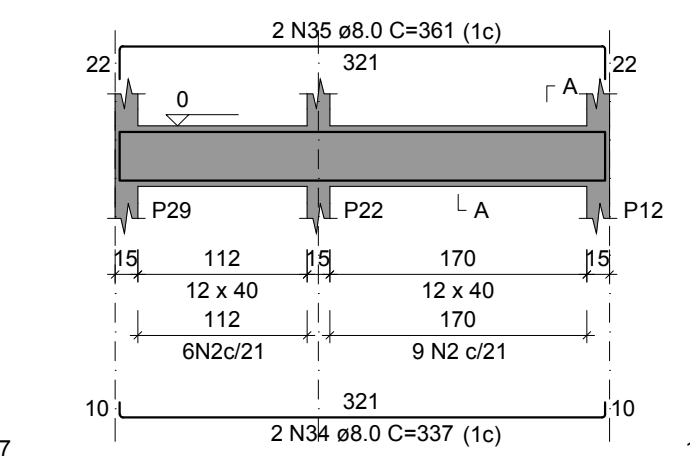
V25
ESC 1:50



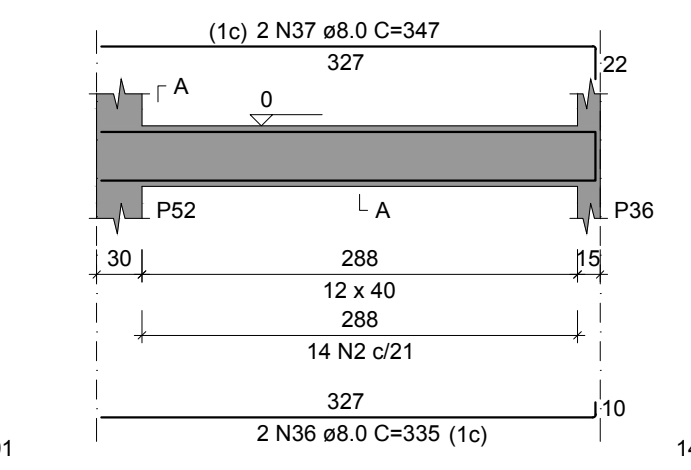
V26
ESC 1:50



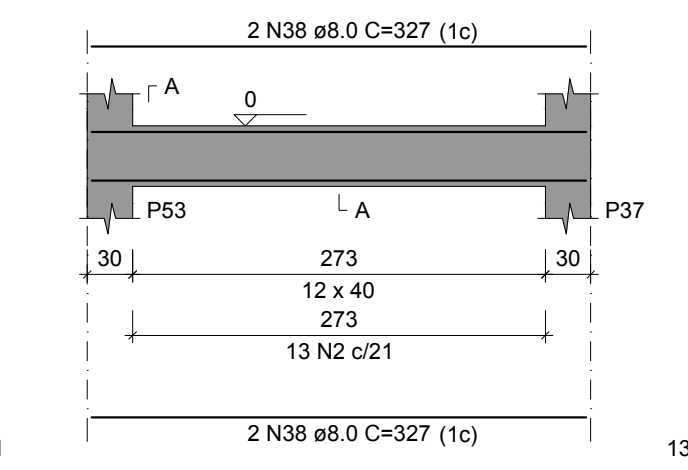
V27
ESC 1:50



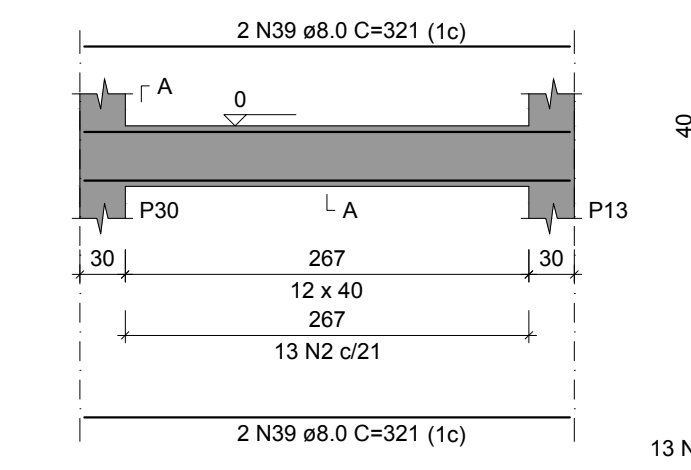
V28
ESC 1:50



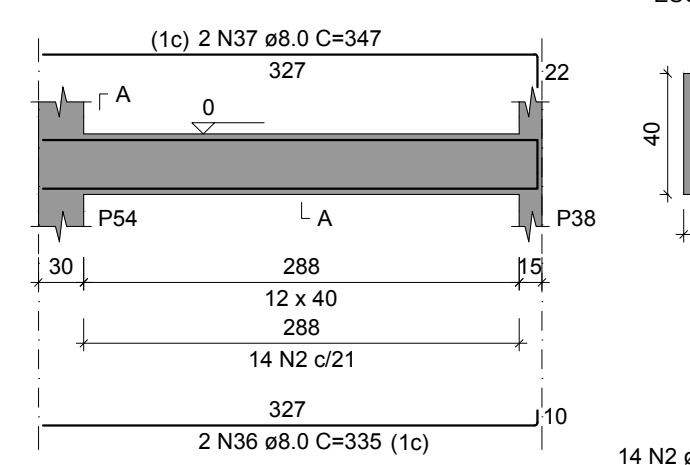
V29
ESC 1:50



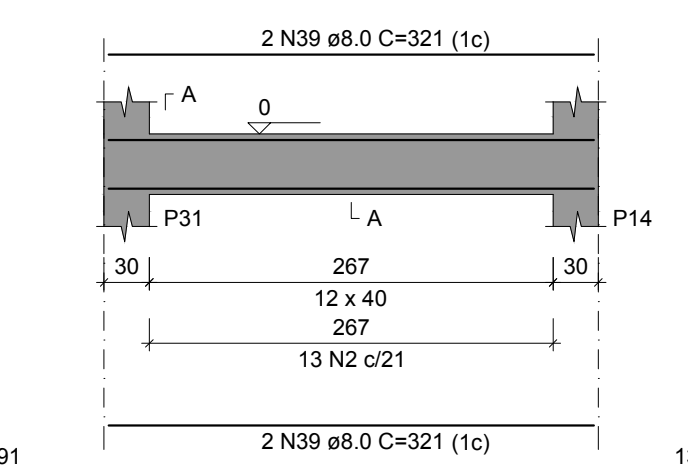
V30
ESC 1:50



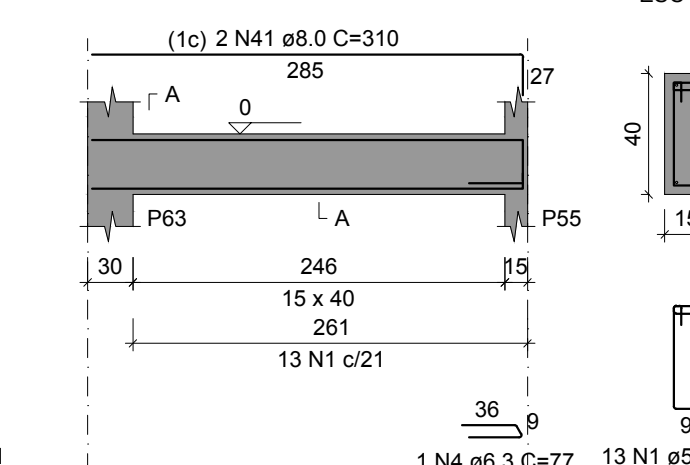
V31
ESC 1:50



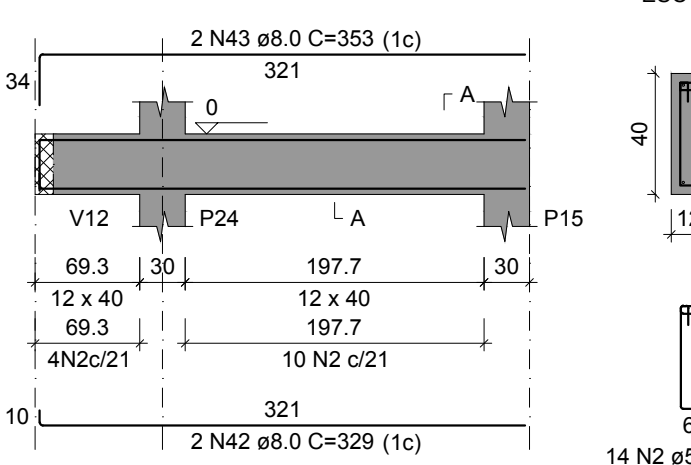
V32
ESC 1:50



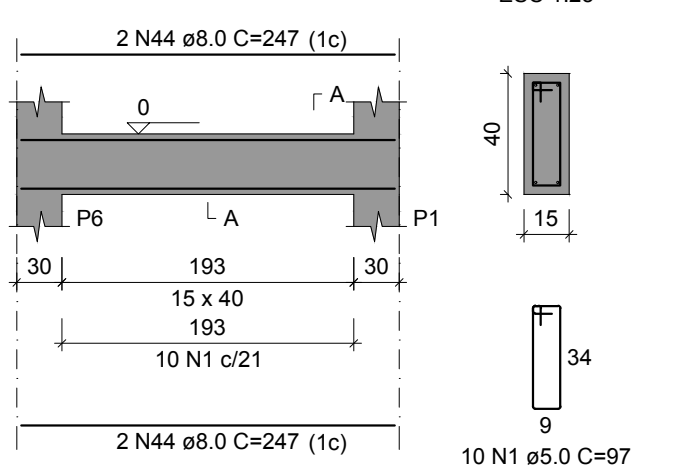
V33
ESC 1:50



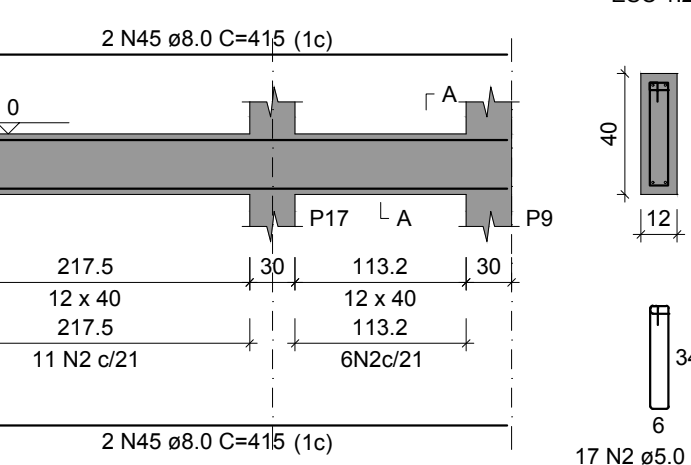
V34
ESC 1:50



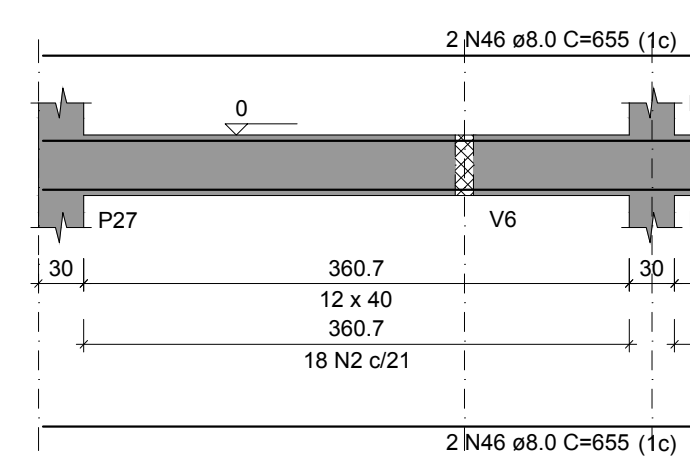
V35
ESC 1:50



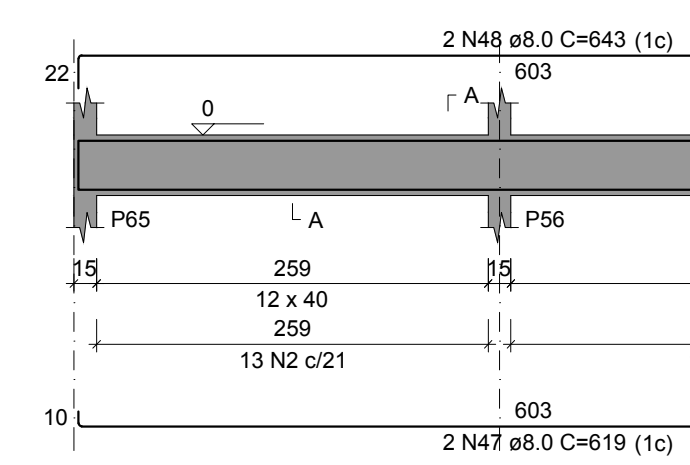
V36
ESC 1:50



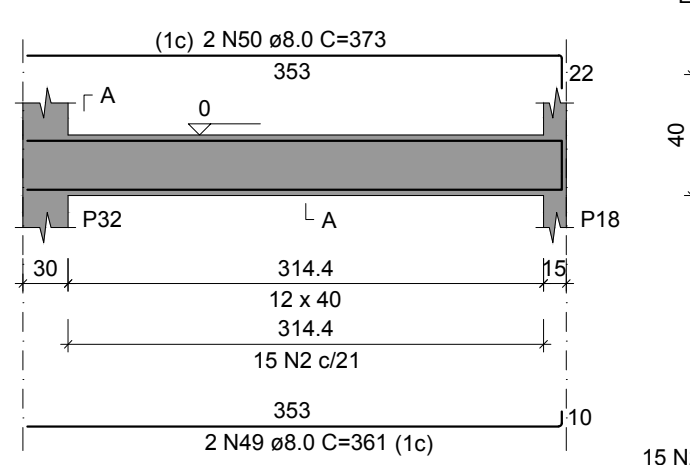
V37
ESC 1:50



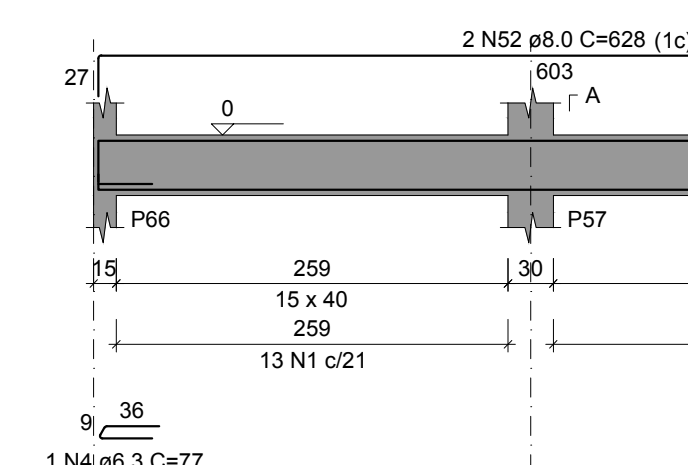
V38
ESC 1:50



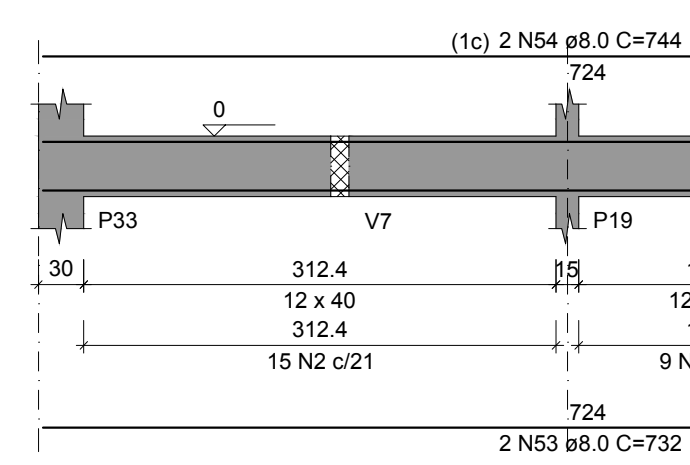
V39
ESC 1:50



V40
ESC 1:50



V41
ESC 1:50



RELAÇÃO DO AÇO

AÇO	N	DIAM (mm)	QUANT	C.UNIT (cm)	C.TOTAL (cm)
V15	1	5.0	405	97	39285
V16	1	5.0	258	91	23478
V17	1	5.0	258	91	23478
V18	1	5.0	258	91	23478
V19	1	5.0	258	91	23478
V20	1	5.0	258	91	23478
V21	1	5.0	258	91	23478
V22	1	5.0	258	91	23478
V23	1	5.0	258	91	23478
V24	1	5.0	258	91	23478
V25	1	5.0	258	91	23478
V26	1	5.0	258	91	23478
V27	1	5.0	258	91	23478
V28	1	5.0	258	91	23478
V29	1	5.0	258	91	23478
V30	1	5.0	258	91	23478
V31	1	5.0	258	91	23478
V32	1	5.0	258	91	23478
V33	1	5.0	258	91	23478
V34	1	5.0	258	91	23478
V35	1	5.0	258	91	23478
V36	1	5.0	258	91	23478
V37	1	5.0	258	91	23478
V38	1	5.0	258	91	23478
V39	1	5.0	258	91	23478
V40	1	5.0	258	91	23478
V41	1	5.0	258	91	23478

AÇO	N	DIAM (mm)	QUANT	C.UNIT (cm)	C.TOTAL (cm)
CA60	1	5.0	405	97	39285
CA60	2	5.0	258	91	23478
CA60	3	5.0	258	91	23478
CA60	4	5.0	258	91	23478
CA60	5	5.0	258	91	23478
CA60	6	5.0	258	91	23478
CA60	7	5.0	258	91	23478
CA60	8	5.0	258	91	23478
CA60	9	5.0	258	91	23478
CA60	10	5.0	258	91	23478
CA60	11	5.0	258	91	23478
CA60	12	5.0	258	91	23478
CA60	13	5.0	258	91	23478
CA60	14	5.0	258	91	23478
CA60	15	5.0	258	91	23478
CA60	16	5.0	258	91	23478
CA60	17	5.0	258	91	23478
CA60	18	5.0	258	91	23478
CA60	19	5.0	258	91	23478
CA60	20	5.0	258	91	23478
CA60	21	5.0	258	91	23478
CA60	22	5.0	258	91	23478
CA60	23	5.0	258	91	23478
CA60	24	5.0	258	91	23478
CA60	25	5.0	258	91	23478
CA60	26	5.0	258	91	23478
CA60	27	5.0	258	91	23478
CA60	28	5.0	258	91	23478
CA60	29	5.0	258	91	23478
CA60	30	5.0	258	91	23478
CA60	31	5.0	258	91	23478
CA60	32	5.0	258	91	23478
CA60	33	5.0	258	91	23478
CA60	34	5.0	258	91	23478
CA60	35	5.0	258	91	23478
CA60	36	5.0	258	91	23478
CA60	37	5.0	258	91	23478
CA60	38	5.0	258	91	23478
CA60	39	5.0	258	91	23478
CA60	40	5.0	258	91	23478
CA60	41	5.0	258	91	23478
CA60	42	5.0	258	91	23478
CA60	43	5.0	258	91	23478
CA60	44	5.0	258	91	23478
CA60	45	5.0	258	91	23478
CA60	46	5.0	258	91	23478
CA60	47	5.0	258	91	23478
CA60	48	5.0	258	91	23478
CA60	49	5.0	258	91	23478
CA60	50	5.0	258	91	23478
CA60	51	5.0	258	91	23478
CA60	52	5.0	258	91	23478
CA60	53	5.0	258	91	23478
CA60	54	5.0	258	91	23478

RESUMO DO AÇO				
AÇO	DIAM (mm)	C.TOTAL (m)	PESO + 10% (kg)	1.2 (kg)
CA50	6.3	4.8	1.2	1.2
CA60	5.0	613.7	266.4	107.5
CA60	5.0	633.9	266.4	107.5

PESO TOTAL (kg)
CA50 267.6
CA60 107.5

Volume de concreto (C-25) = 8.38 m³
Área de forma = 142.35 m²

PROJETO ARQUITETÔNICO:
EXECUÇÃO:
RESP. TÉCNICO:
CONSTRUÇÃO:
PROPRIETÁRIO:

SECRETARIA MUNICIPAL DE SAÚDE
Obra: **UBS DEUS É AMOR**
End.: Passagem 15 de Outubro, 266 - Cidade Nova, Ananindeua - PA, CEP: 67133-105

ANANINDEUA É TRABALHO

Equipe Técnica: Departamento de Projetos
Área Existente: 312,24 m²
Área Total: 312,24 m²
Atualização: Março/2014

Data: Abril/2014
Escala: 1:50

Conteúdo: ESTRUTURA - DETALHE DOS BLOCOS

ESTRUTURAL
05
16