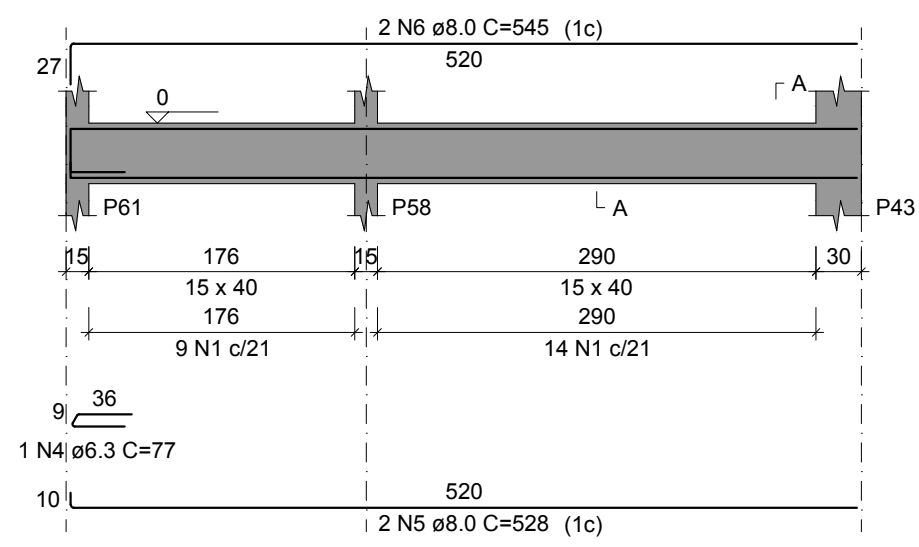
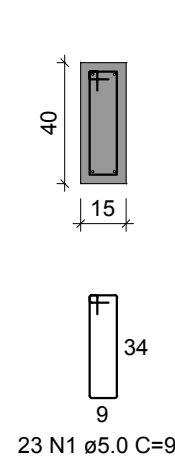


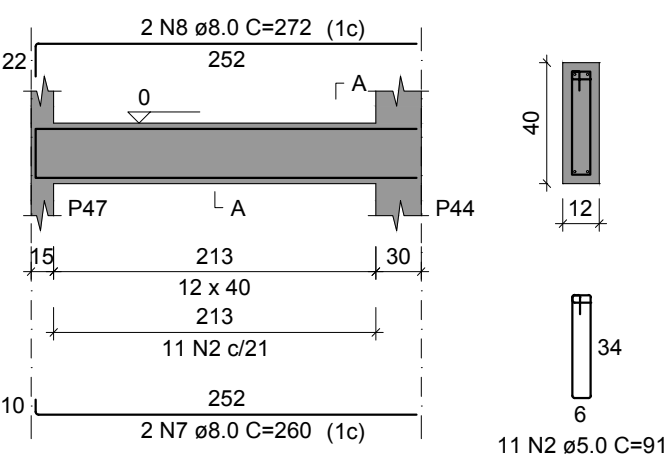
**V42**  
ESC 1:50



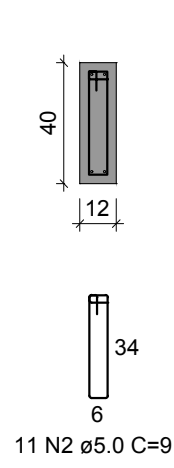
SEÇÃO A-A  
ESC 1:25



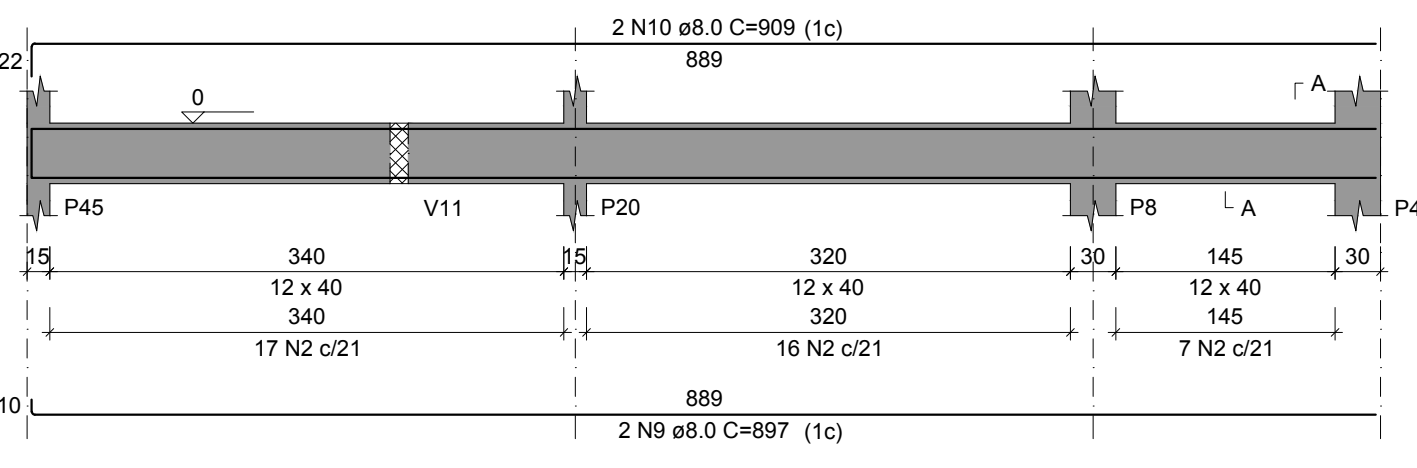
**V43**  
ESC 1:50



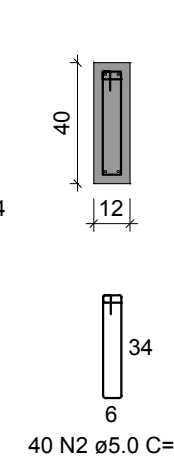
SEÇÃO A-A  
ESC 1:25



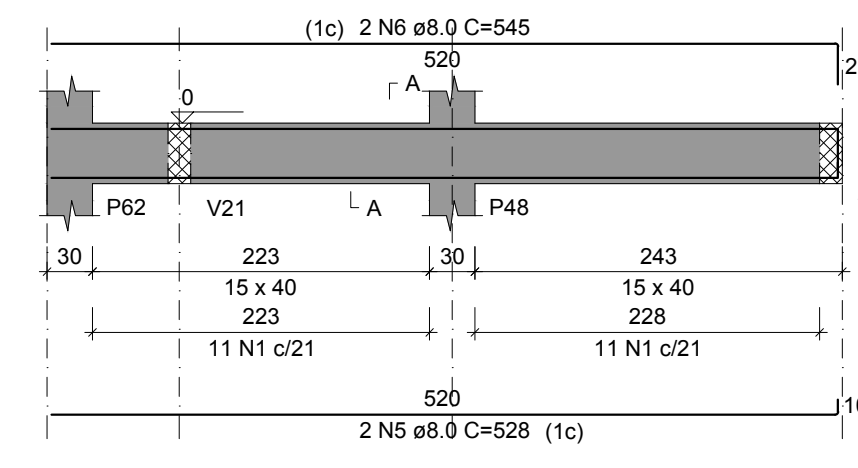
**V44**  
ESC 1:50



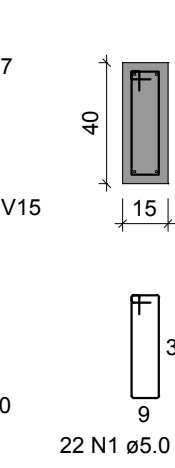
SEÇÃO A-A  
ESC 1:25



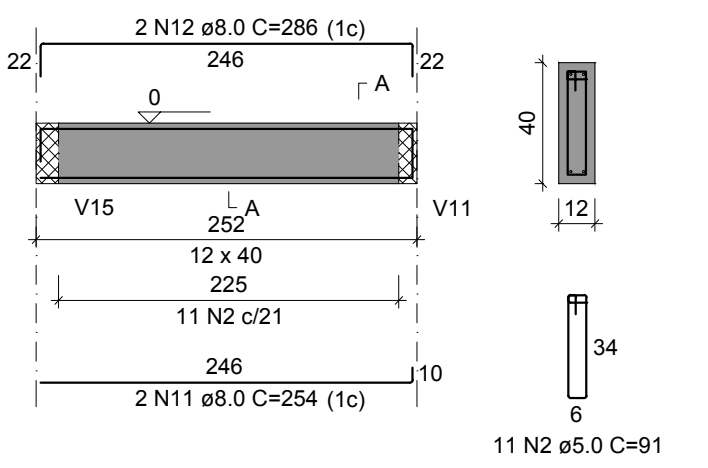
**V45**  
ESC 1:50



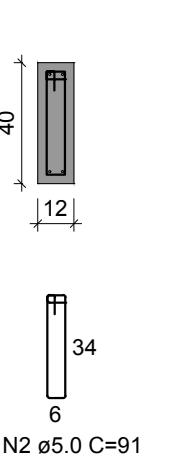
SEÇÃO A-A  
ESC 1:25



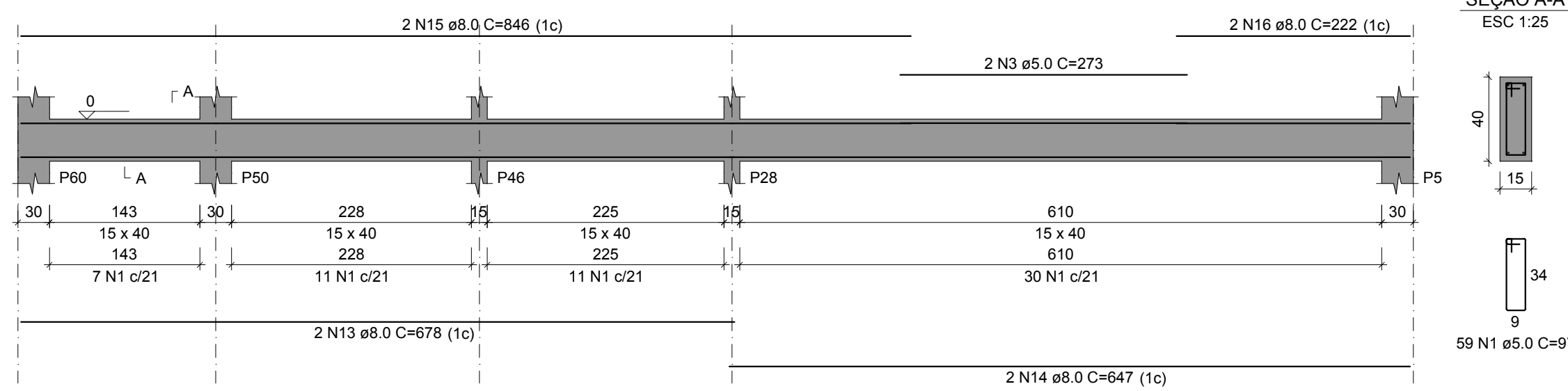
**V46**  
ESC 1:50



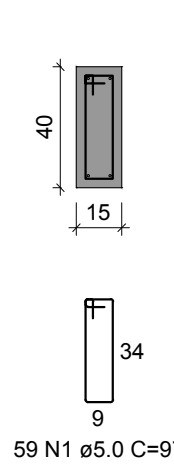
SEÇÃO A-A  
ESC 1:25



**V47**  
ESC 1:50



SEÇÃO A-A  
ESC 1:25



RELAÇÃO DO AÇO

AÇO	N	DIAM (mm)	QUANT	C.UNIT (cm)	C.TOTAL (cm)
CA60	1	5.0	104	97	10088
	2	5.0	62	91	5642
	3	5.0	2	273	546
	4	6.3	1	77	77
	5	8.0	4	528	2112
	6	8.0	4	545	2180
	7	8.0	2	260	520
	8	8.0	2	272	544
	9	8.0	2	897	1794
	10	8.0	2	909	1818
	11	8.0	2	254	508
	12	8.0	2	286	572
	13	8.0	2	678	1356
	14	8.0	2	647	1294
	15	8.0	2	846	1692
	16	8.0	2	222	444

RESUMO DO AÇO

AÇO	DIAM (mm)	C.TOTAL (m)	PESO + 10% (kg)
CA50	6.3	0.8	0.2
CA60	8.0	148.3	64.4
CA60	5.0	162.8	27.6
<b>PESO TOTAL (kg)</b>			
CA50			64.6
CA60			27.6

Volume de concreto (C-25) = 2.10 m³  
Área de forma = 35.52 m²


PROJETO ARQUITETÔNICO:

EXECUÇÃO:

RESP. TÉCNICO:

CONSTRUÇÃO:

PROPRIETÁRIO:

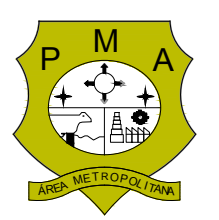


**ANANINDEUA**  
É TRABALHO

**SECRETARIA MUNICIPAL DE SAÚDE**

Obra: **UBS MURURÉ**

End.: Passagem 15 de Outubro, 266 - Cidade Nova, Ananindeua - PA.  
CEP: 67133-105



Equipe Técnica: Departamento de Projetos	Área Existente: 312,24 m²	Data: Abril/2014	Conteúdo: ESTRUTURA - DETALHE DOS BLOCOS
CAD:	Área Total: 312,24 m²	Escala: 1:50	Secretário:
		Atualização: Março/2014	

**ESTRUTURAL**

**06**

16