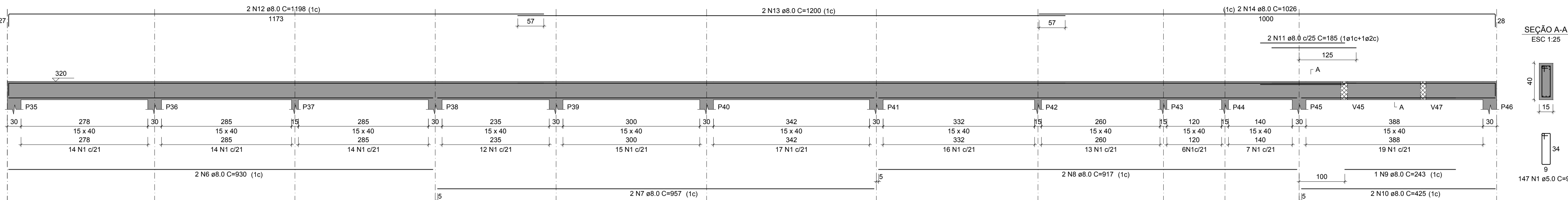
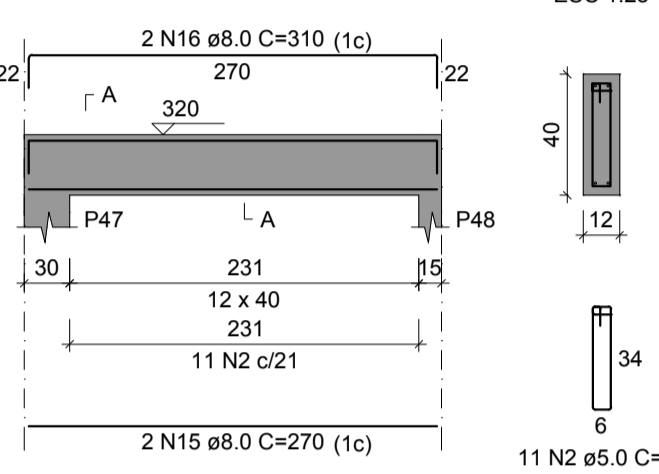


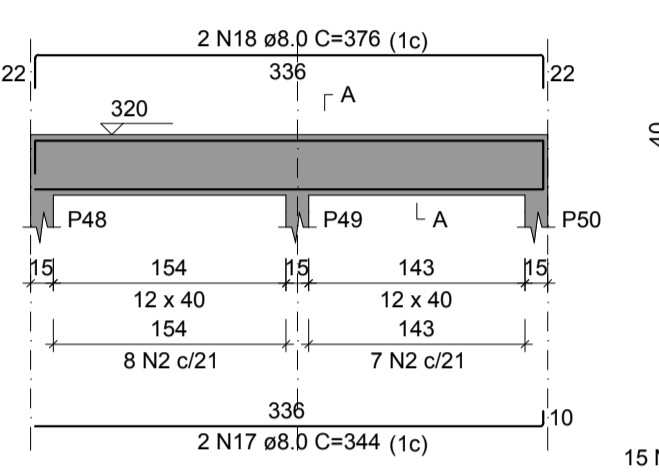
V15  
ESC 1:50



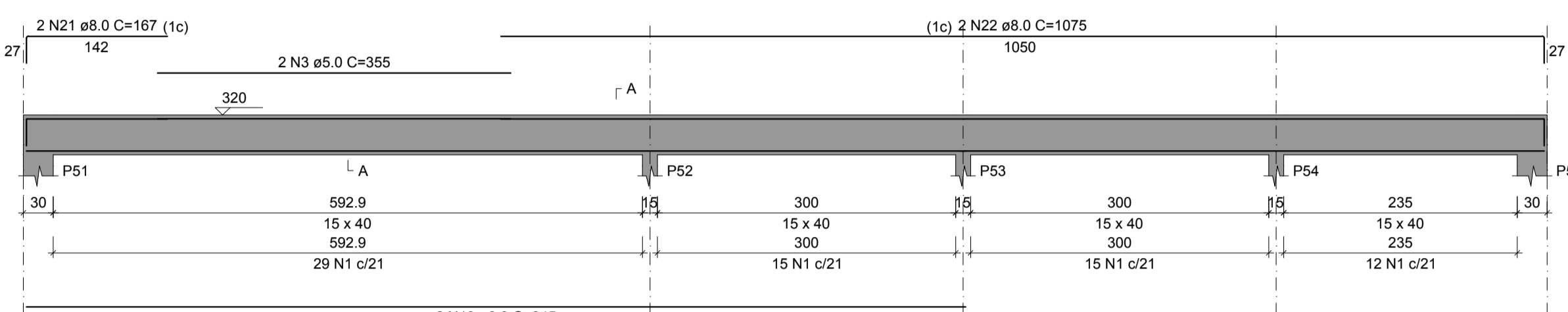
V16  
ESC 1:50



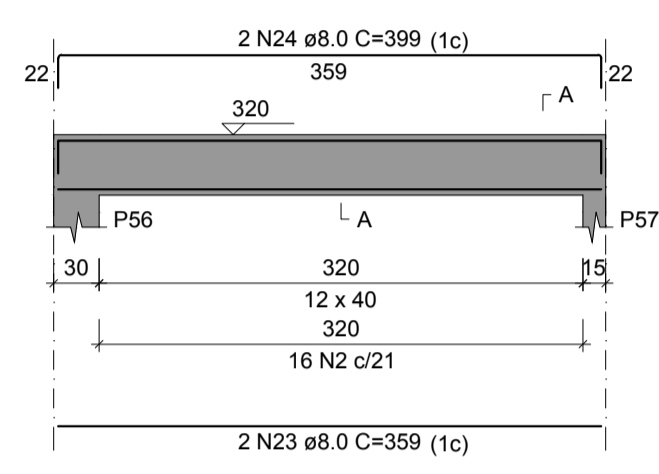
V17  
ESC 1:50



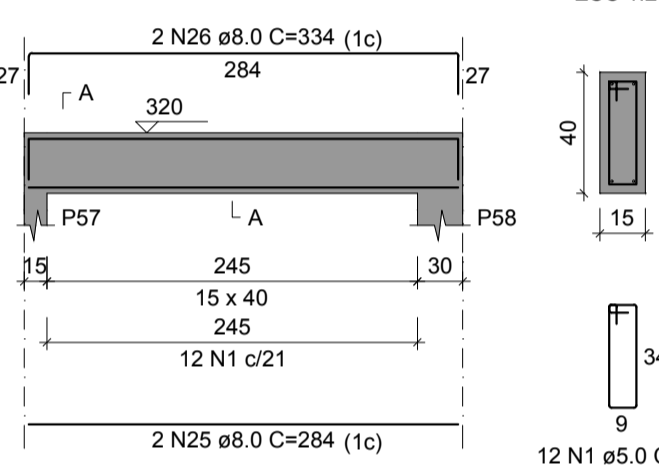
V18  
ESC 1:50



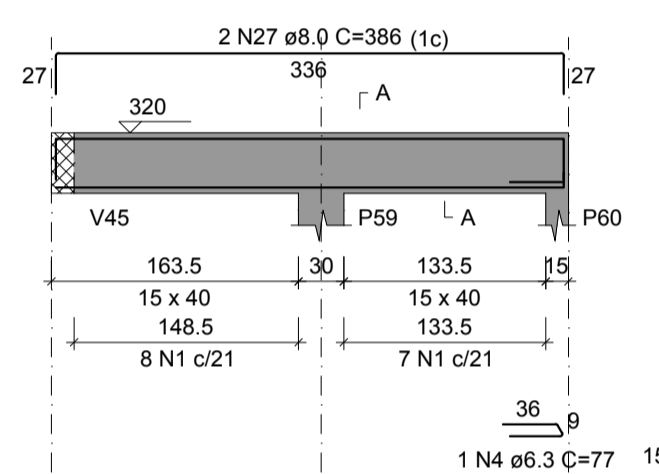
V19  
ESC 1:50



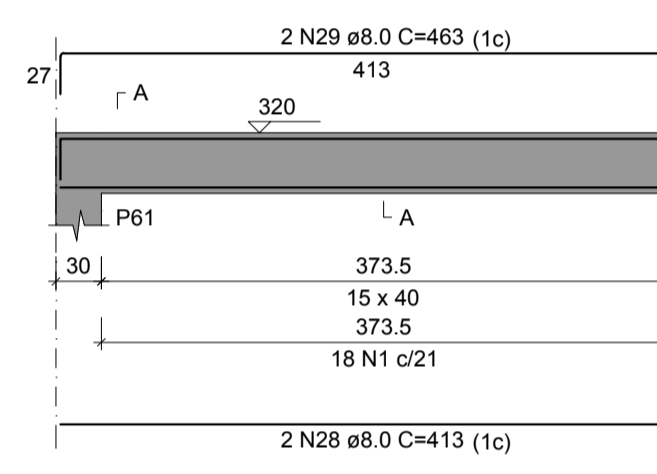
V20  
ESC 1:50



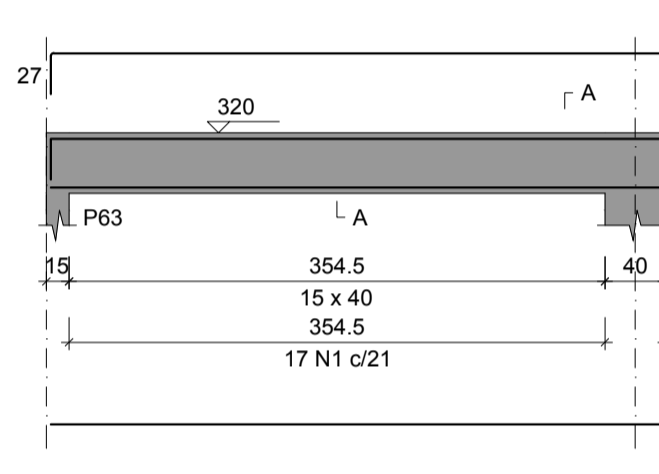
V21  
ESC 1:50



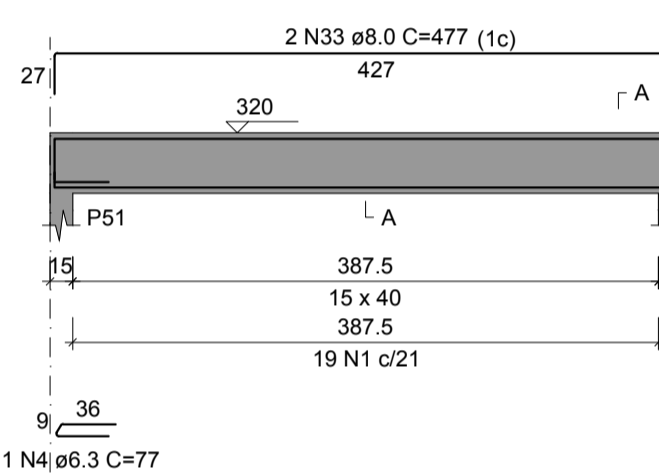
V22  
ESC 1:50



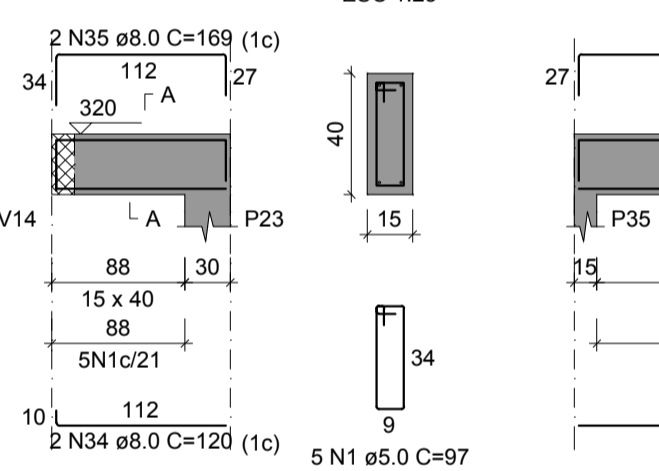
V23  
ESC 1:50



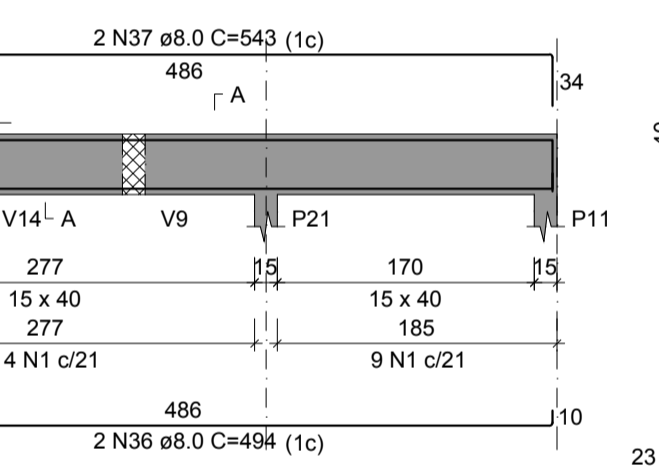
V24  
ESC 1:50



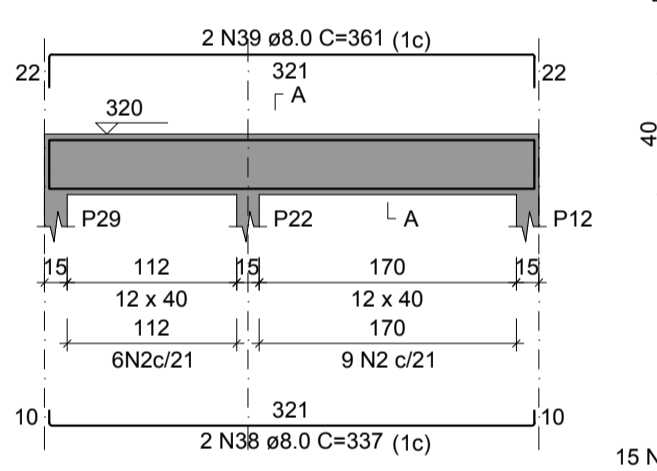
V25  
ESC 1:50



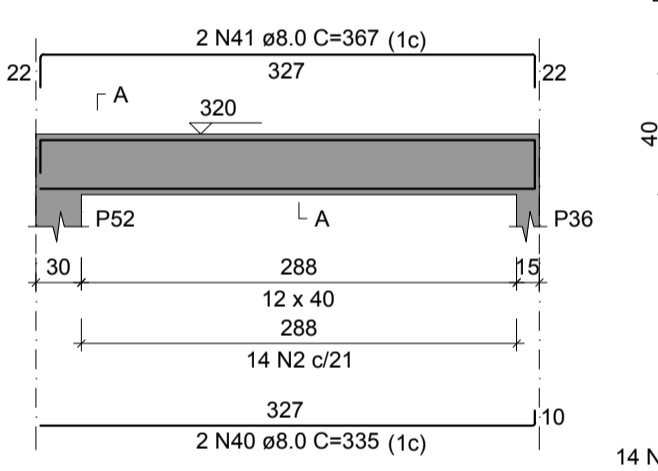
V26  
ESC 1:50



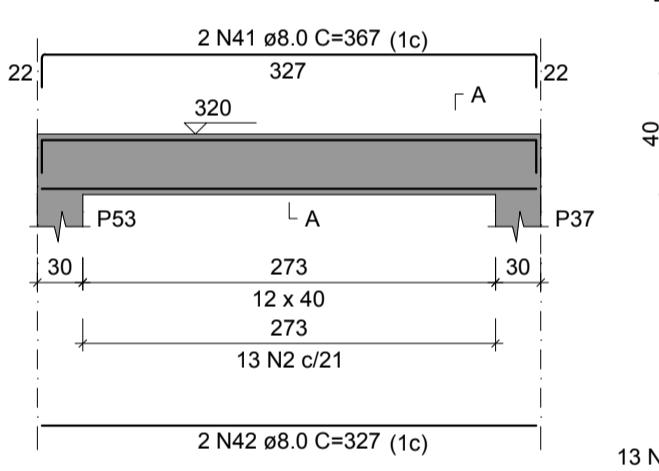
V27  
ESC 1:50



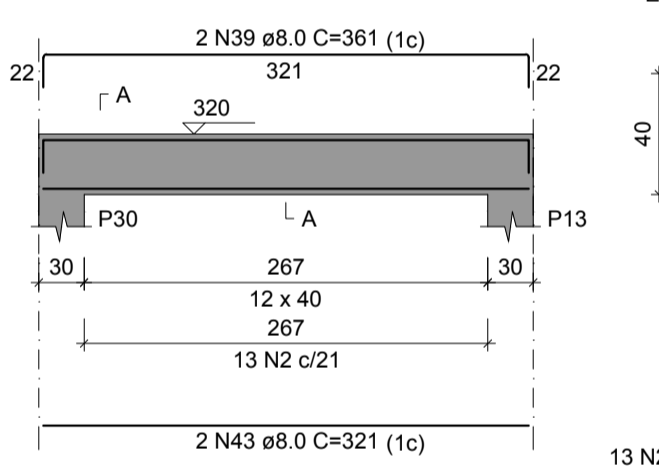
V28  
ESC 1:50



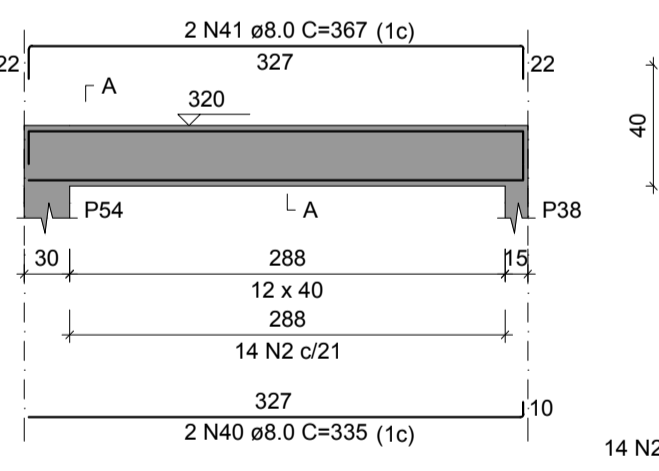
V29  
ESC 1:50



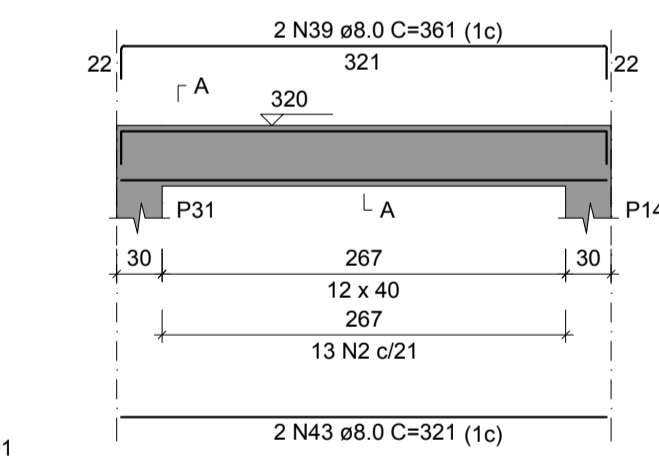
V30  
ESC 1:50



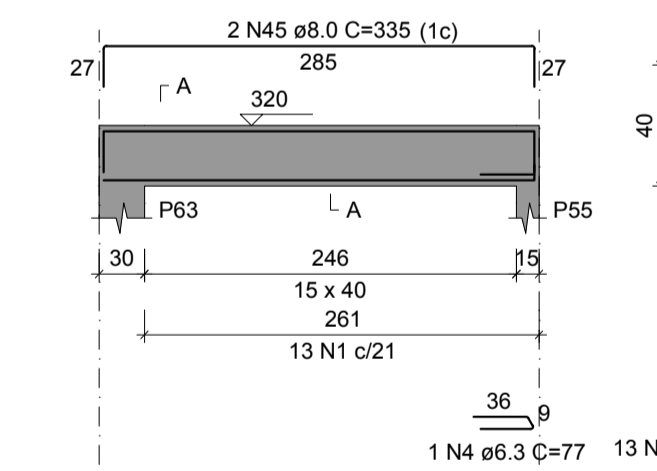
V31  
ESC 1:50



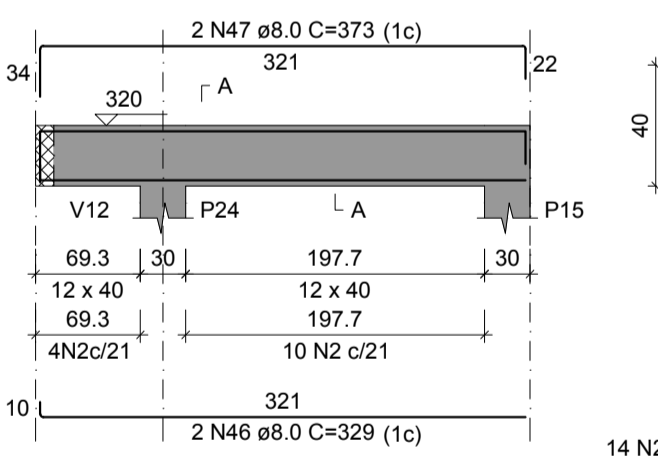
V32  
ESC 1:50



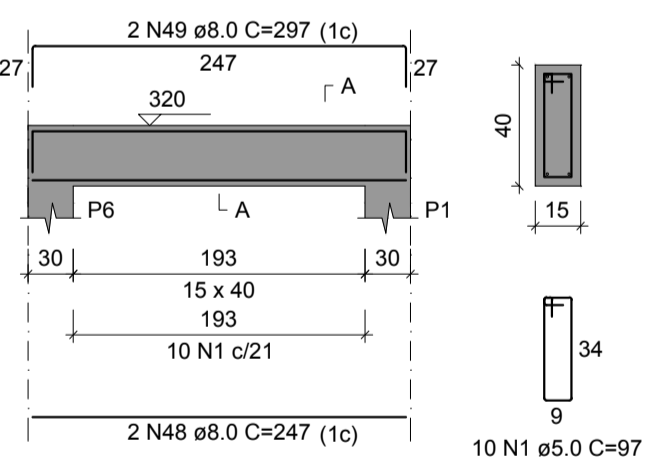
V33  
ESC 1:50



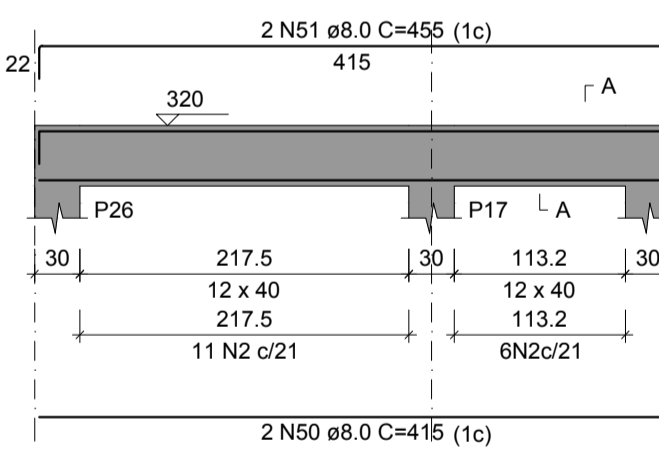
V34  
ESC 1:50



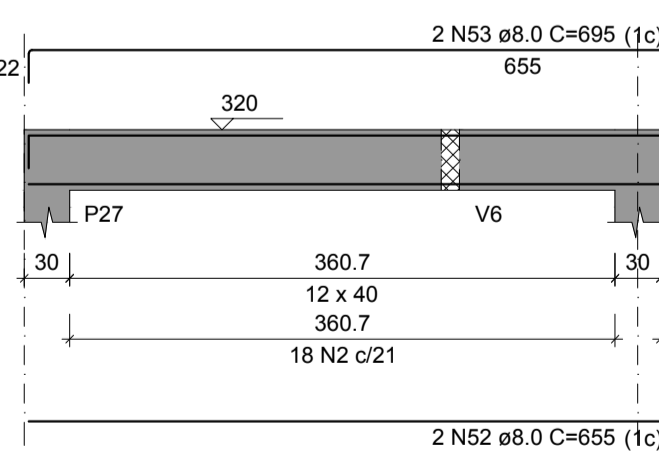
V35  
ESC 1:50



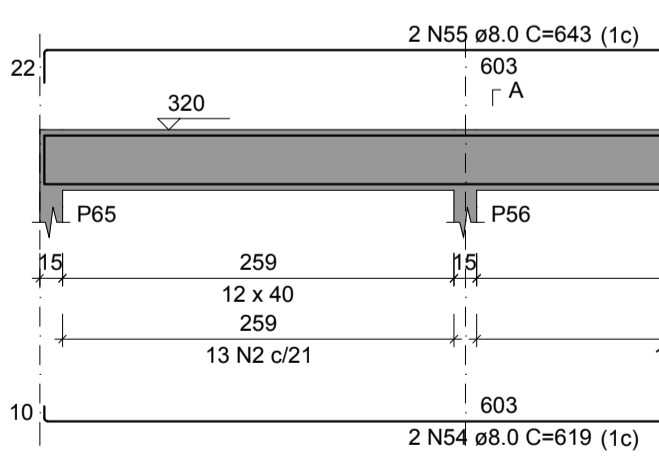
V36  
ESC 1:50



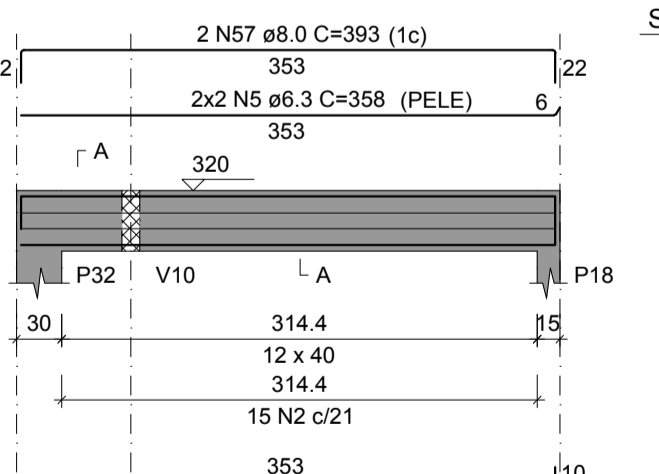
V37  
ESC 1:50



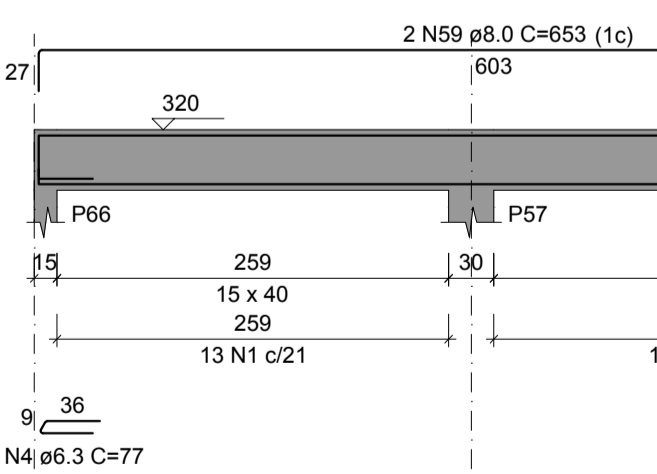
V38  
ESC 1:50



V39  
ESC 1:50



V40  
ESC 1:50



RELAÇÃO DO AÇO

AÇO	N	DIAM (mm)	QUANT	C.UNIT (cm)	C.TOTAL (cm)
CA60	1	5.0	406	97	39362
V18	2	5.0	226	91	20566
V21	3	5.0	2	355	710
V24	4	6.3	4	377	308
V27	5	6.3	4	358	1432
V30	6	8.0	2	930	1860
V33	7	8.0	1	243	243
V34	8	8.0	2	957	1914
V36	9	8.0	2	917	1834
V39	10	8.0	1	243	243
	11	8.0	2	185	370
	12	8.0	2	1198	2396
	13	8.0	2	1200	2400
	14	8.0	2	1026	2052
	15	8.0	2	270	540
	16	8.0	2	310	620
	17	8.0	4	344	1376
	18	8.0	2	376	752
	19	8.0	2	945	1890
	20	8.0	2	567	1134
	21	8.0	2	167	334
	22	8.0	2	1075	2150
	23	8.0	2	359	718
	24	8.0	2	399	798
	25	8.0	2	284	568
	26	8.0	2	334	668
	27	8.0	2	386	772
	28	8.0	2	413	826
	29	8.0	2	463	926
	30	8.0	2	1056	2112
	31	8.0	2	1106	2212
	32	8.0	2	435	870
	33	8.0	2	477	954
	34	8.0	2	120	240
	35	8.0	2	169	338
	36	8.0	2	454	908
	37	8.0	2	543	1086
	38	8.0	2	337	674
	39	8.0	2	367	734
	40	8.0	4	335	1340
	41	8.0	6	367	2202
	42	8.0	2	327	654
	43	8.0	4	321	1284
	44	8.0	2	293	586
	45	8.0	2	335	670
	46	8.0	2	329	658
	47	8.0	2	373	746
	48	8.0	2	247	494
	49	8.0	2	297	594
	50	8.0	15	830	12450
	51	8.0	4	455	1820
	52	8.0	2	655	1310
	53	8.0	2	695	1390
	54	8.0	2	619	1238
	55	8.0	2	643	1286
	56	8.0	2	361	722
	57	8.0	2	353	706
	58	8.0	2	611	1222
	59	8.0	2	663	1326

RESUMO DO AÇO

AÇO	DIAM (mm)	C.TOTAL (m)	PESO + 10% (kg)
CA50	6.3	17.4	4.7
CA60	8.0	599	260
CA60	5.0	656.6	102.8
<b>PESO TOTAL (kg)</b>			
CA50		264.7	
CA60		102.8	

Volume de concreto (C-25) = 8.03 m³  
Área de forma = 135.63 m²


PROJETO ARQUITETÔNICO: \_\_\_\_\_

EXECUÇÃO: \_\_\_\_\_

RESP. TÉCNICO: \_\_\_\_\_

CONSTRUÇÃO: \_\_\_\_\_

PROPRIETÁRIO: \_\_\_\_\_




**ANANINDEUA  
É TRABALHO**

**SECRETARIA MUNICIPAL DE SAÚDE**

Obra: **UBS MURURÉ**

End.: Passagem 15 de Outubro, 265 - Cidade Nova, Ananindeua - PA, CEP: 67133-105



**ANANINDEUA  
MUNICIPAL**

Equipe Técnica: Departamento de Projetos	Área Existente: 312,24 m²	Data: Abril/2014	Conteúdo: ESTRUTURA - DETALHE DOS BLOCOS
CAD: _____	Área Total: 312,24 m²	Escala: 1:50	Atualização: Março/2014
		Secretário: _____	

15

16