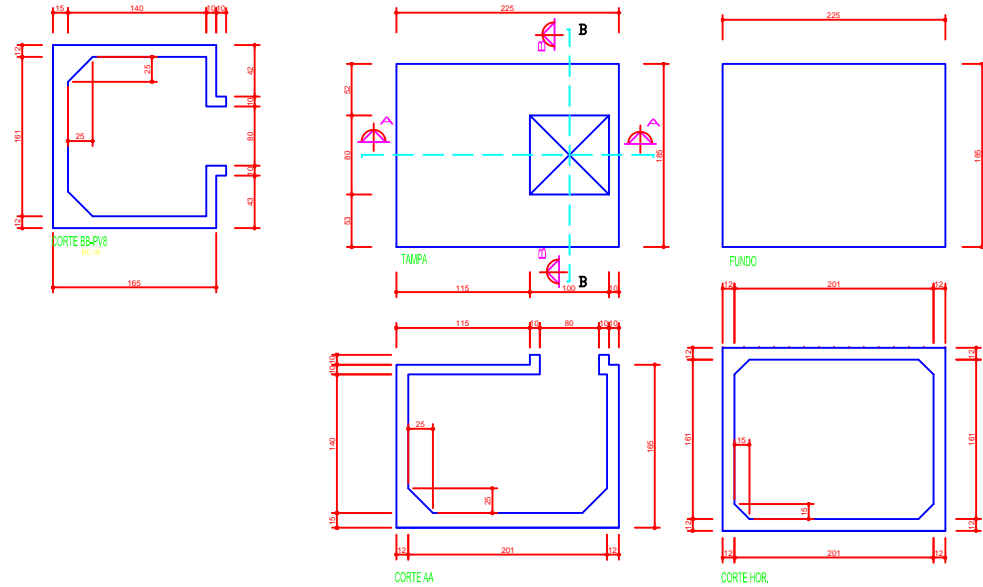


PLANTA: Forma do Corpo do Poço Visita-PV-SIMPLES-225x115x165



PLANTA: Armadura do Corpo do Poço Visita-PV-SIMPLES

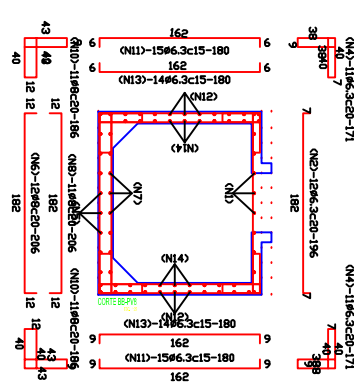


TABELA DE AÇO PARA O CORPO DO POÇO VISITA-PV10SIMPLES

RELAÇÃO DE AÇO

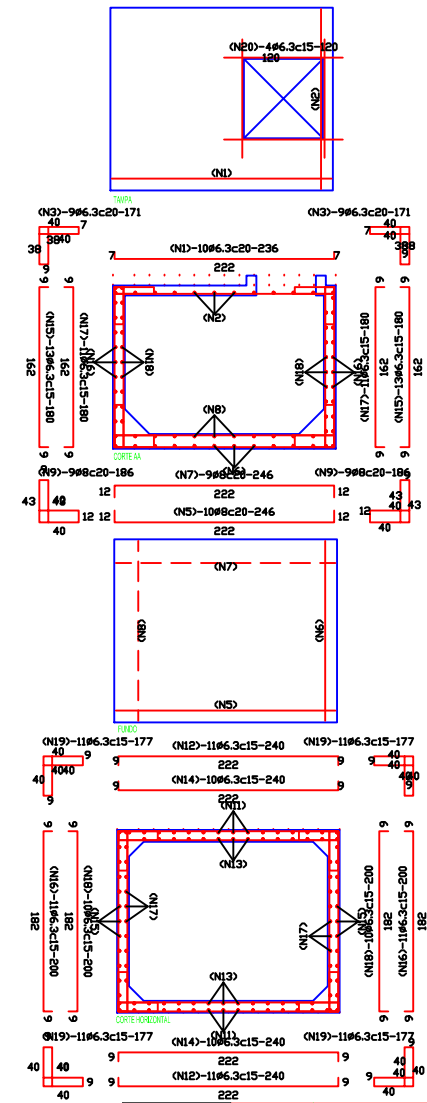
POSICAO	QUANTIDADE	BITOLA	COMP.UNIT	COMP.TOTAL	Comp
1	1	Ø6.30	225	225	2250
2	12	Ø6.30	196	2352	2352
3	9	Ø6.30	171	1539	1539
3	9	Ø6.30	171	1539	1539
4	11	Ø6.30	171	1881	1881
5	10	Ø6.30	246	2460	2460
6	12	Ø6.30	206	2472	2472
7	9	Ø6.30	246	2214	2214
8	11	Ø6.30	206	2266	2266
9	9	Ø6.30	186	1674	1674
9	9	Ø6.30	186	1674	1674
10	11	Ø6.30	186	2046	2046
11	10	Ø6.30	186	1860	1860
11	10	Ø6.30	186	1860	1860
11	10	Ø6.30	240	2400	2400
12	11	Ø6.30	240	2640	2640
13	14	Ø6.30	180	2520	2520
13	14	Ø6.30	180	2520	2520
14	10	Ø6.30	240	2400	2400
14	10	Ø6.30	240	2400	2400
15	13	Ø6.30	180	2340	2340
15	13	Ø6.30	180	2340	2340
16	11	Ø6.30	200	2200	2200
16	11	Ø6.30	200	2200	2200
17	11	Ø6.30	180	1980	1980
17	11	Ø6.30	180	1980	1980
18	10	Ø6.30	200	2000	2000
18	11	Ø6.30	177	1947	1947
19	11	Ø6.30	177	1947	1947
19	11	Ø6.30	177	1947	1947
19	11	Ø6.30	177	1947	1947
20	4	Ø6.30	120	480	480

RESUMO DO AÇO

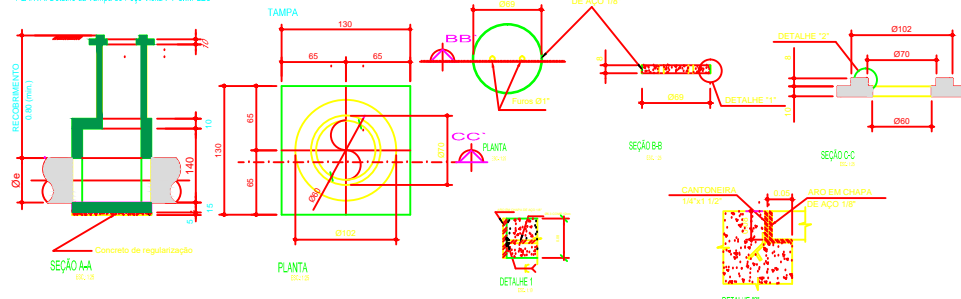
BITOLA	COMP.UNIT	TOTAL	Comp
6.3	57380	144	68
Ø	16852	68	

ACO CA-50 Peso Total = 220  
Peso Total +10% = 242

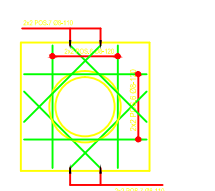
fck do Concreto = 15000 kgf/cm<sup>2</sup>



PLANTA: Detalhe da Tampa do Poço Visita-PV-SIMPLES



LAZO DE APOIO DA TAMPA



REFORÇO (ver nota 7)

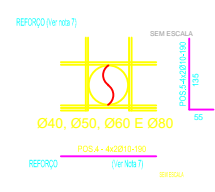


TABELA DE AÇO PARA A POSICIONAMENTO DA TAMPA

POSICAO	QUANTIDADE	BITOLA	COMP.UNIT	COMP.TOTAL	Comp
1	1	Ø6.30	120	120	1200
2	12	Ø6.30	196	2352	2352
3	9	Ø6.30	171	1539	1539
3	9	Ø6.30	171	1539	1539
4	11	Ø6.30	171	1881	1881
5	10	Ø6.30	246	2460	2460
6	12	Ø6.30	206	2472	2472
7	9	Ø6.30	246	2214	2214
8	11	Ø6.30	206	2266	2266
9	9	Ø6.30	186	1674	1674
9	9	Ø6.30	186	1674	1674
10	11	Ø6.30	186	2046	2046
11	10	Ø6.30	186	1860	1860
11	10	Ø6.30	186	1860	1860
11	10	Ø6.30	240	2400	2400
12	11	Ø6.30	240	2640	2640
13	14	Ø6.30	180	2520	2520
13	14	Ø6.30	180	2520	2520
14	10	Ø6.30	240	2400	2400
14	10	Ø6.30	240	2400	2400
15	13	Ø6.30	180	2340	2340
15	13	Ø6.30	180	2340	2340
16	11	Ø6.30	200	2200	2200
16	11	Ø6.30	200	2200	2200
17	11	Ø6.30	180	1980	1980
17	11	Ø6.30	180	1980	1980
18	10	Ø6.30	200	2000	2000
18	11	Ø6.30	177	1947	1947
19	11	Ø6.30	177	1947	1947
19	11	Ø6.30	177	1947	1947
19	11	Ø6.30	177	1947	1947
20	4	Ø6.30	120	480	480

**PROJETO DE INFRAESTRUTURA URBANA**  
**VIAS DE LIGAÇÃO DA PA**  
**SISTEMA DE DRENAGEM DE ÁGUA PLUVIAL**  
**DISPOSITIVO DE DRENAGEM PVBL**

Projeto de Drenagem Superficial PVBL  
 VIAS DE LIGAÇÃO DA PA

O4/04