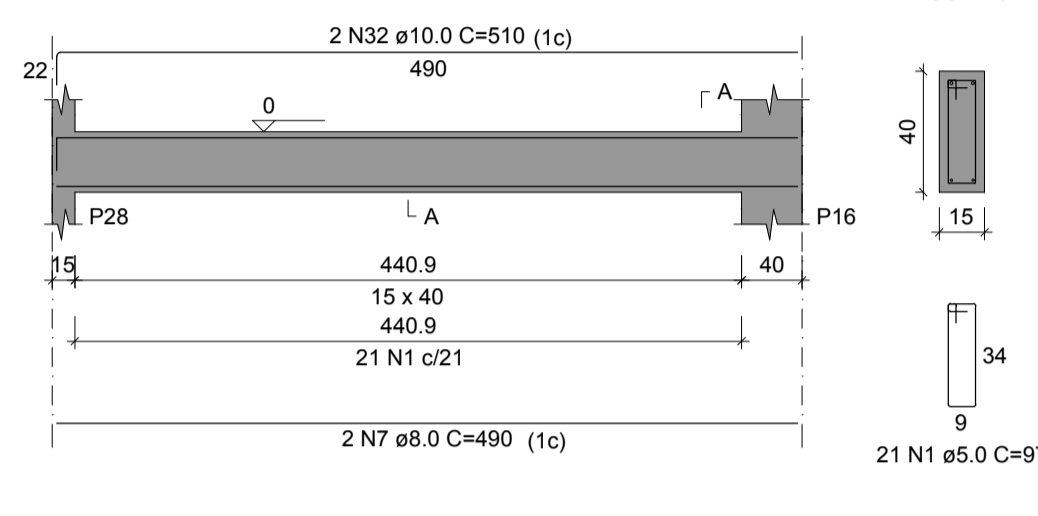
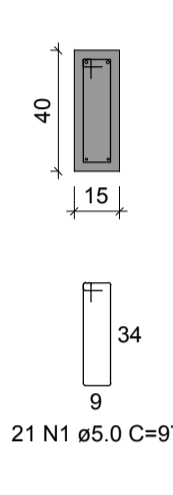


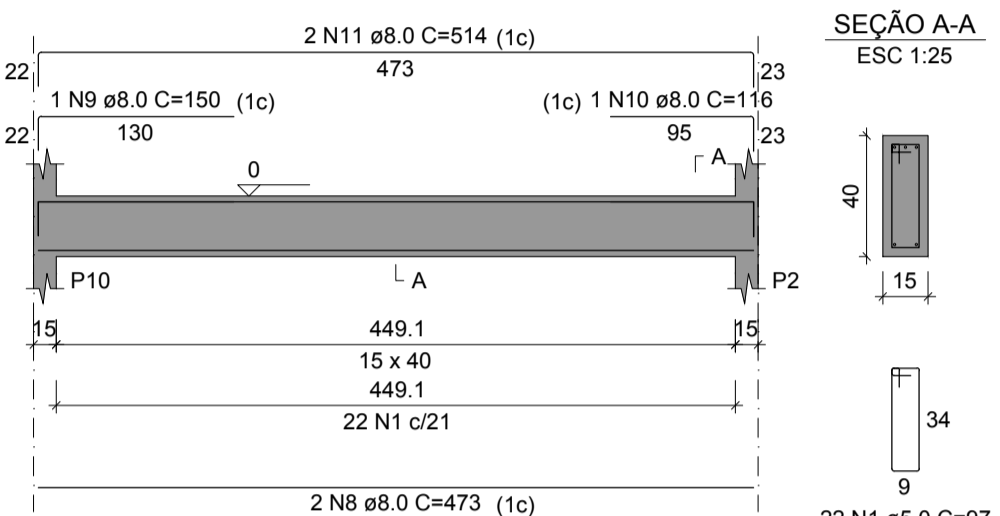
V16
ESC 1:50



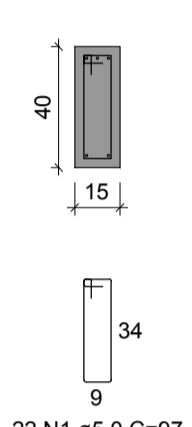
SEÇÃO A-A
ESC 1:25



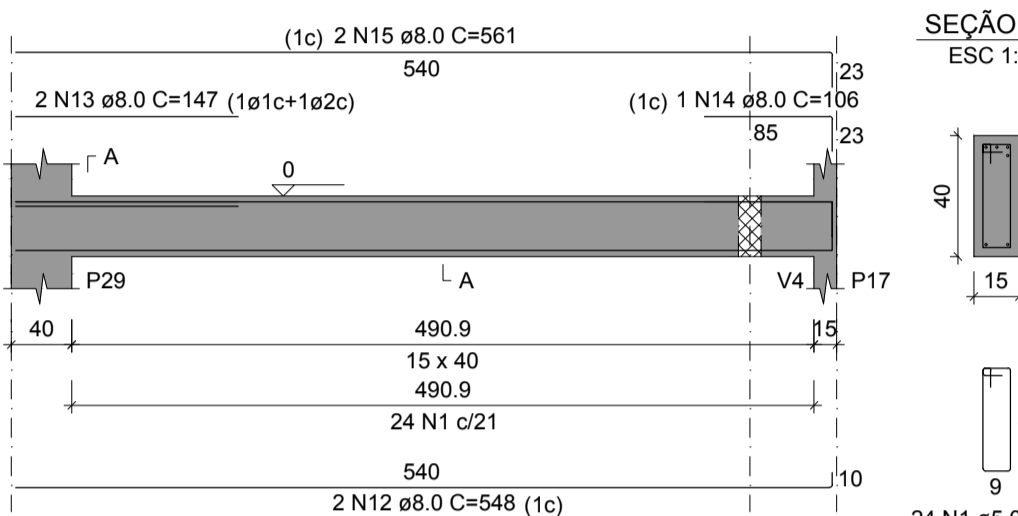
V17
ESC 1:50



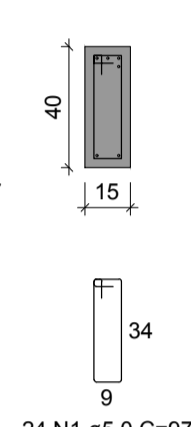
SEÇÃO A-A
ESC 1:25



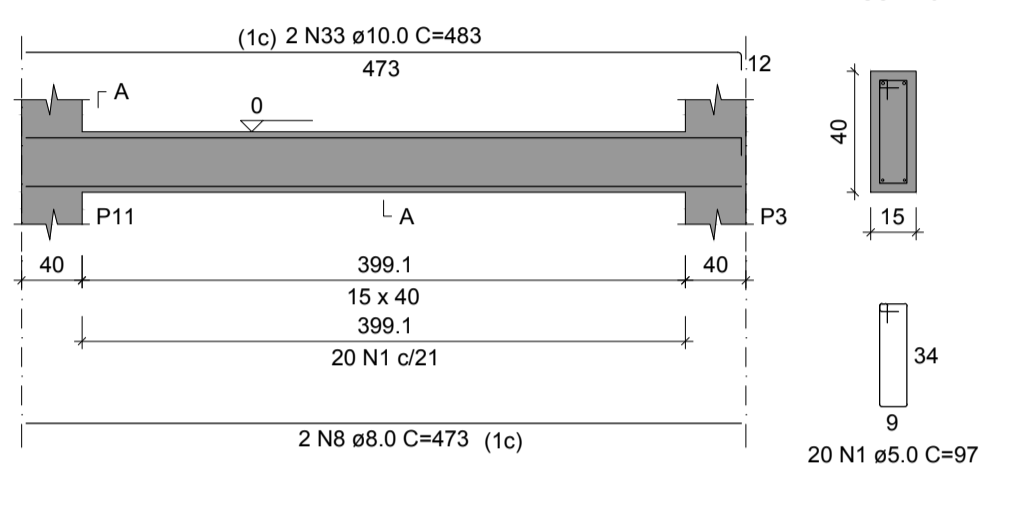
V18
ESC 1:50



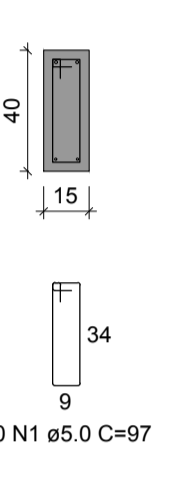
SEÇÃO A-A
ESC 1:25



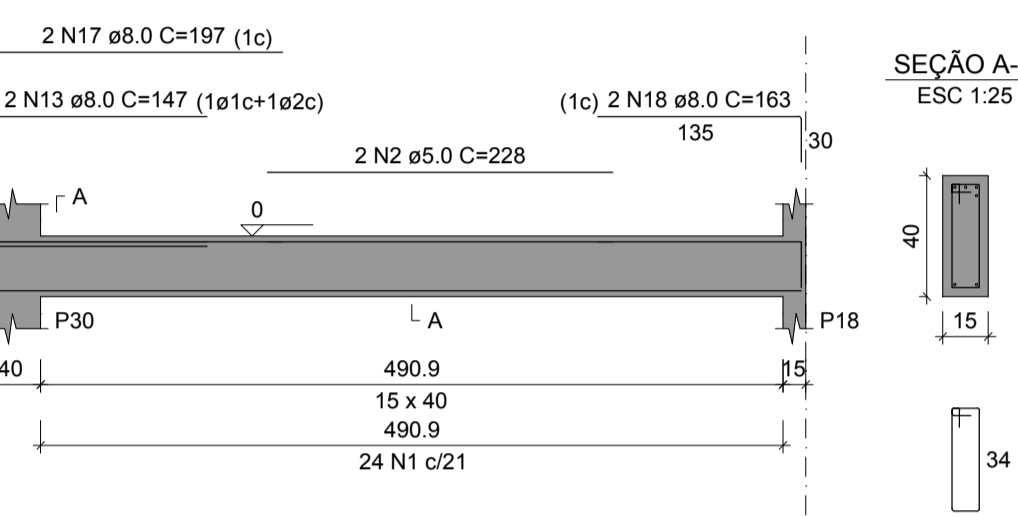
V19
ESC 1:50



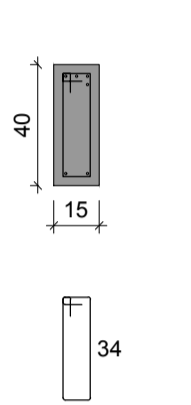
SEÇÃO A-A
ESC 1:25



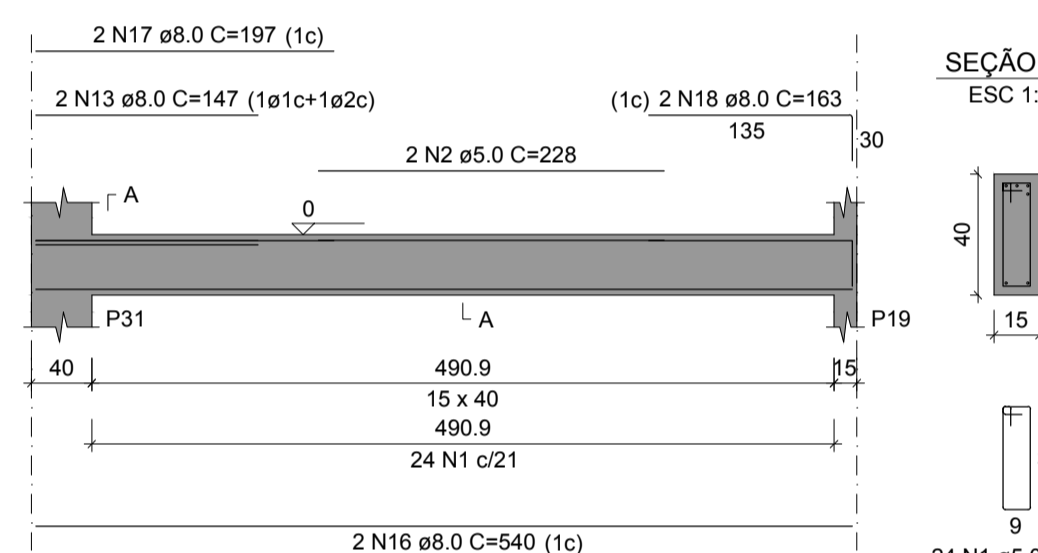
V20
ESC 1:50



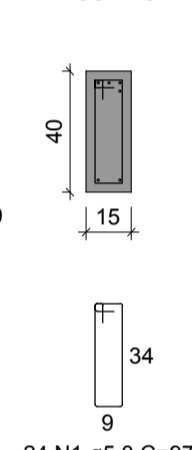
SEÇÃO A-A
ESC 1:25



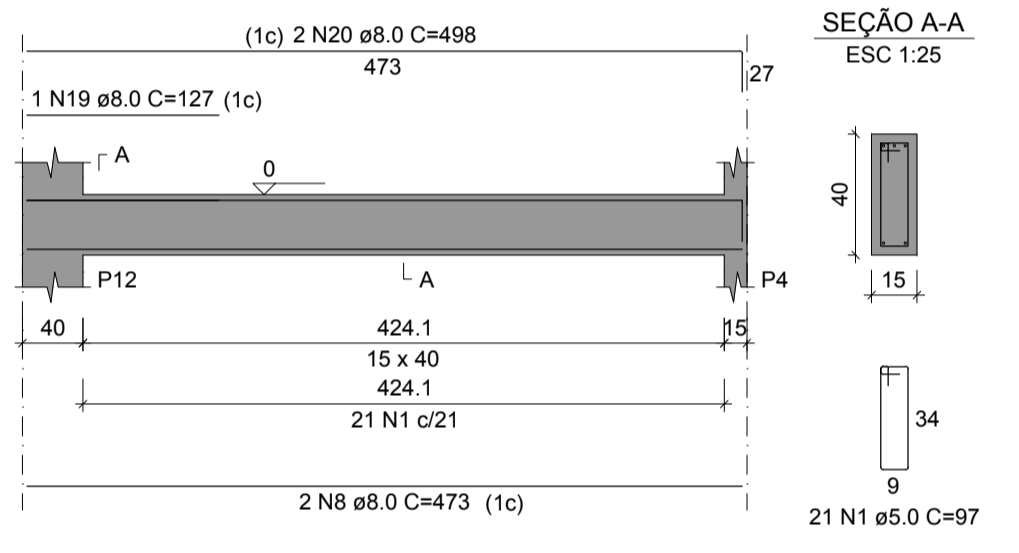
V21
ESC 1:50



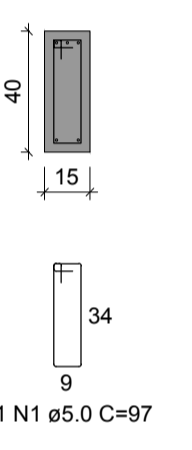
SEÇÃO A-A
ESC 1:25



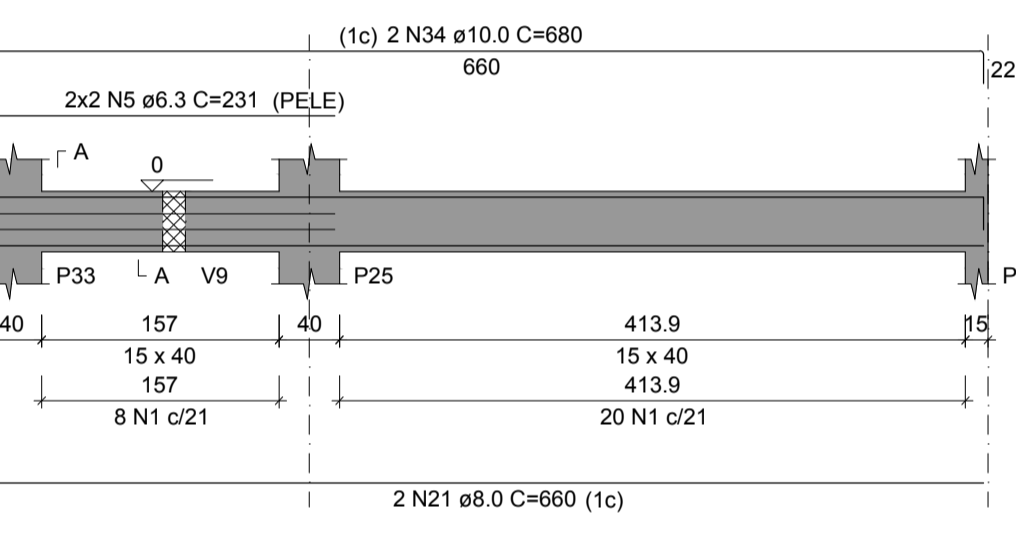
V22
ESC 1:50



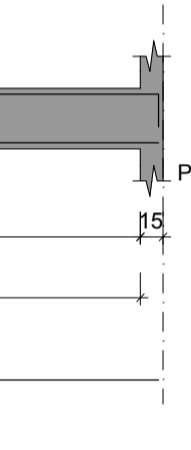
SEÇÃO A-A
ESC 1:25



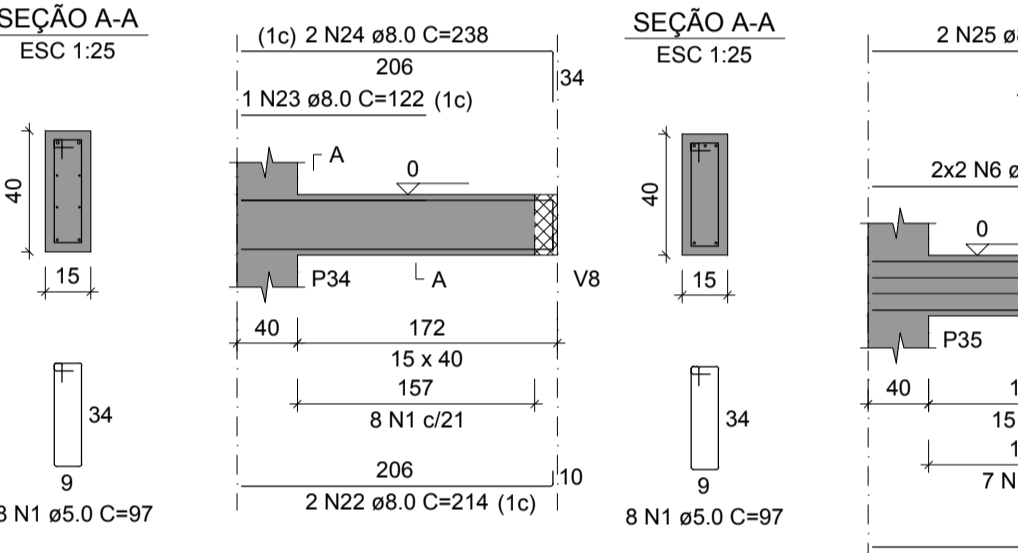
V23
ESC 1:50



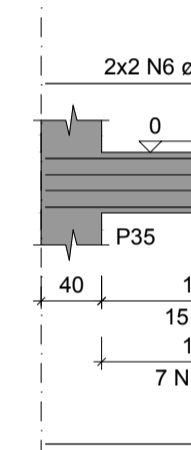
SEÇÃO A-A
ESC 1:25



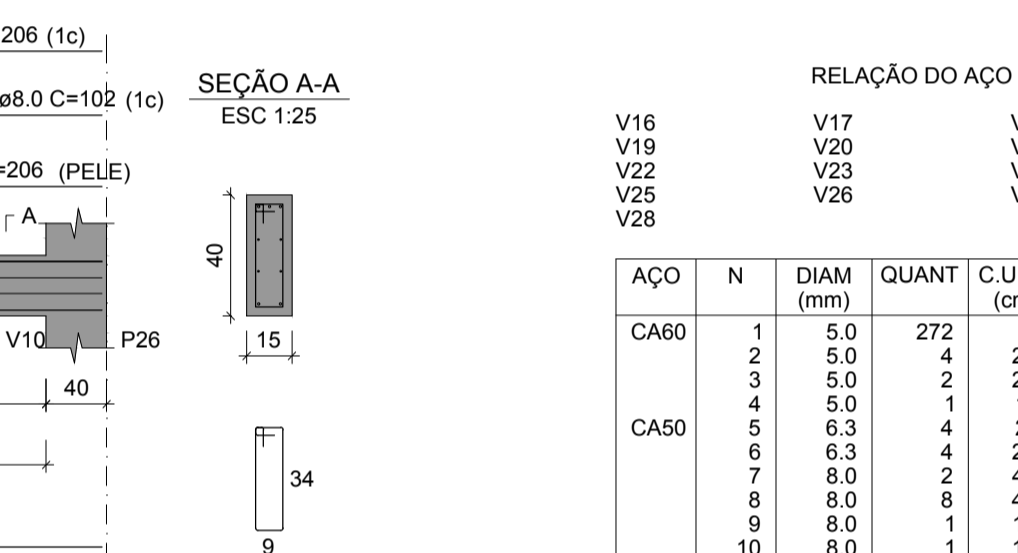
V24
ESC 1:50



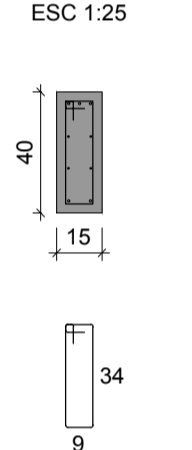
SEÇÃO A-A
ESC 1:25



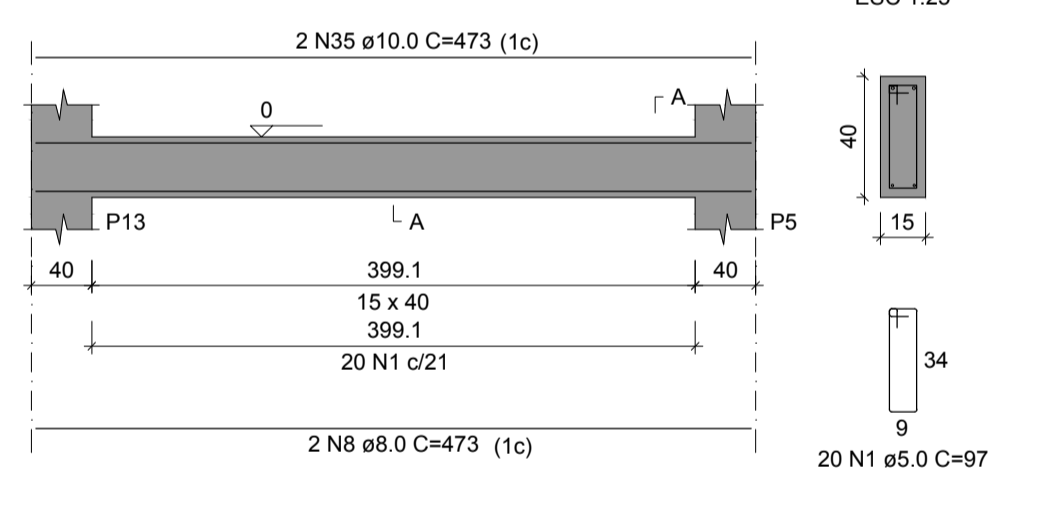
V25
ESC 1:50



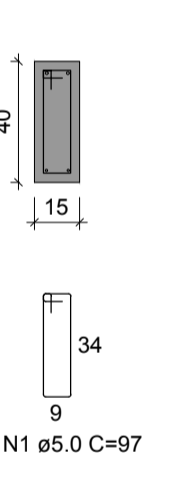
SEÇÃO A-A
ESC 1:25



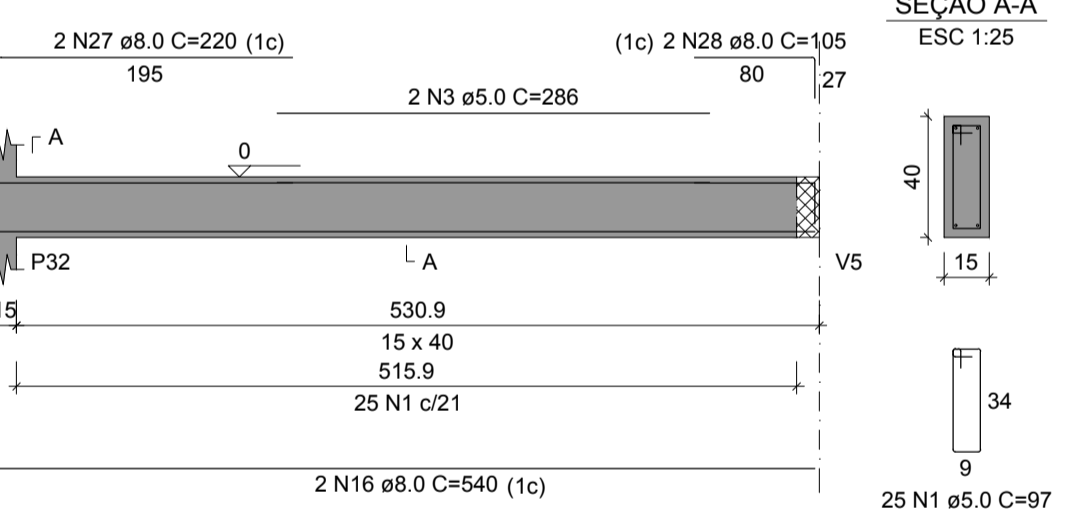
V26
ESC 1:50



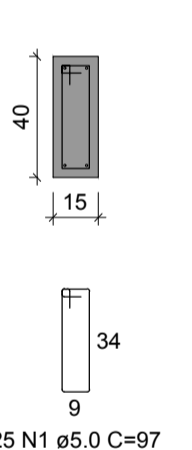
SEÇÃO A-A
ESC 1:25



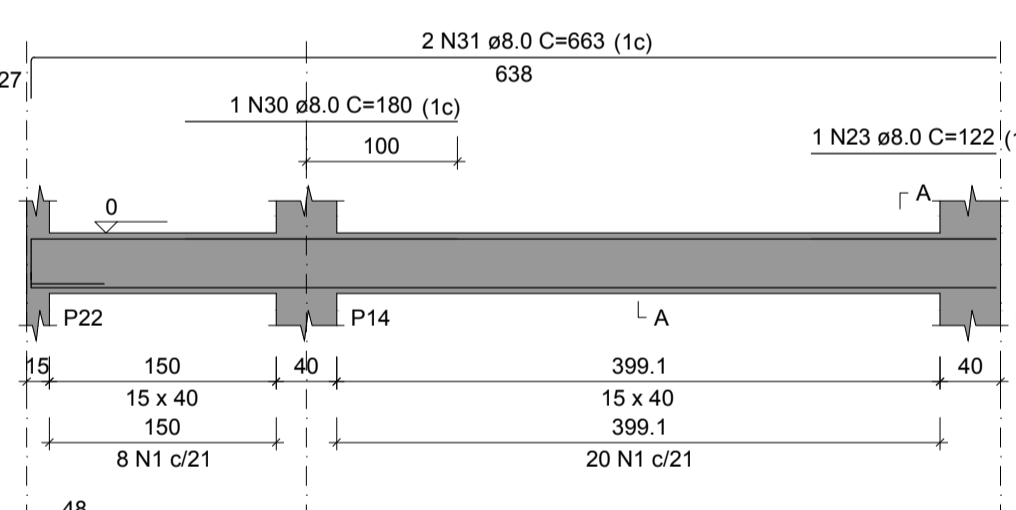
V27
ESC 1:50



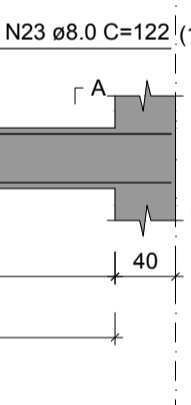
SEÇÃO A-A
ESC 1:25



V28
ESC 1:50



SEÇÃO A-A
ESC 1:25



RELAÇÃO DO AÇO

AÇO	N	DIAM (mm)	QUANT	C.UNIT (cm)	C.TOTAL (cm)
CA60	1	5.0	272	97	26384
	2	5.0	4	228	912
	3	5.0	2	286	572
	4	5.0	1	101	101
	5	6.3	4	231	924
	6	6.3	4	206	824
	7	8.0	2	490	980
	8	8.0	8	473	3784
	9	8.0	1	150	150
	10	8.0	1	116	116
	11	8.0	2	514	1028
	12	8.0	2	548	1096
	13	8.0	6	147	882
	14	8.0	1	106	106
	15	8.0	2	581	1122
	16	8.0	6	540	3240
	17	8.0	4	197	788
	18	8.0	4	163	652
	19	8.0	1	127	127
	20	8.0	2	498	996
	21	8.0	2	660	1320
	22	8.0	2	214	428
	23	8.0	2	122	244
	24	8.0	2	238	476
	25	8.0	4	206	824
	26	8.0	1	102	102
	27	8.0	2	220	440
	28	8.0	2	105	210
	29	8.0	2	646	1292
	30	8.0	1	180	180
	31	8.0	2	663	1326
	32	10.0	2	510	1020
	33	10.0	2	483	966
	34	10.0	2	680	1360
	35	10.0	2	473	946

RESUMO DO AÇO

AÇO	DIAM (mm)	C. TOTAL (m)	PESO + 10% (kg)
CA50	6.3	17.5	4.7
	8.0	219.1	95.1
	10.0	42.9	28.1
CA60	5.0	279.7	47.4
PESO TOTAL (kg)			
CA50			128.9
CA60			47.4

Volume de concreto (C-25) = 3.32 m³
Área de forma = 60.13 m²

PROJETO ESTRUTURAL:
ENG. FÁBIO FURTADO
CREA 1519146/094 PA
EXECUÇÃO:
RESP. TÉCNICO:
CONSTRUÇÃO:
PROPRIETÁRIO:

SECRETARIA MUNICIPAL DE SAÚDE
Obra: **CEO _ CENTRO DE ESPECIALIDADES ODONTOLÓGICAS _ ÁGUAS LINDAS**
End.: Tv. Antônio Lemos, s/nº Águas Lindas - Ananindeua PA.

ANANINDEUA É TRABALHO

Equipe Técnica: Departamento de Projetos
Área do Terreno: 772,53 m²
Área Total: 336,71 m²
CAD: ENG. FÁBIO FURTADO

Data: AGO./2023
Escala: Indicada
Execução: Agosto_2023

Conteúdo: PROJETO ESTRUTURAL - VIGAS FUNDAÇÃO
Secretária:

PMA

PRANCHA 10