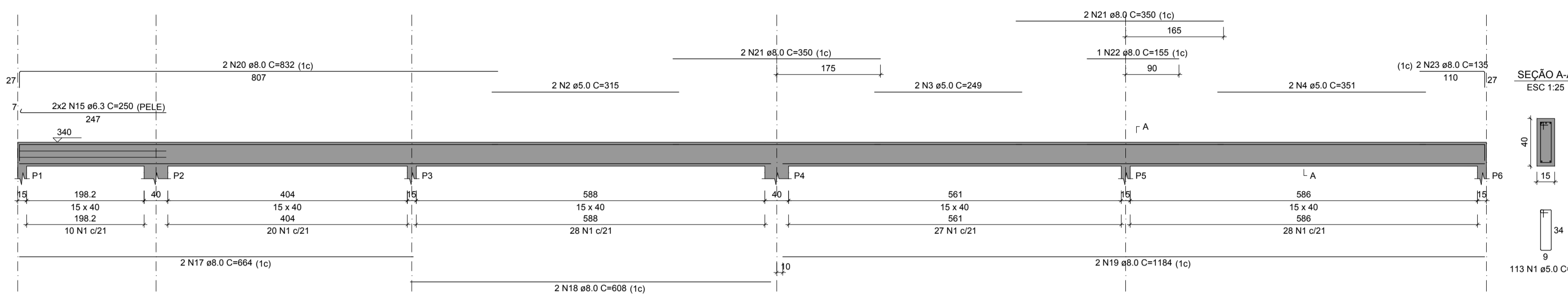
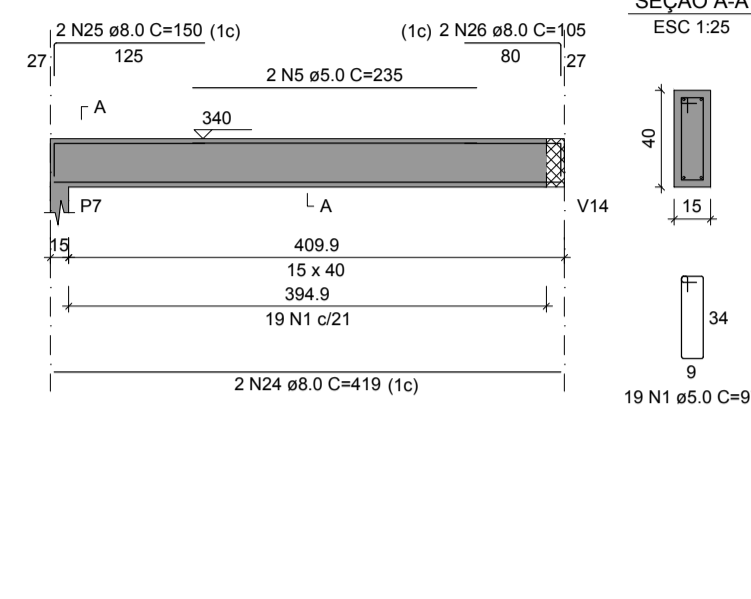


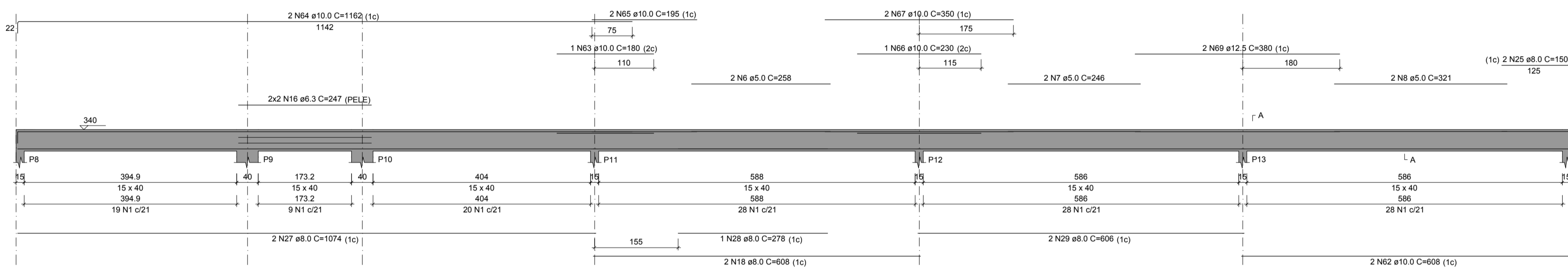
V1
ESC 1:50



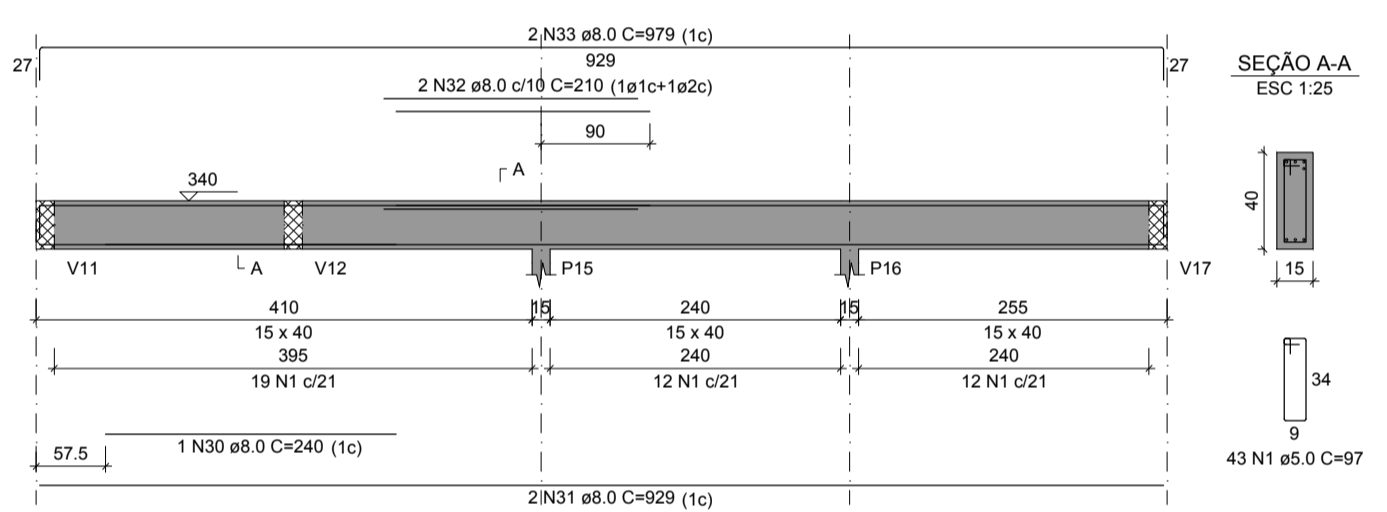
V2
ESC 1:50



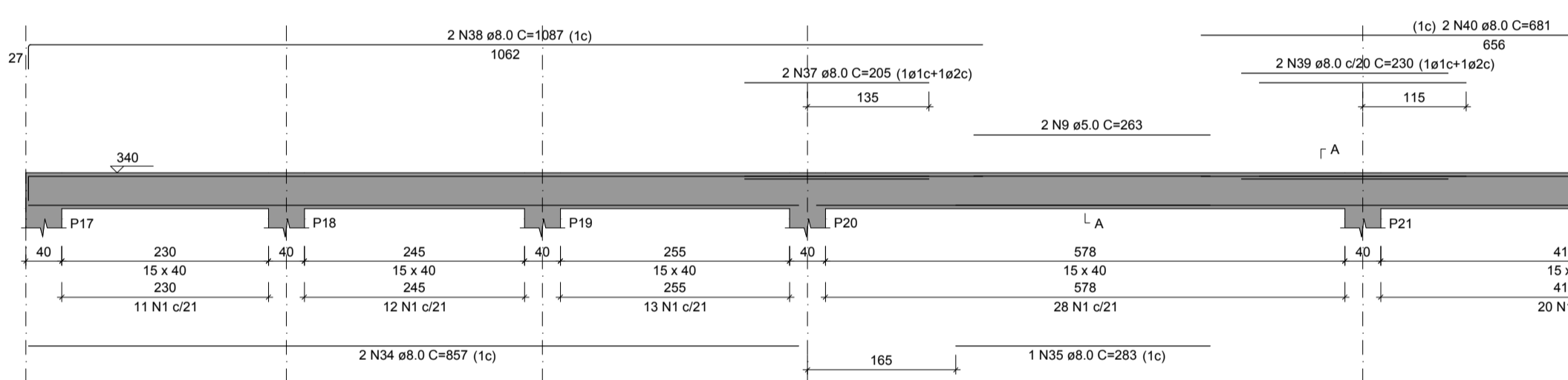
V3
ESC 1:50



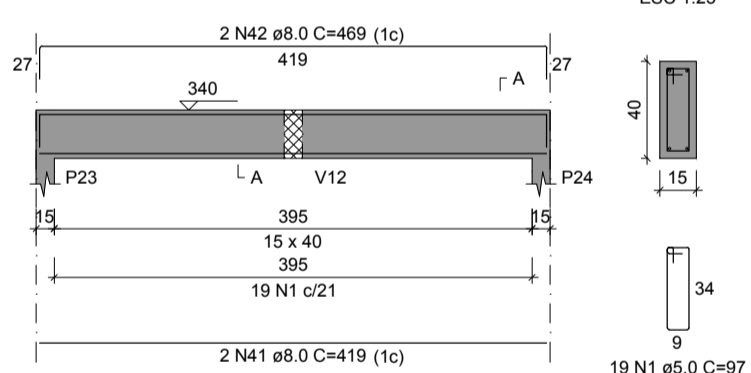
V4
ESC 1:50



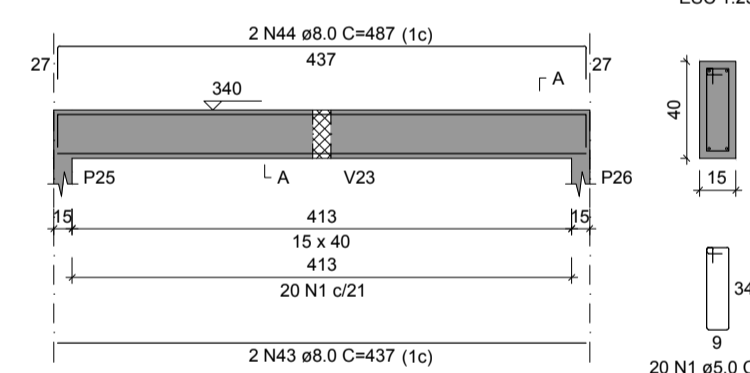
V5
ESC 1:50



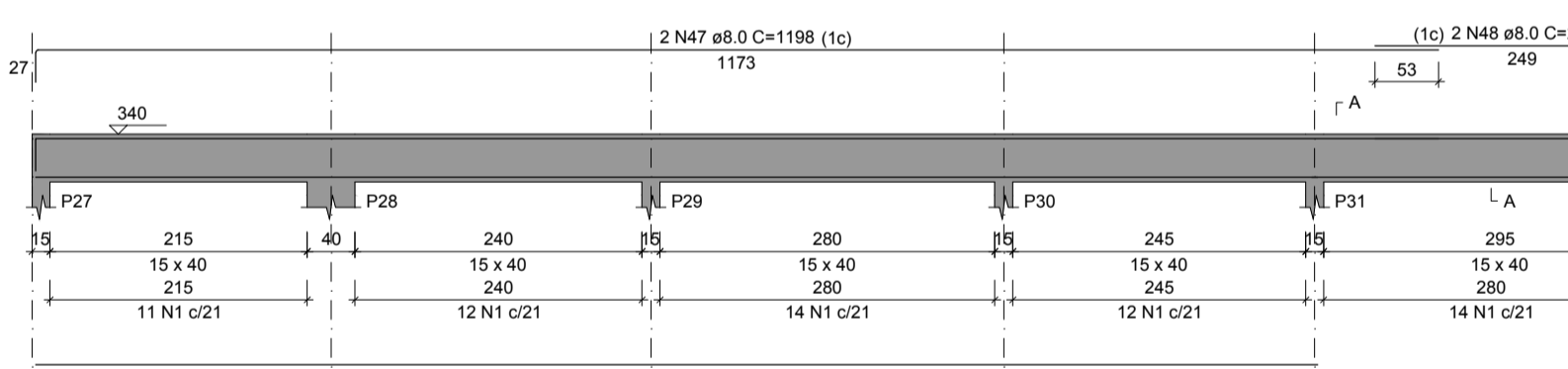
V6
ESC 1:50



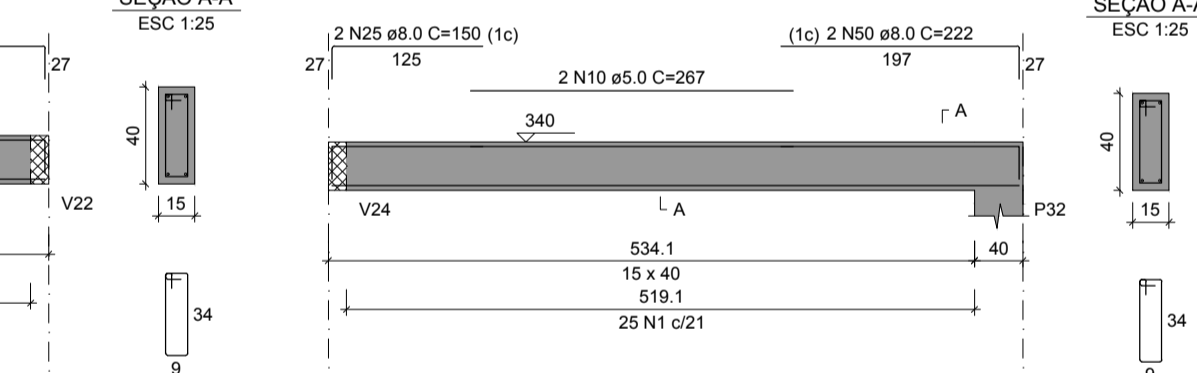
V7
ESC 1:50



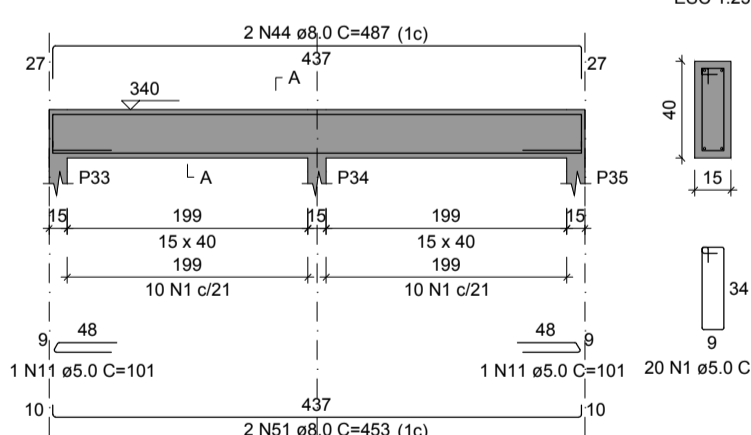
V8
ESC 1:50



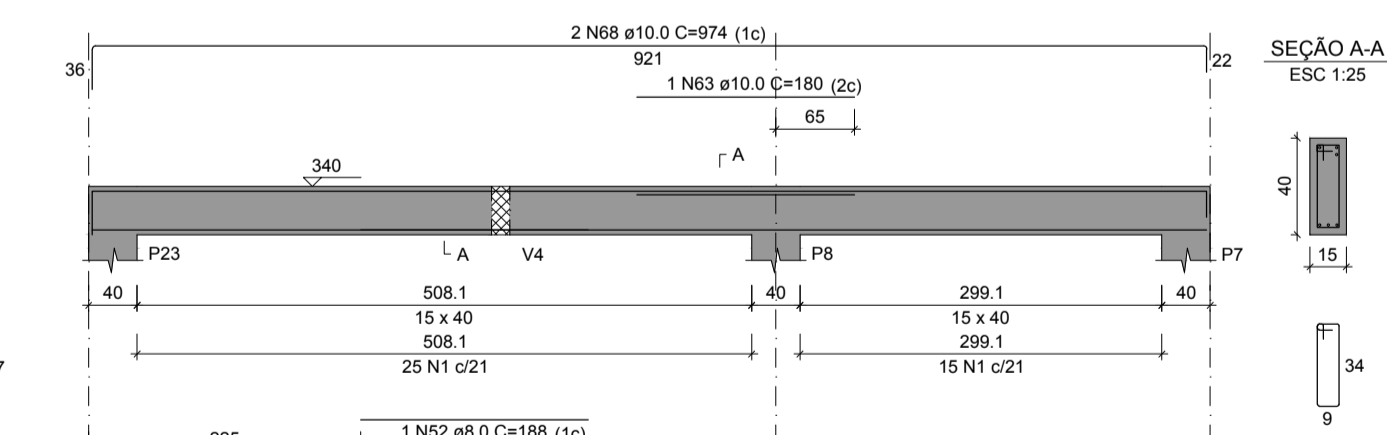
V9
ESC 1:50



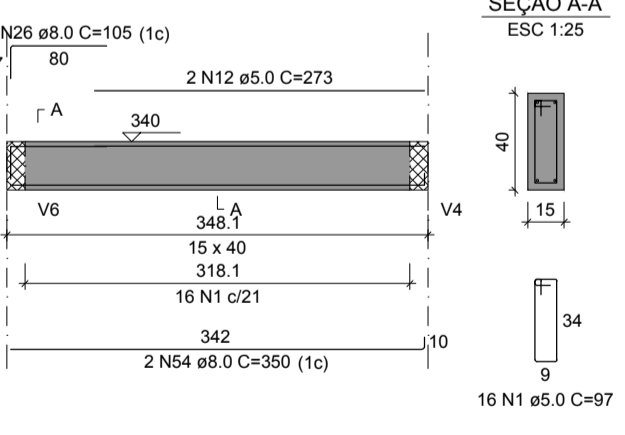
V10
ESC 1:50



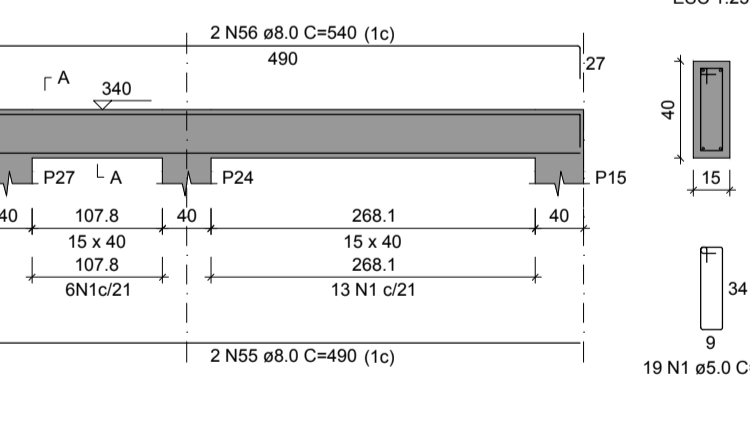
V11
ESC 1:50



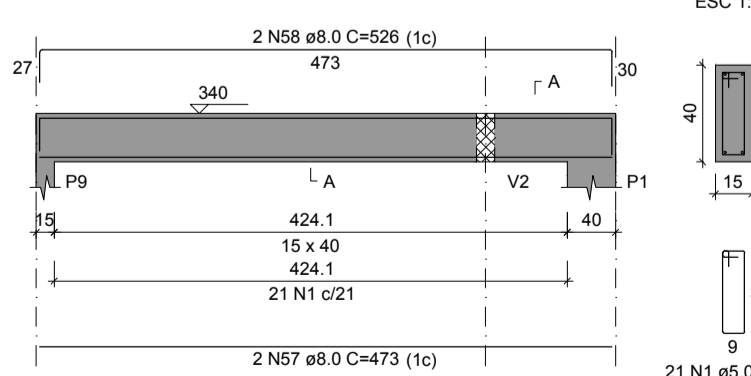
V12
ESC 1:50



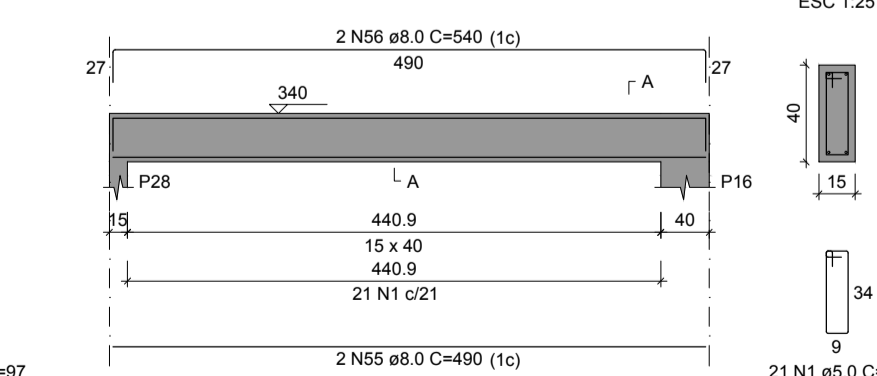
V13
ESC 1:50



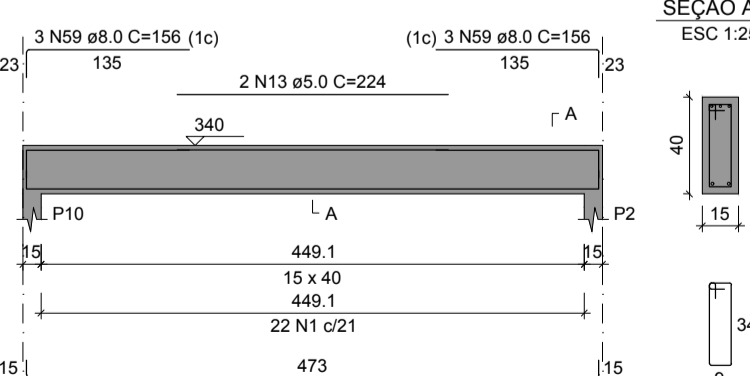
V14
ESC 1:50



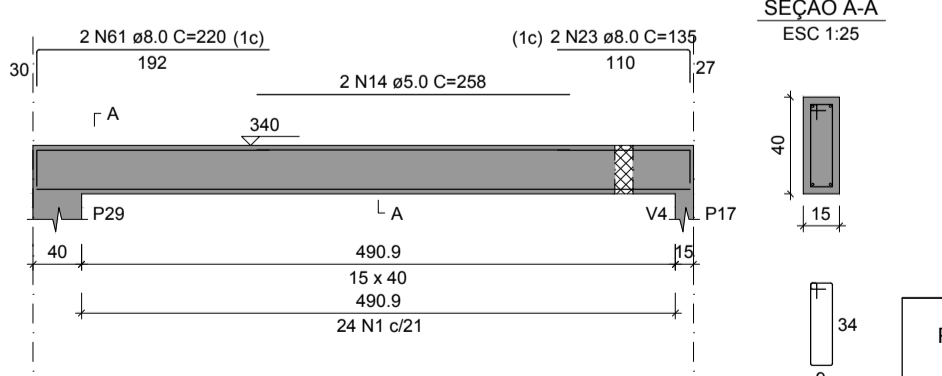
V15
ESC 1:50



V16
ESC 1:50



V17
ESC 1:50



RELAÇÃO DO AÇO

AÇO	N	DIAM (mm)	QUANT	C UNIT (cm)	C TOTAL (cm)
CA60	1	5.0	701	97	67997
	2	5.0	2	515	830
	3	5.0	2	249	498
	4	5.0	2	351	702
	5	5.0	2	235	470
	6	5.0	2	258	516
	7	5.0	2	246	492
	8	5.0	2	321	642
	9	5.0	2	263	526
	10	5.0	2	287	574
	11	5.0	2	101	202
	12	5.0	2	273	546
	13	5.0	2	224	448
	14	6.3	2	296	592
	15	6.3	4	250	1000
	16	6.3	4	247	988
	17	8.0	2	664	1328
	18	8.0	2	608	1216
	19	8.0	2	1184	2368
	20	8.0	2	832	1664
	21	8.0	4	350	1400
	22	8.0	1	155	155
	23	8.0	4	135	540
	24	8.0	2	419	838
	25	8.0	6	150	900
	26	8.0	2	105	420
	27	8.0	1	1074	2148
	28	8.0	1	278	278
	29	8.0	2	606	1212
	30	8.0	2	240	480
	31	8.0	2	929	1858
	32	8.0	2	210	420
	33	8.0	2	979	1958
	34	8.0	2	857	1714
	35	8.0	1	283	283
	36	8.0	2	1084	2168
	37	8.0	2	205	410
	38	8.0	2	1087	2174
	39	8.0	2	230	460
	40	8.0	2	681	1362
	41	8.0	2	419	838
	42	8.0	2	469	938
	43	8.0	2	437	874
	44	8.0	4	467	1868
	45	8.0	2	1072	2144
	46	8.0	2	302	604
	47	8.0	2	1198	2396
	48	8.0	2	274	548
	49	8.0	2	568	1136
	50	8.0	2	222	444
	51	8.0	2	422	844
	52	8.0	1	188	188
	53	8.0	2	921	1842
	54	8.0	2	350	700
	55	8.0	2	490	980
	56	8.0	4	540	2160
	57	8.0	2	473	946
	58	8.0	2	526	1052
	59	8.0	6	156	936
	60	8.0	2	540	1080
	61	8.0	2	220	440
	62	10.0	2	608	1216
	63	10.0	2	180	360
	64	10.0	2	1162	2324
	65	10.0	2	195	390
	66	10.0	1	230	230
	67	10.0	2	350	700
	68	10.0	2	974	1948
	69	12.5	2	380	760
	70	12.5	2	497	994

RESUMO DO AÇO

AÇO	DIAM (mm)	C TOTAL (m)	PESO + 10% (kg)
CA50	6.3	19.9	5.4
	8.0	528.1	228.2
	10.0	71.7	48.6
	12.5	17.5	18.6
CA60	5.0	747.2	128.7
PESO TOTAL (kg)			
CA50		301.8	
CA60		128.7	

Volume de concreto (C-25) = 8.65 m³
Área de forma = 149.37 m²

PROJETO ESTRUTURAL:
ENG. FÁBIO FURTADO
CREA 1519146094 PA
EXECUÇÃO:
RESP. TÉCNICO:
CONSTRUÇÃO:
PROPRIETÁRIO:

SECRETARIA MUNICIPAL DE SAÚDE
Obra: **CEO _ CENTRO DE ESPECIALIDADES ODONTOLÓGICAS _ ÁGUAS LINDAS**
End.: Tv. Antônio Lemos, s/nº Águas Lindas - Ananindeua PA.

ANANINDEUA É TRABALHO

Equipe Técnica: Departamento de Projetos
Área do Terreno: 772,53 m²
Área Total: 336,71 m²
CAD: ENG. FÁBIO FURTADO

Data: AGO./2023
Escala: Indicada
Execução: Agosto_2023

Conteúdo: **PROJETO ESTRUTURAL - VIGAS TÉRREO**
Secretária: