

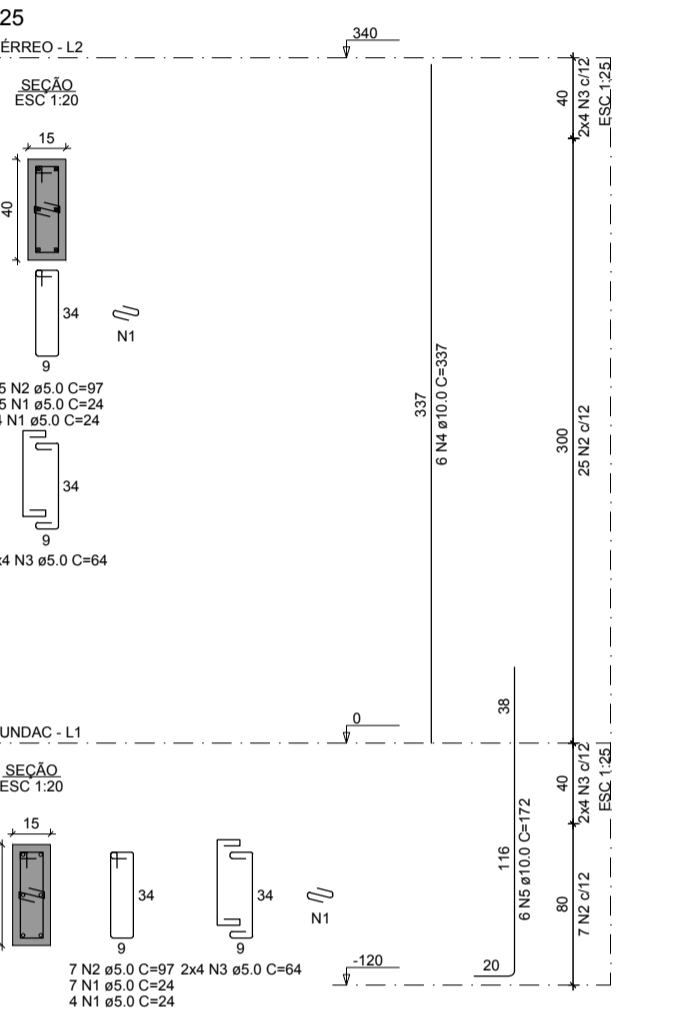
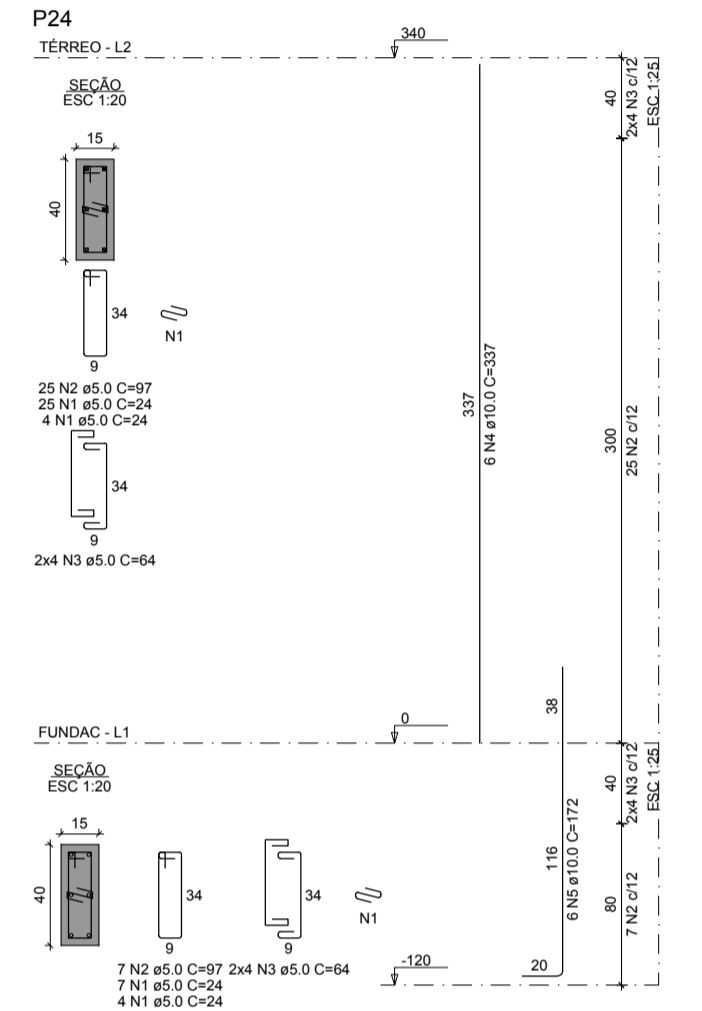
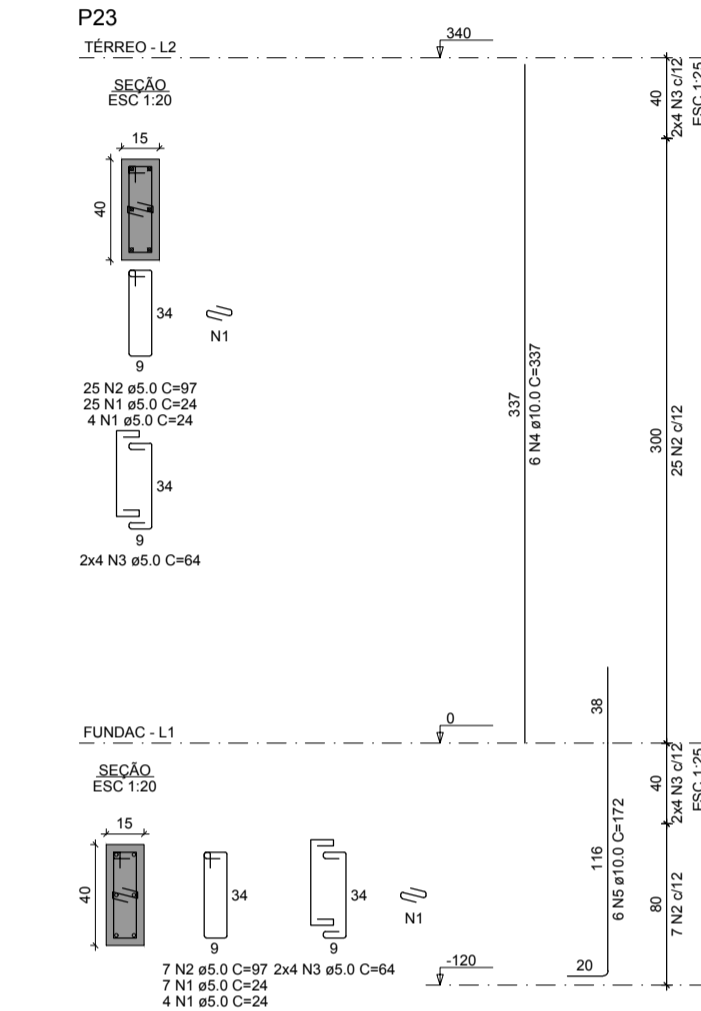
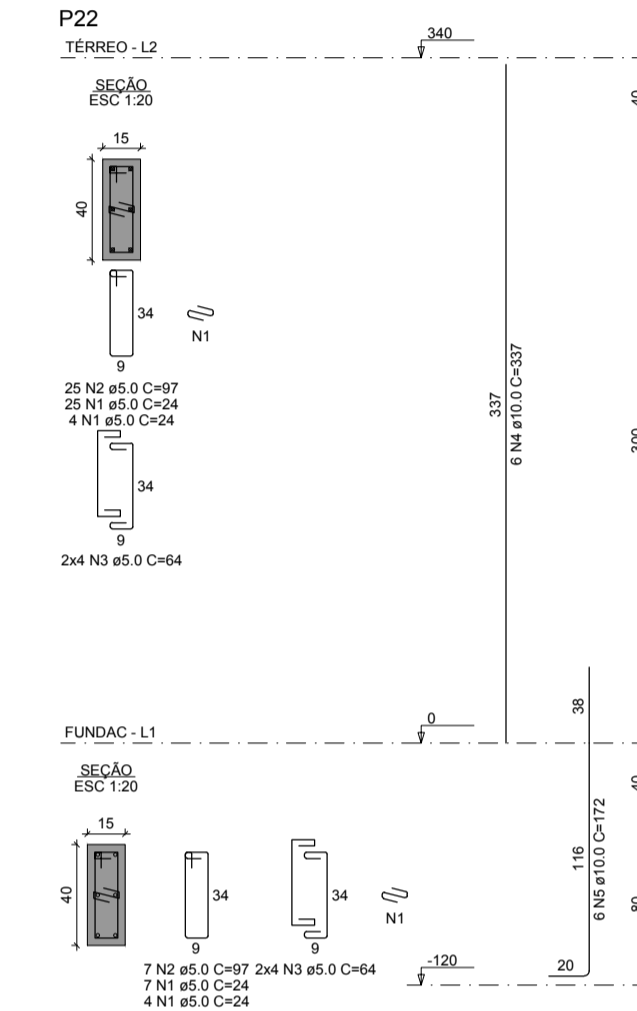
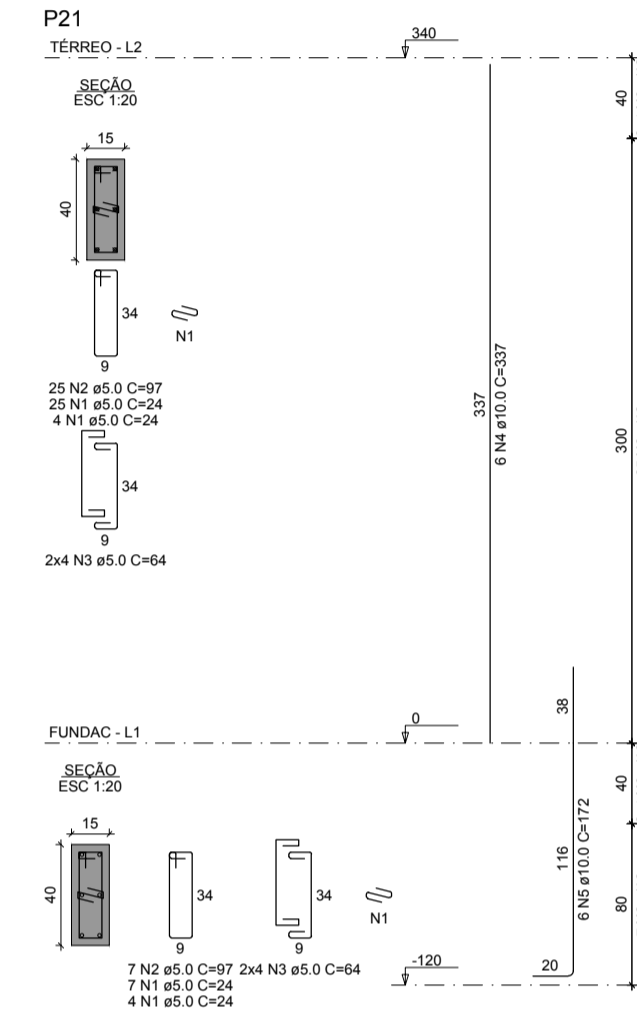
RELAÇÃO DO AÇO

AÇO	N	DIAM (mm)	QUANT	C UNIT (cm)	C TOTAL (cm)	PESO + 10% (kg)
CA60	1	5.0	240	24	5760	5760
CA60	2	5.0	192	97	18504	18504
CA60	3	5.0	80	64	5120	5120
CA60	4	10.0	36	37	1332	1332
CA60	5	10.0	30	172	5160	5160
CA60	6	10.0	6	75	450	450
CA60	7	10.0	6	130	780	780

RESUMO DO AÇO

AÇO	DIAM (mm)	C TOTAL (cm)	PESO + 10% (kg)
CA50	10.0	185.2	125.6
CA60	5.0	296	44.8

PESO TOTAL (kg): 170.4
Volume de concreto (C-25) = 1.26 m³
Área de forma = 25.30 m²



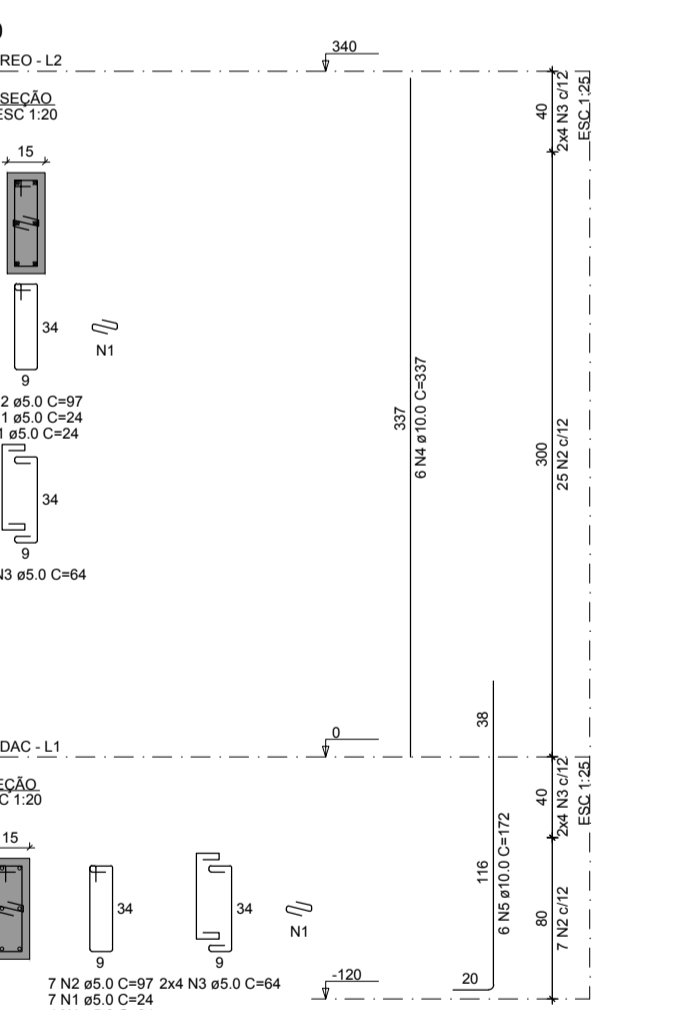
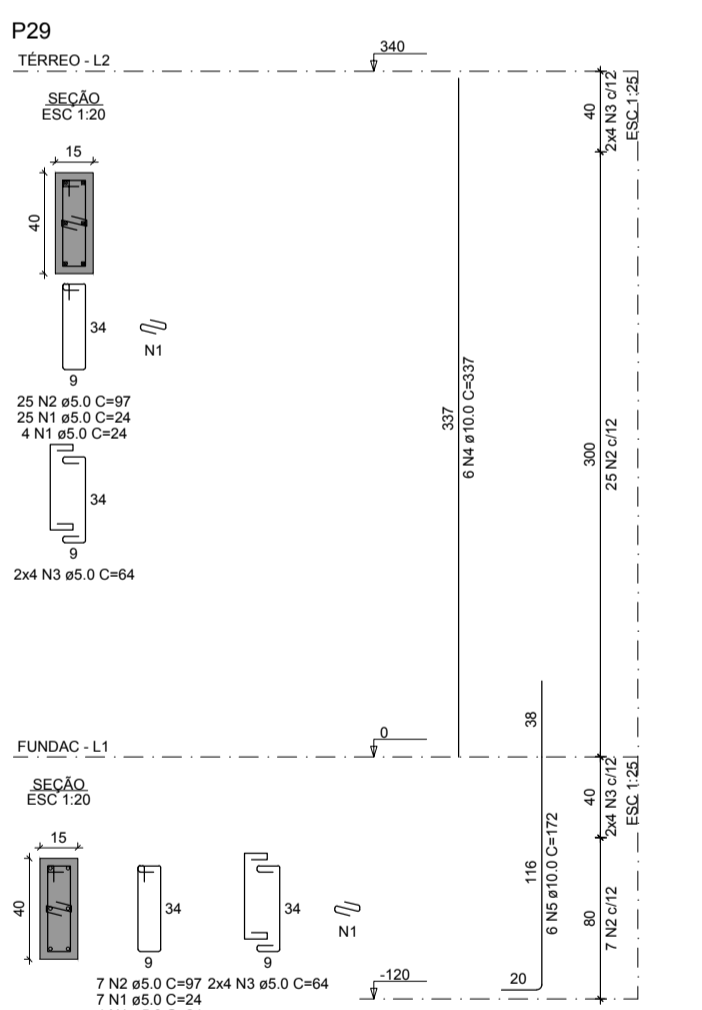
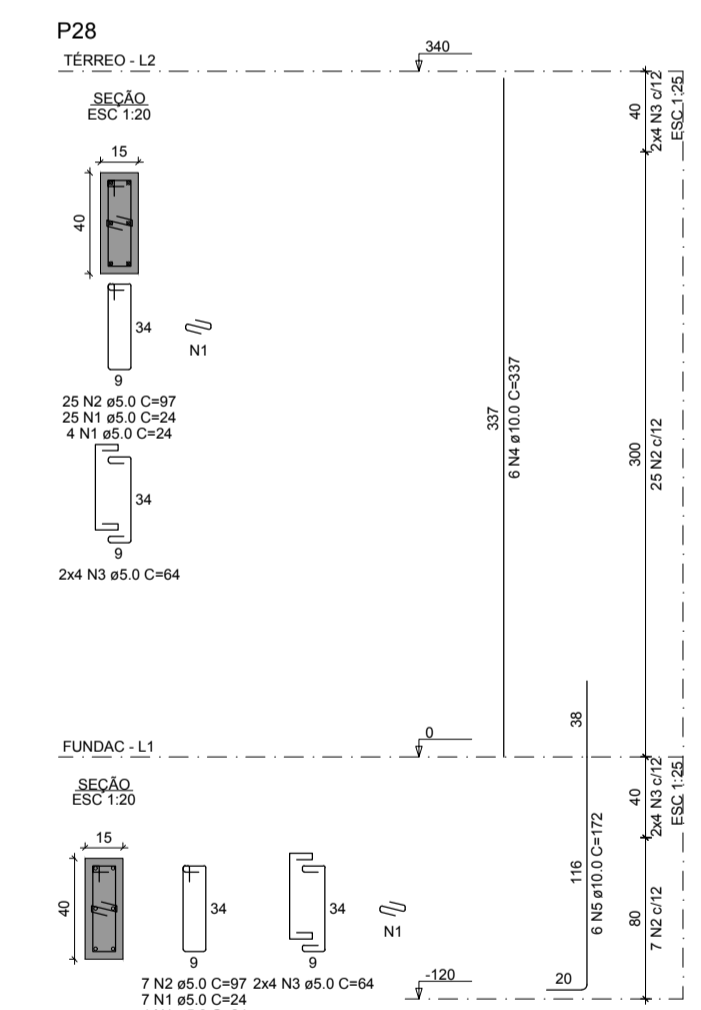
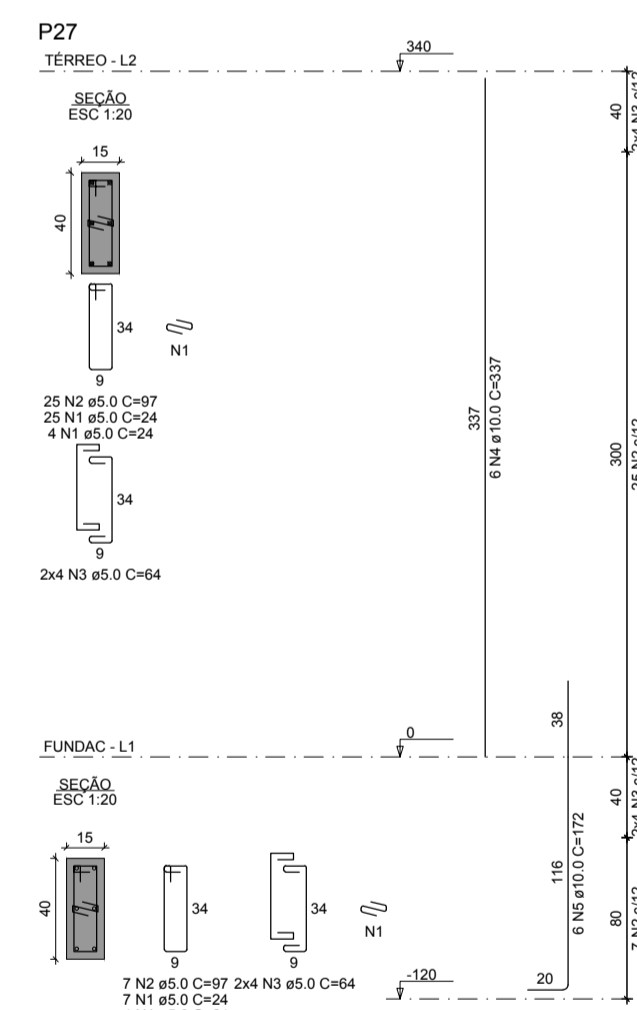
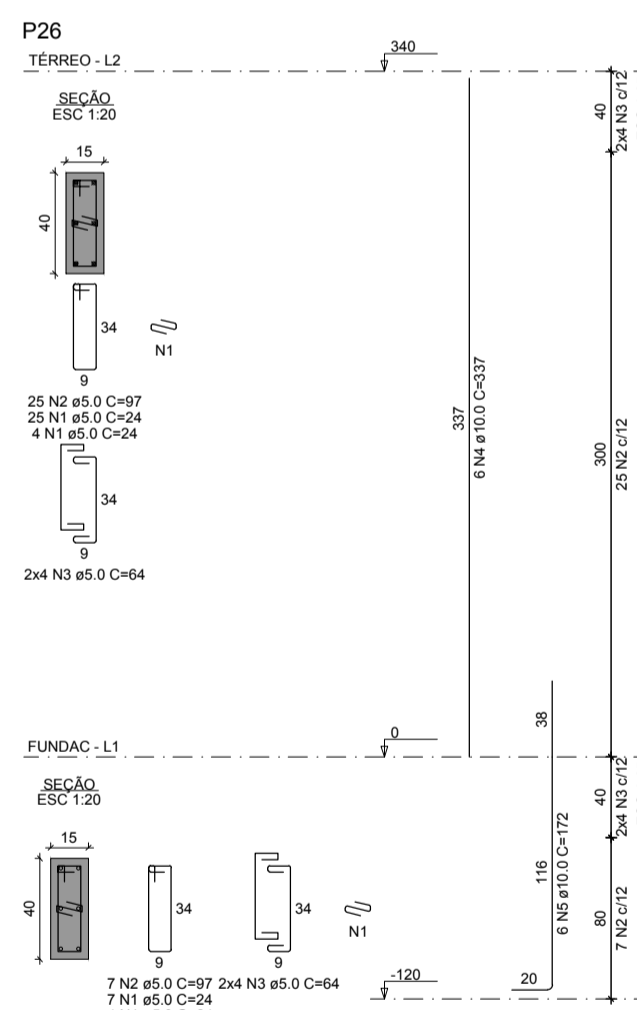
RELAÇÃO DO AÇO

AÇO	N	DIAM (mm)	QUANT	C UNIT (cm)	C TOTAL (cm)	PESO + 10% (kg)
CA60	1	5.0	200	24	4800	4800
CA60	2	5.0	192	97	18504	18504
CA60	3	5.0	80	64	5120	5120
CA60	4	10.0	36	37	1332	1332
CA60	5	10.0	30	172	5160	5160

RESUMO DO AÇO

AÇO	DIAM (mm)	C TOTAL (cm)	PESO + 10% (kg)
CA50	10.0	152.7	103.6
CA60	5.0	254.4	43.1

PESO TOTAL (kg): 146.7
Volume de concreto (C-25) = 1.26 m³
Área de forma = 25.30 m²



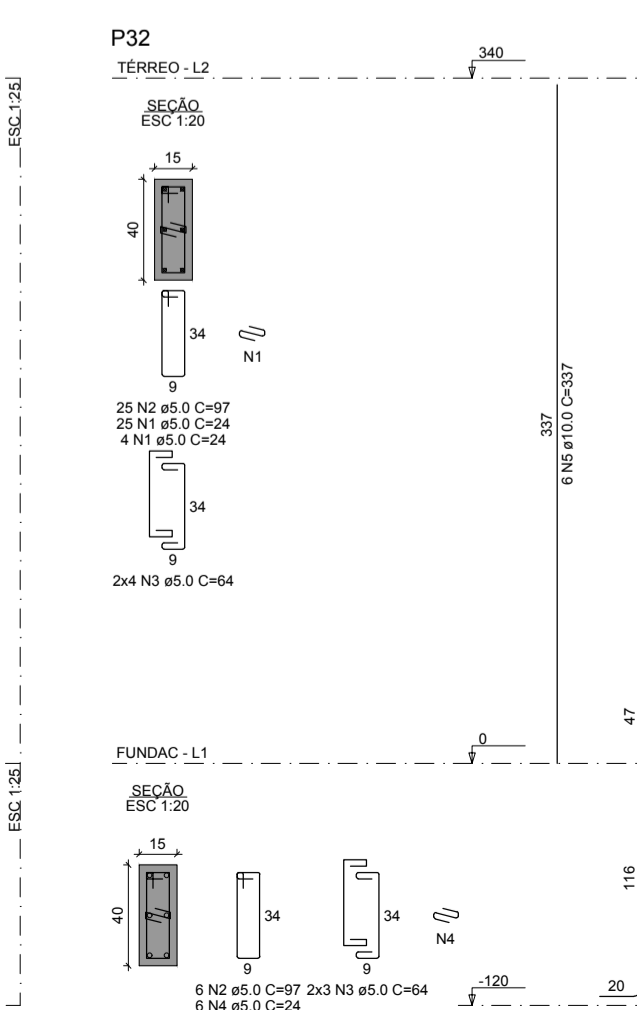
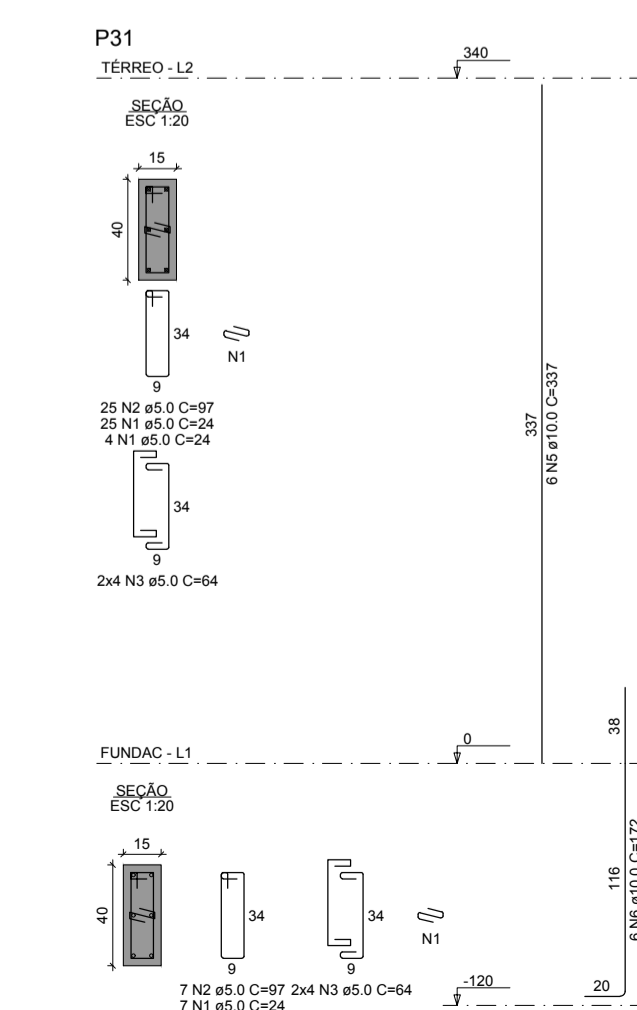
RELAÇÃO DO AÇO

AÇO	N	DIAM (mm)	QUANT	C UNIT (cm)	C TOTAL (cm)	PESO + 10% (kg)
CA60	1	5.0	200	24	4800	4800
CA60	2	5.0	192	97	18504	18504
CA60	3	5.0	80	64	5120	5120
CA60	4	10.0	36	37	1332	1332
CA60	5	10.0	30	172	5160	5160

RESUMO DO AÇO

AÇO	DIAM (mm)	C TOTAL (cm)	PESO + 10% (kg)
CA50	10.0	152.7	103.6
CA60	5.0	254.4	43.1

PESO TOTAL (kg): 146.7
Volume de concreto (C-25) = 1.26 m³
Área de forma = 25.30 m²



RELAÇÃO DO AÇO

AÇO	N	DIAM (mm)	QUANT	C UNIT (cm)	C TOTAL (cm)	PESO + 10% (kg)
CA60	1	5.0	69	24	1656	1656
CA60	2	5.0	30	83	2490	2490
CA60	3	5.0	30	64	1920	1920
CA60	4	10.0	12	37	444	444
CA60	5	10.0	6	75	450	450
CA60	6	10.0	6	180	1080	1080

RESUMO DO AÇO

AÇO	DIAM (mm)	C TOTAL (cm)	PESO + 10% (kg)
CA50	10.0	50.8	34.4
CA60	5.0	10.8	11.4

PESO TOTAL (kg): 45.8
Volume de concreto (C-25) = 0.50 m³
Área de forma = 10.12 m²

PROJETO ESTRUTURAL:
ENG. FÁBIO FURTADO
CREA 1519146694 PA
EXECUÇÃO:
RESP. TÉCNICO:
CONSTRUÇÃO:
PROPRIETÁRIO:

SECRETARIA MUNICIPAL DE SAÚDE
Obr.: UBS GRAJAU
End.: Tv. Rui Barbosa, S/º Bairro Icuí - Ananindeua Pará

ANANINDEUA
É TR A B A L H O

Equipe Técnica: Departamento de Projetos
Área Construída: 295,82 m²
Data: AGO /2023
Conteúdo: PROJETO ESTRUTURAL - DETALHE DOS PILARES
Área do Terreno: 587,00 m²
Escala: Indicada
Execução: Agosto_2023
Secretária:

ARQUITETURA
05
10