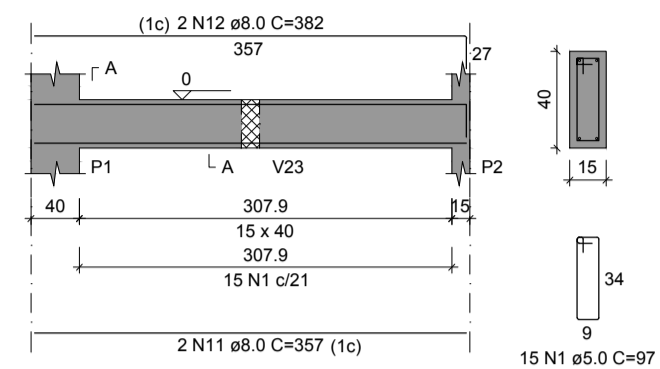
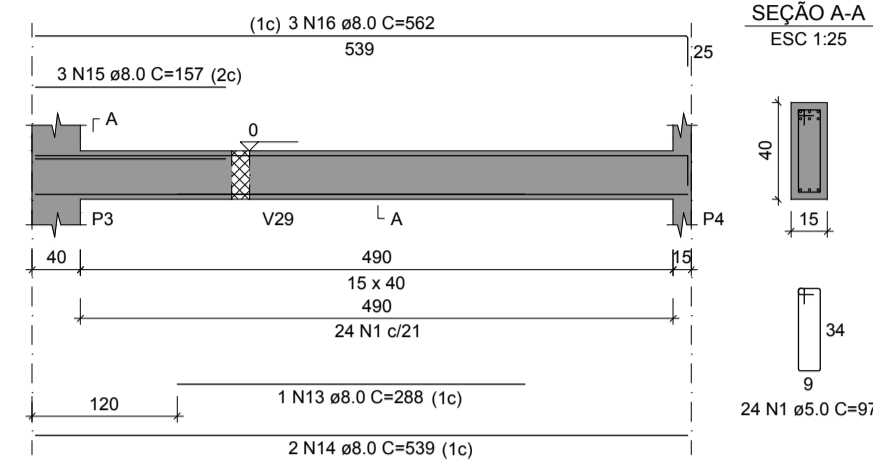


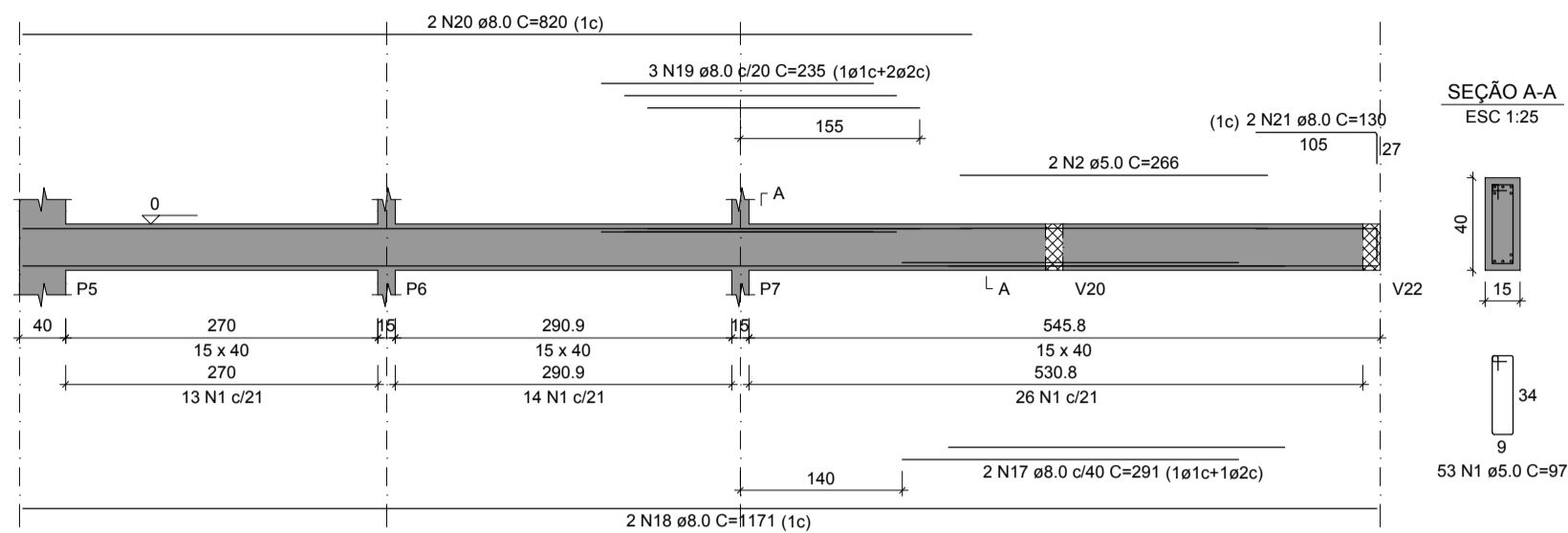
V1 ESC 1:50



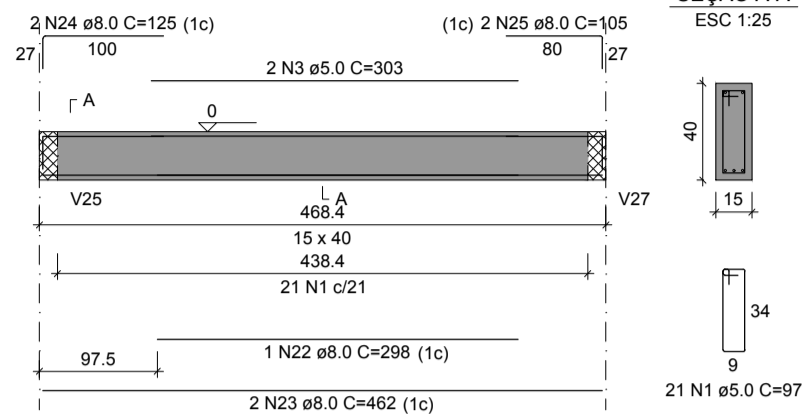
V2 ESC 1:50



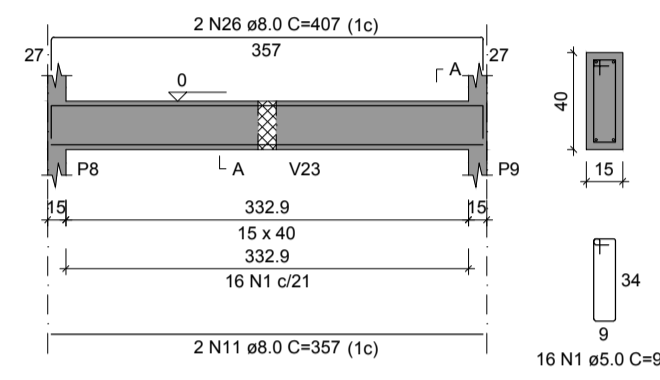
V3 ESC 1:50



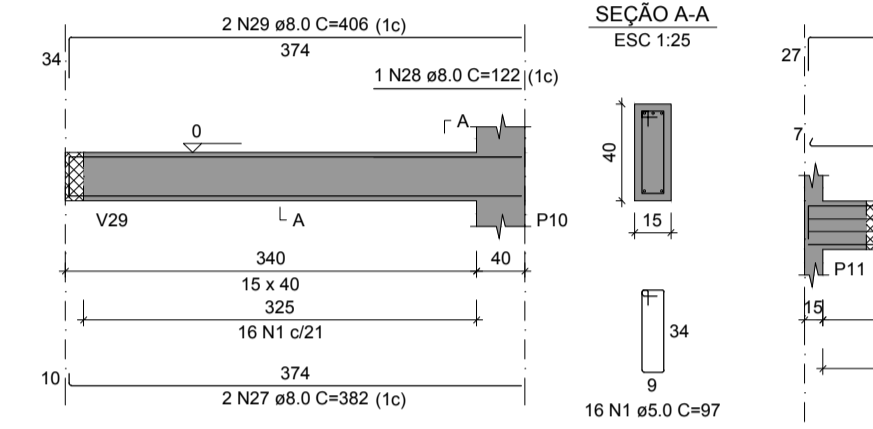
V4 ESC 1:50



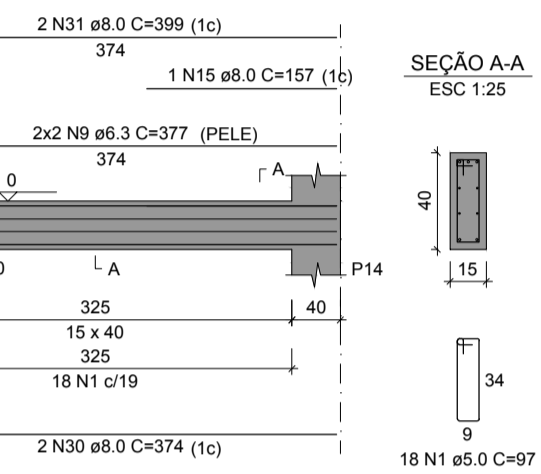
V5 ESC 1:50



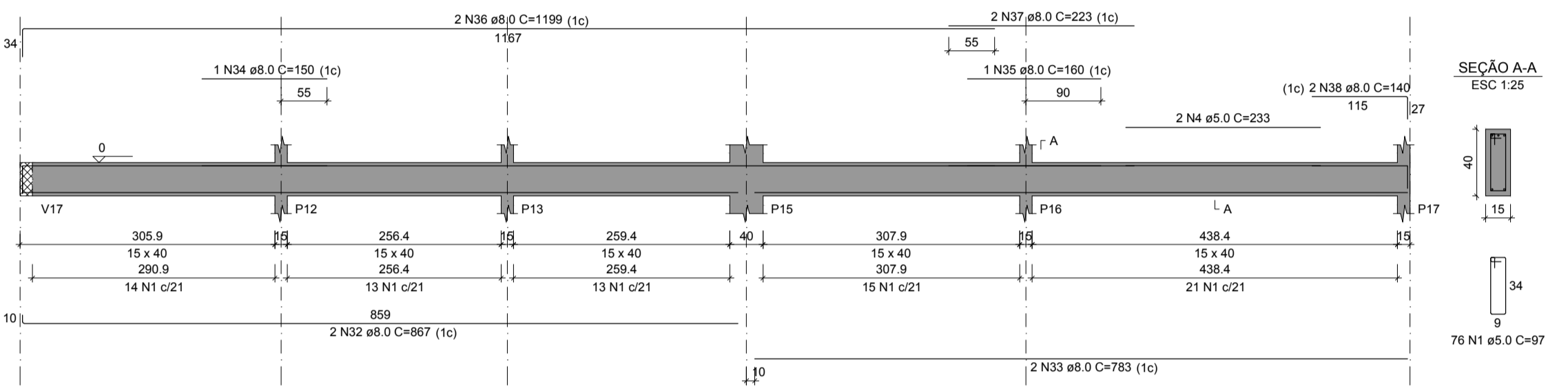
V6 ESC 1:50



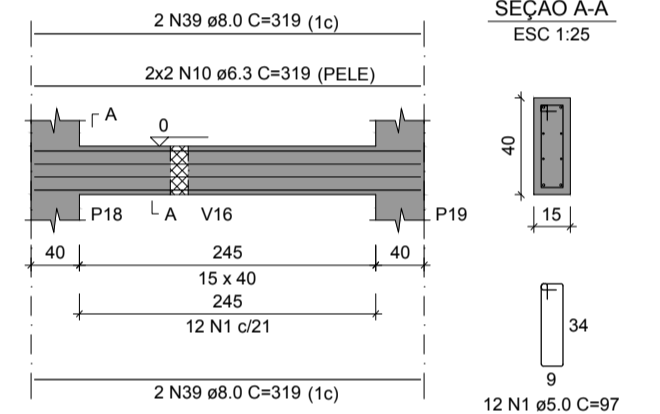
V7 ESC 1:50



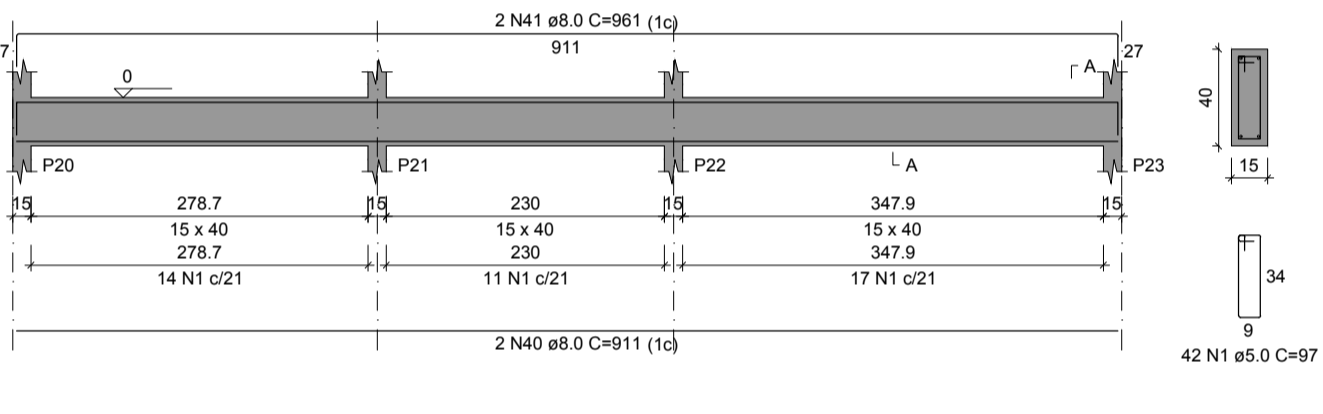
V8 ESC 1:50



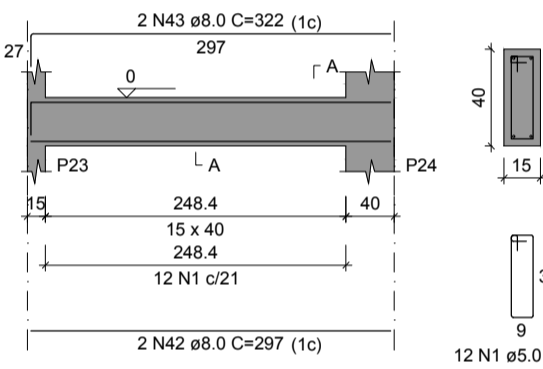
V9 ESC 1:50



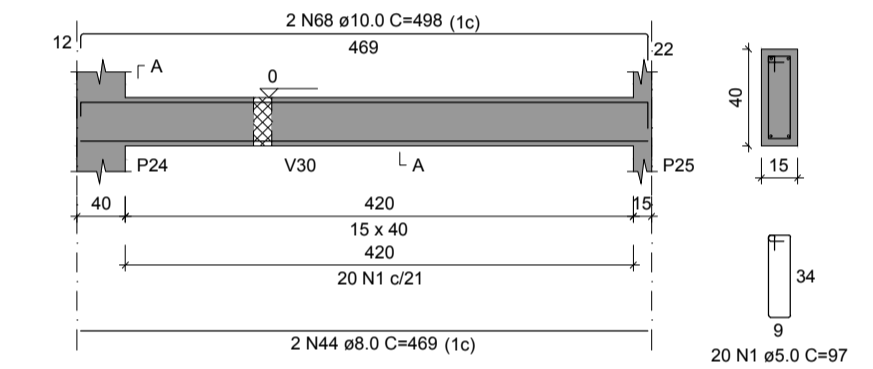
V10 ESC 1:50



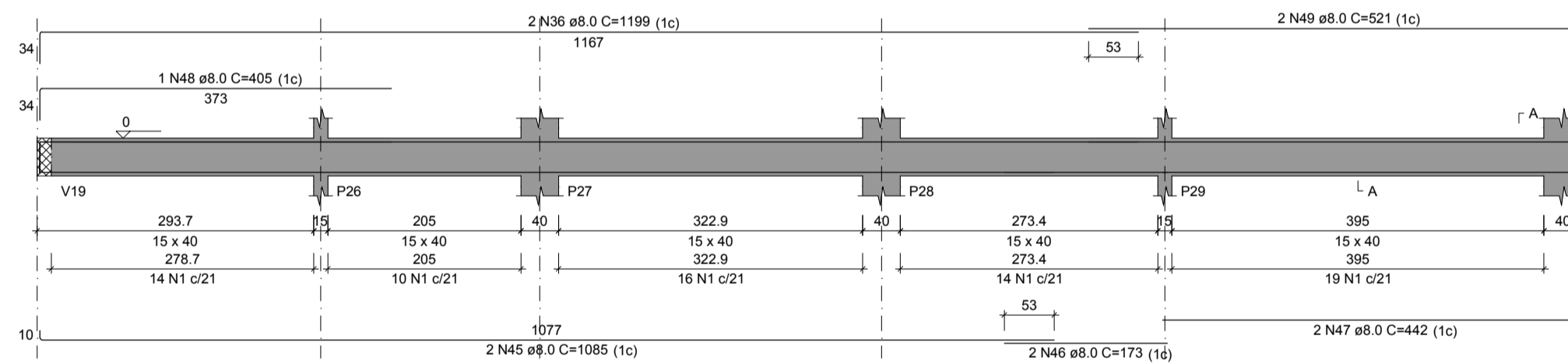
V11 ESC 1:50



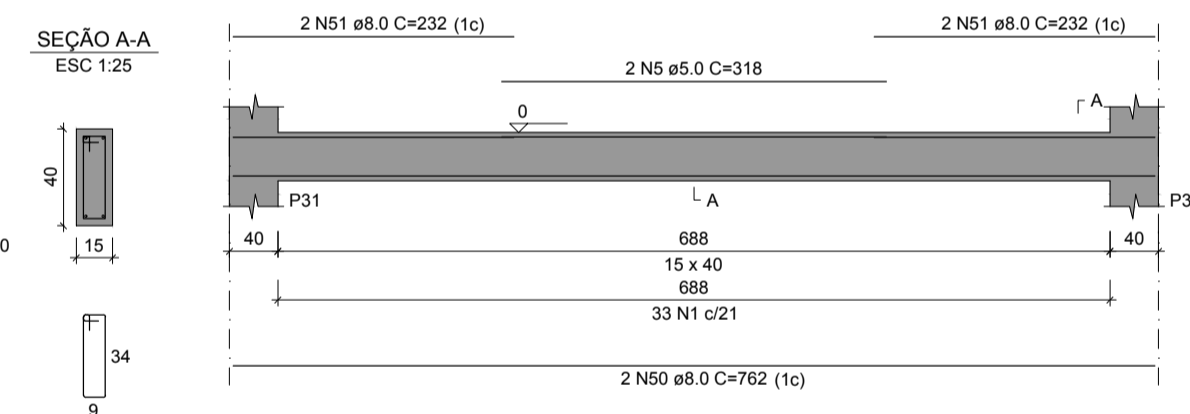
V12 ESC 1:50



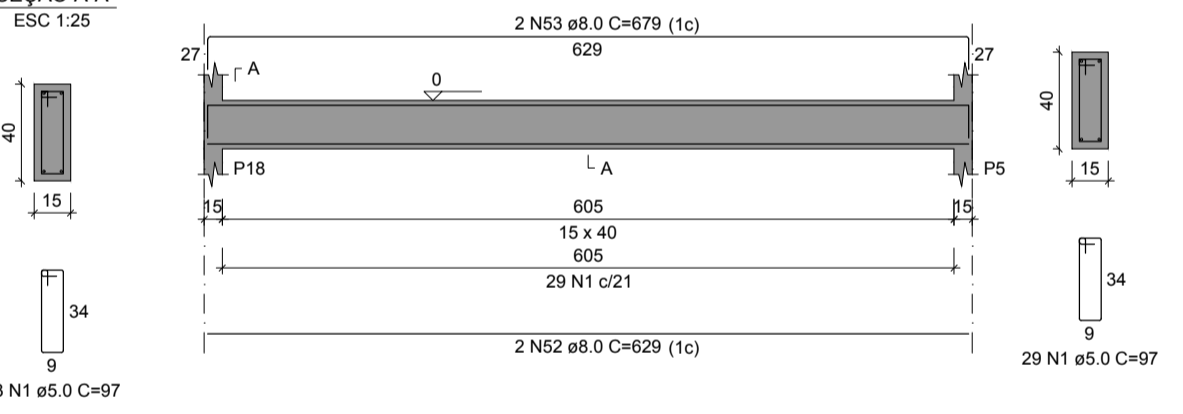
V13 ESC 1:50



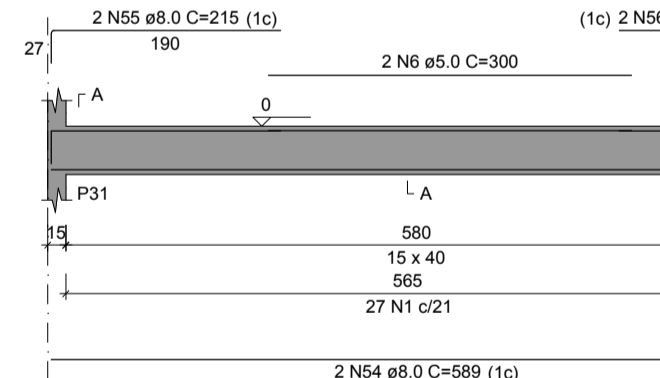
V14 ESC 1:50



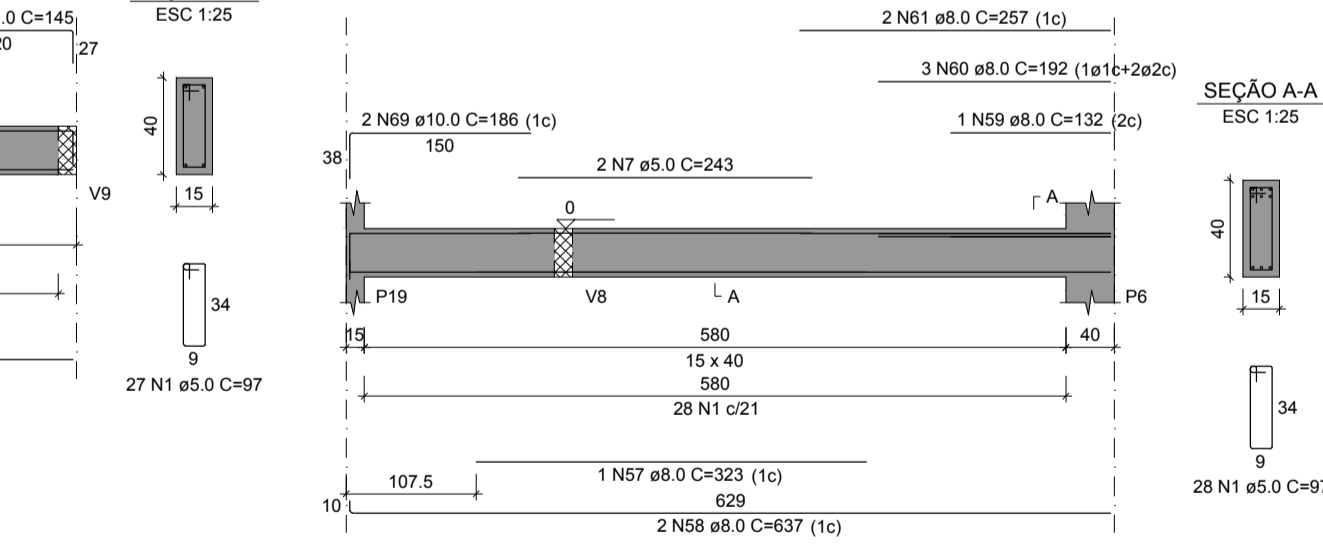
V15 ESC 1:50



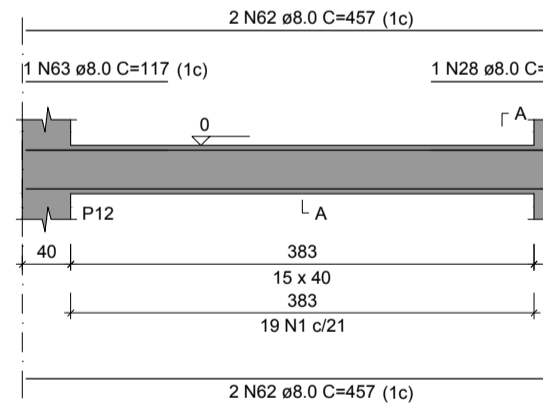
V16 ESC 1:50



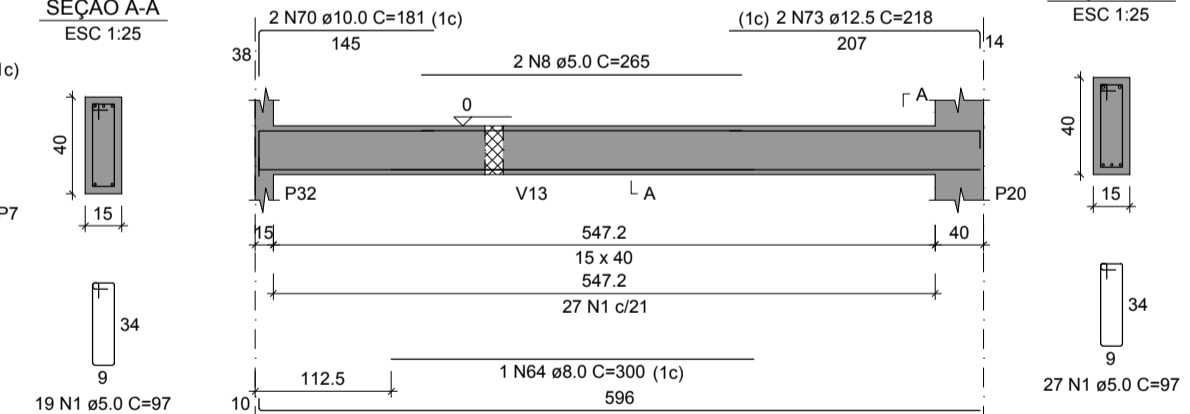
V17 ESC 1:50



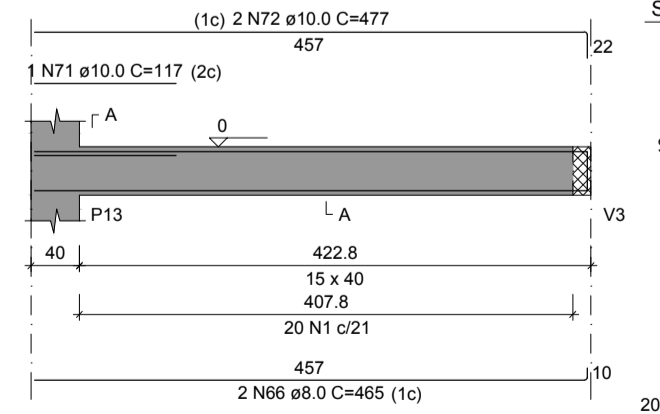
V18 ESC 1:50



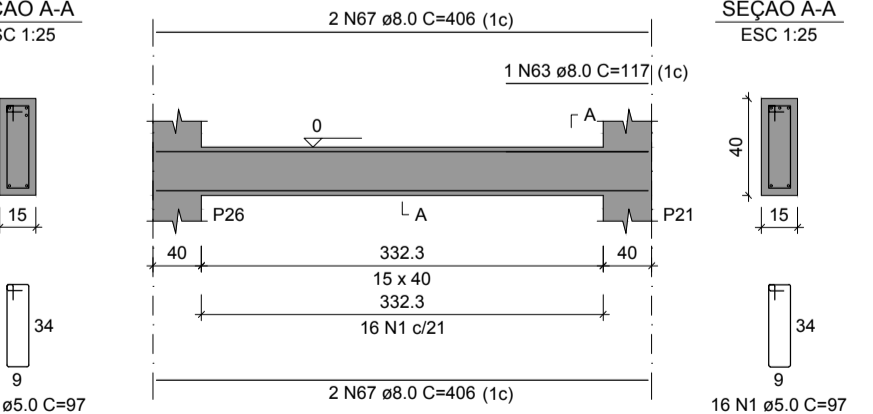
V19 ESC 1:50



V20 ESC 1:50



V21 ESC 1:50



RELAÇÃO DO AÇO

CAÇO	N	DIAM (mm)	QUANT	CUNHET (cm)	C.TOTAL (cm)
	1	5.0	997	97	57909
	2	5.0	2	288	532
	3	5.0	2	303	606
	4	5.0	2	233	466
	5	5.0	2	318	638
	6	5.0	2	300	600
	7	5.0	2	243	486
	8	5.0	2	265	530
	9	6.3	4	357	1428
	10	6.3	4	319	1276
	11	8.0	4	357	1428
	12	8.0	2	382	764
	13	8.0	1	288	288
	14	8.0	3	562	1686
	15	8.0	4	157	628
	16	8.0	2	1171	2342
	17	8.0	2	291	582
	18	8.0	3	235	705
	19	8.0	2	820	1640
	20	8.0	2	130	260
	21	8.0	1	288	288
	22	8.0	2	462	924
	23	8.0	2	125	250
	24	8.0	2	105	210
	25	8.0	2	407	814
	26	8.0	2	382	764
	27	8.0	2	223	446
	28	8.0	2	406	812
	29	8.0	2	374	748
	30	8.0	2	399	798
	31	8.0	2	867	1734
	32	8.0	2	783	1566
	33	8.0	2	867	1734
	34	8.0	2	150	300
	35	8.0	1	160	160
	36	8.0	4	1199	4796
	37	8.0	2	223	446
	38	8.0	2	140	280
	39	8.0	4	319	1276
	40	8.0	2	911	1822
	41	8.0	2	961	1922
	42	8.0	2	297	594
	43	8.0	2	322	644
	44	8.0	2	469	938
	45	8.0	2	1085	2170
	46	8.0	2	173	346
	47	8.0	2	442	884
	48	8.0	1	405	405
	49	8.0	2	521	1042
	50	8.0	2	762	1524
	51	8.0	4	232	928
	52	8.0	2	629	1258
	53	8.0	2	679	1358
	54	8.0	2	589	1178
	55	8.0	2	215	430
	56	8.0	2	145	290
	57	8.0	1	323	323
	58	8.0	2	637	1274
	59	8.0	1	132	132
	60	8.0	2	182	364
	61	8.0	2	257	514
	62	8.0	4	457	1828
	63	8.0	2	117	234
	64	8.0	1	300	300
	65	8.0	2	604	1208
	66	8.0	2	465	930
	67	8.0	4	406	1624
	68	10.0	2	498	996
	69	10.0	2	186	372
	70	10.0	2	181	362
	71	10.0	1	117	117
	72	10.0	2	477	954
	73	12.5	2	218	436

RESUMO DO AÇO

CAÇO	DIAM (mm)	C.TOTAL (m)	PESO + 10% (kg)
CA50	4.3	27.8	7.5
	5.0	543.5	235.9
	6.3	28	19
	8.0	4.4	4.6
CA60	5.0	617.6	104.7
PESO TOTAL (kg)			
CA50		267	
CA60		104.7	

Volume de concreto (C-25) = 7.35 m³
Área de forma = 128.98 m²

PROJETO ESTRUTURAL:
 ENG. FÁBIO FURTADO
 CREA 151914/0904 PA
 EXECUÇÃO:
 RESP. TÉCNICO:
 CONSTRUÇÃO:
 PROPRIETÁRIO:

SECRETARIA MUNICIPAL DE SAÚDE
 Obra: **UBS GRAJAU**
 End.: Tv. Rui Barbosa, S/° Bairro Icauí - Ananindeua Pará

ANANINDEUA
 É TRABALHO

Equipe Técnica: Departamento de Projetos
 Área Construída: 295,82 m²
 Área do Terreno: 587,00 m²
 CAD: ENG. FÁBIO FURTADO

Data: AGO./2023
 Escala: Indicada
 Execução: Agosto_2023

Conteúdo: PROJETO ESTRUTURAL - VIGAS FUNDAÇÃO
 Secretária:

ARQUITETURA
07
 10