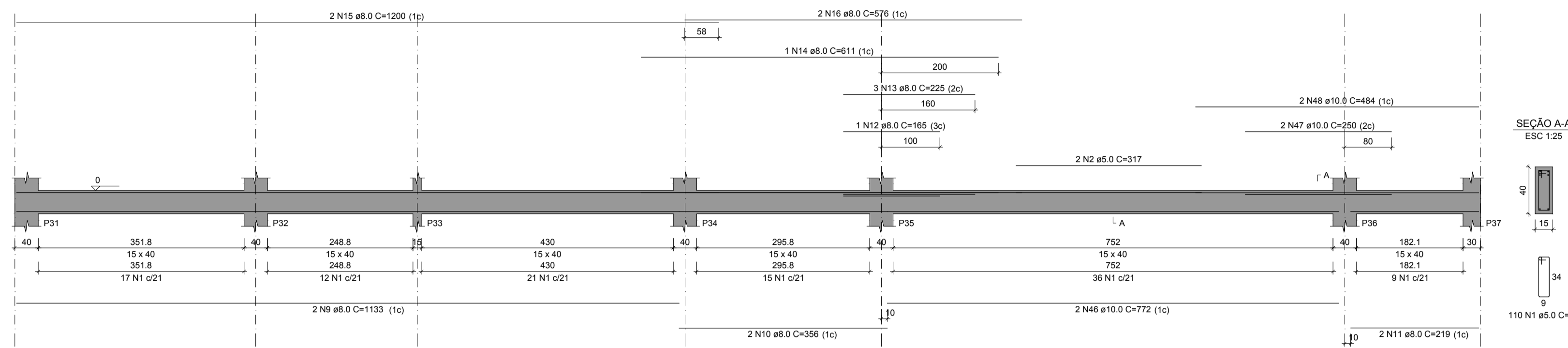
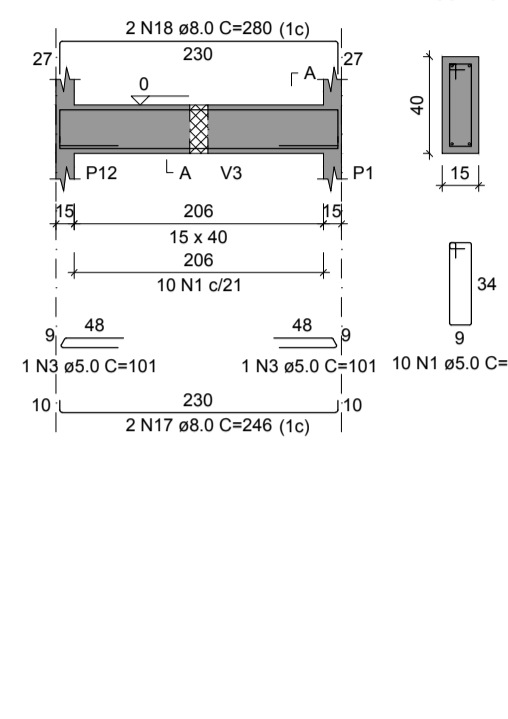


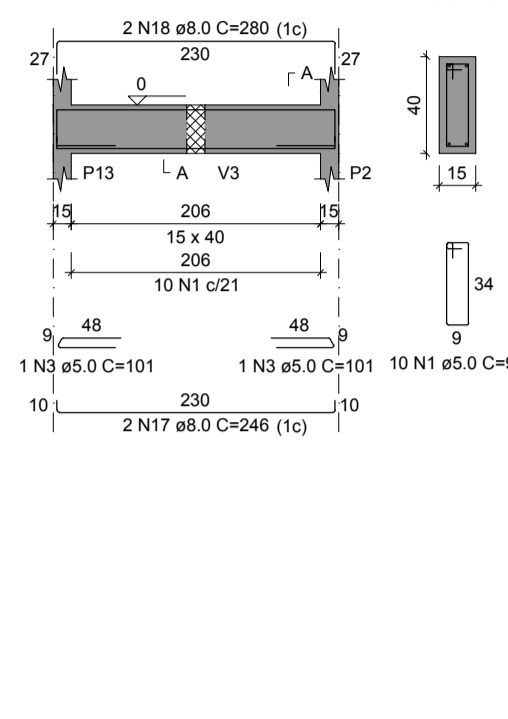
**V15**  
ESC 1:50



**V16**  
ESC 1:50



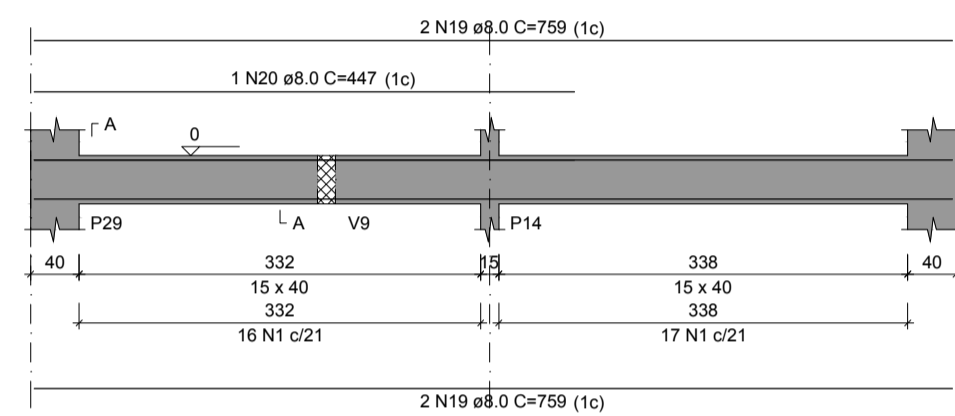
**V17**  
ESC 1:50



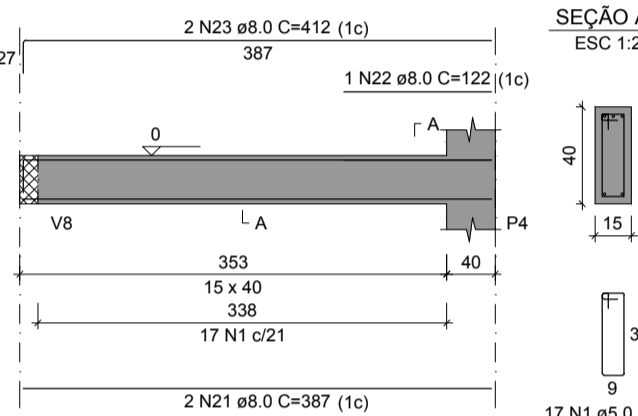
RELAÇÃO DO AÇO

ACO	N	DIAM (mm)	QUANT	C.UNIT (cm)	C.TOTAL (cm)
V15	1	5.0	97		5040
V15	2	5.0	2	317	634
V15	3	5.0	9	101	909
V15	4	5.0	2	387	774
V15	5	5.0	2	196	392
V15	6	6.3	8	387	3096
V15	7	6.3	4	381	1524
V15	8	6.3	4	384	1536
V15	9	8.0	2	1133	2266
V15	10	8.0	2	356	712
V15	11	8.0	2	219	438
V15	12	8.0	1	165	165
V15	13	8.0	1	225	225
V15	14	8.0	1	611	611
V15	15	8.0	2	1200	2400
V15	16	8.0	2	576	1152
V15	17	8.0	4	246	984
V15	18	8.0	4	280	1120
V15	19	8.0	4	759	3036
V15	20	8.0	1	447	447
V15	21	8.0	17	387	6579
V15	22	8.0	3	122	366
V15	23	8.0	4	412	1648
V15	24	8.0	2	254	508
V15	25	8.0	2	271	542
V15	26	8.0	6	389	2334
V15	27	8.0	1	127	127
V15	28	8.0	2	406	812
V15	29	8.0	1	173	173
V15	30	8.0	2	431	862
V15	31	8.0	1	227	227
V15	32	8.0	3	381	1143
V15	33	8.0	2	253	506
V15	34	8.0	2	196	392
V15	35	8.0	2	162	324
V15	36	8.0	1	122	122
V15	37	8.0	3	407	1221
V15	38	8.0	2	407	814
V15	39	8.0	2	395	790
V15	40	8.0	2	147	294
V15	41	8.0	2	419	838
V15	42	8.0	2	267	534
V15	43	8.0	2	301	602
V15	44	8.0	2	403	806
V15	45	8.0	2	436	872
V15	46	10.0	2	772	1544
V15	47	10.0	2	250	500
V15	48	10.0	2	484	968
V15	49	10.0	8	387	3096
V15	50	10.0	2	172	344
V15	51	10.0	2	137	274
V15	52	10.0	2	391	782
V15	53	10.0	3	391	1173
V15	54	10.0	1	327	327
V15	55	10.0	2	535	1070
V15	56	10.0	1	150	150
V15	57	10.0	1	148	148
V15	58	10.0	2	578	1156
V15	59	12.5	1	157	157
V15	60	12.5	2	398	796

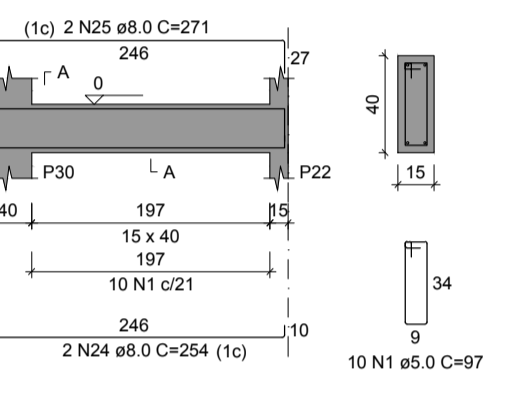
**V18**  
ESC 1:50



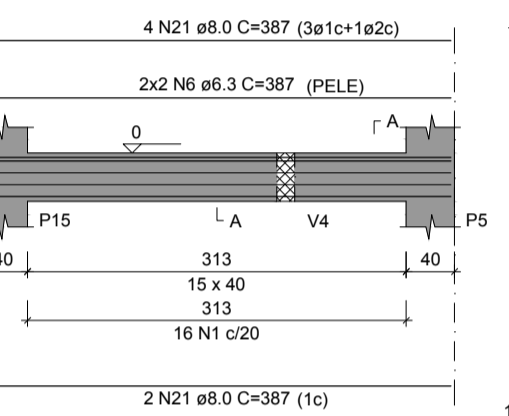
**V19**  
ESC 1:50



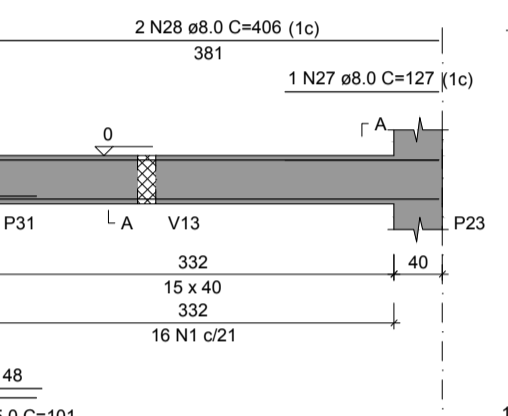
**V20**  
ESC 1:50



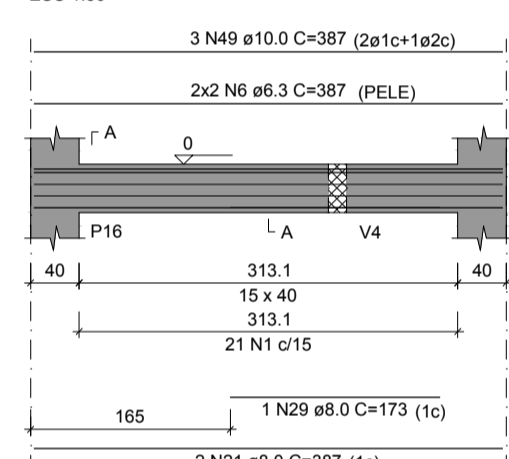
**V21**  
ESC 1:50



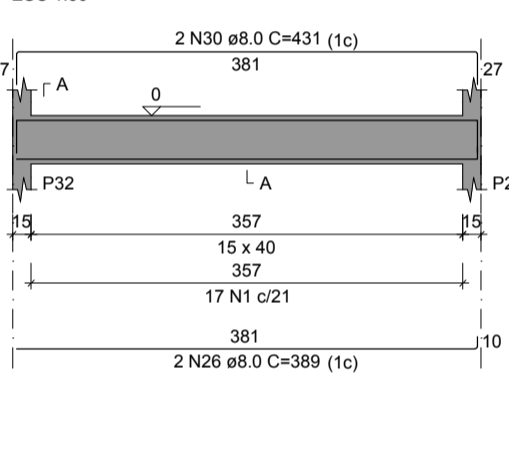
**V22**  
ESC 1:50



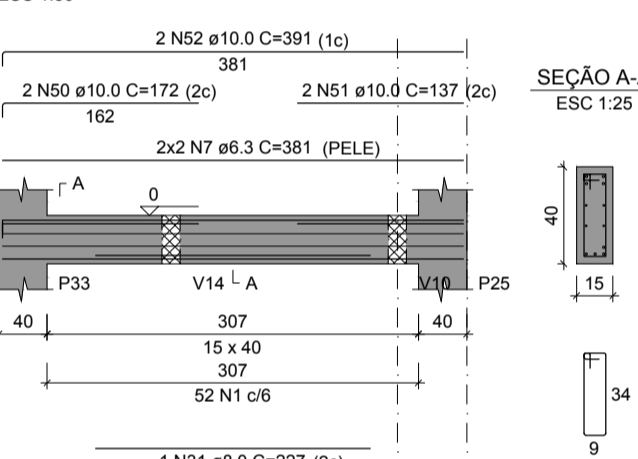
**V23**  
ESC 1:50



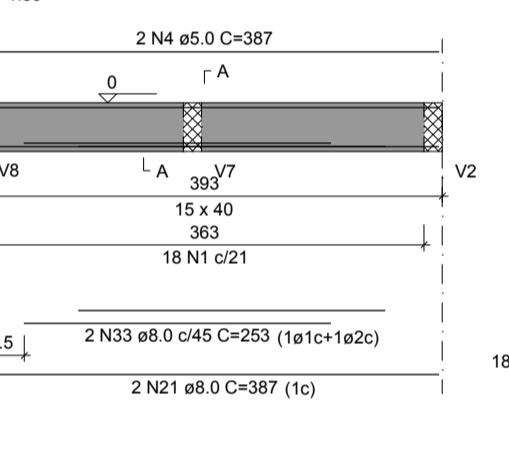
**V24**  
ESC 1:50



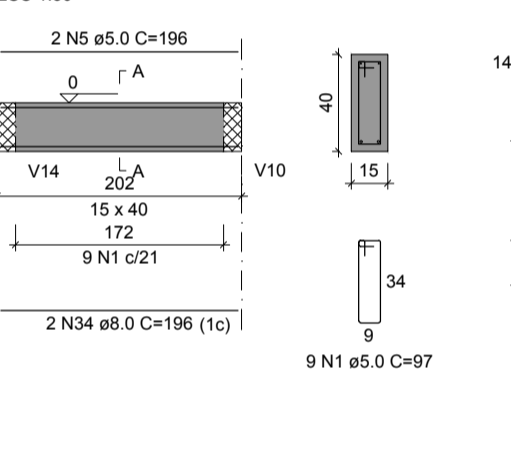
**V25**  
ESC 1:50



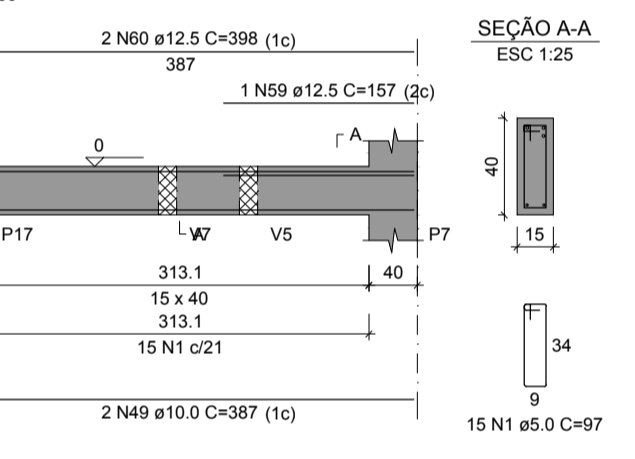
**V26**  
ESC 1:50



**V27**  
ESC 1:50



**V28**  
ESC 1:50

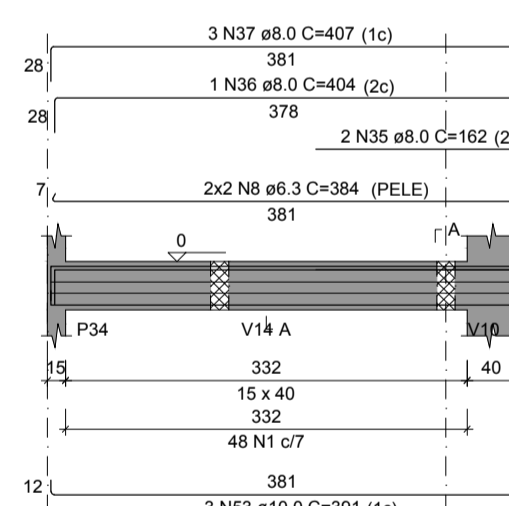


RESUMO DO AÇO

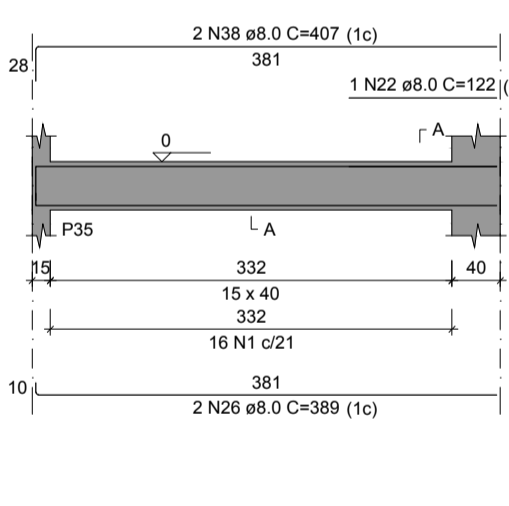
ACO	DIAM (mm)	C.TOTAL (m)	PESO + 10% (kg)
CA50	6.3	61.6	16.6
CA50	8.0	377.3	163.8
CA50	10.0	115.3	78.2
CA50	12.5	9.5	10.1
CA60	5.0	531.5	90.1

Volume de concreto (C-25) = 5.49 m³  
Área de forma = 99.25 m²

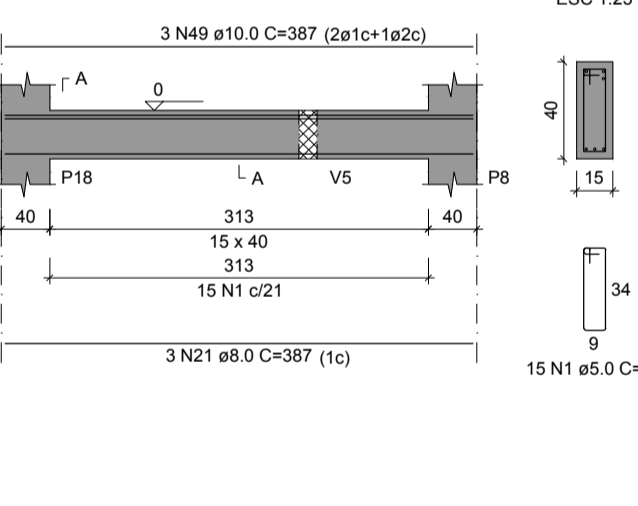
**V29**  
ESC 1:50



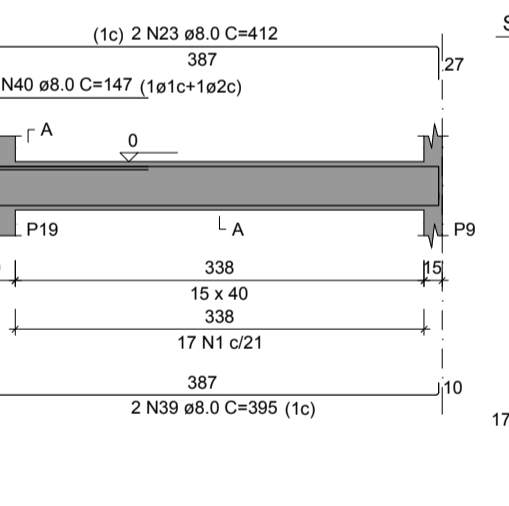
**V30**  
ESC 1:50



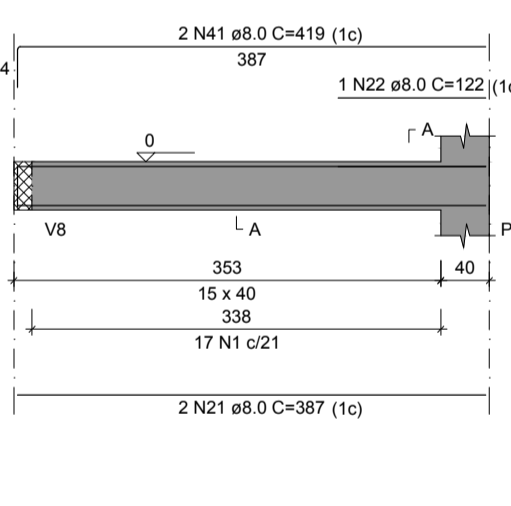
**V31**  
ESC 1:50



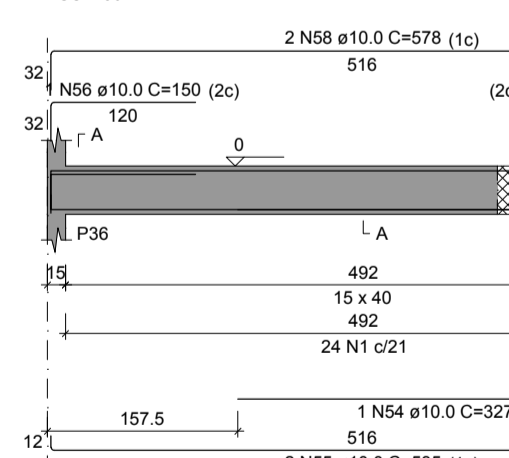
**V32**  
ESC 1:50



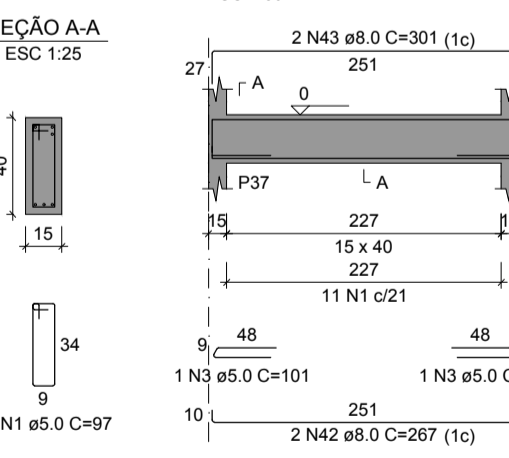
**V33**  
ESC 1:50



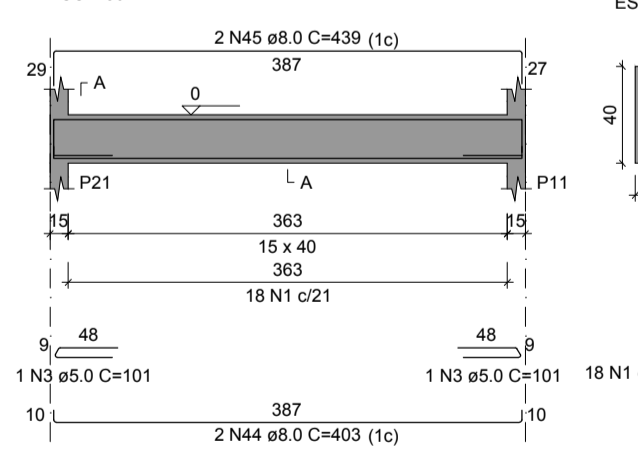
**V34**  
ESC 1:50



**V35**  
ESC 1:50



**V36**  
ESC 1:50



PROJETO ESTRUTURAL:  
ENG. FÁBIO FURTADO  
CREA 1519146094 PA  
EXECUÇÃO:  
RESP. TÉCNICO:  
CONSTRUÇÃO:  
PROPRIETÁRIO:

SECRETARIA MUNICIPAL DE SAÚDE  
Obra: UBS STELIO MAROJA  
End.: Rodovia dos Trabalhadores, S/Nº Coqueiro - Ananindeua Pará  
Equipe Técnica: Departamento de Projetos  
Área Construída: 230,99 m²  
Data: Jul./2023  
Escala: Indicada  
Execução: Agosto\_2023  
Conteúdo: PROJETO ESTRUTURAL - VIGAS  
FUNDAÇÃO  
Secretária:

