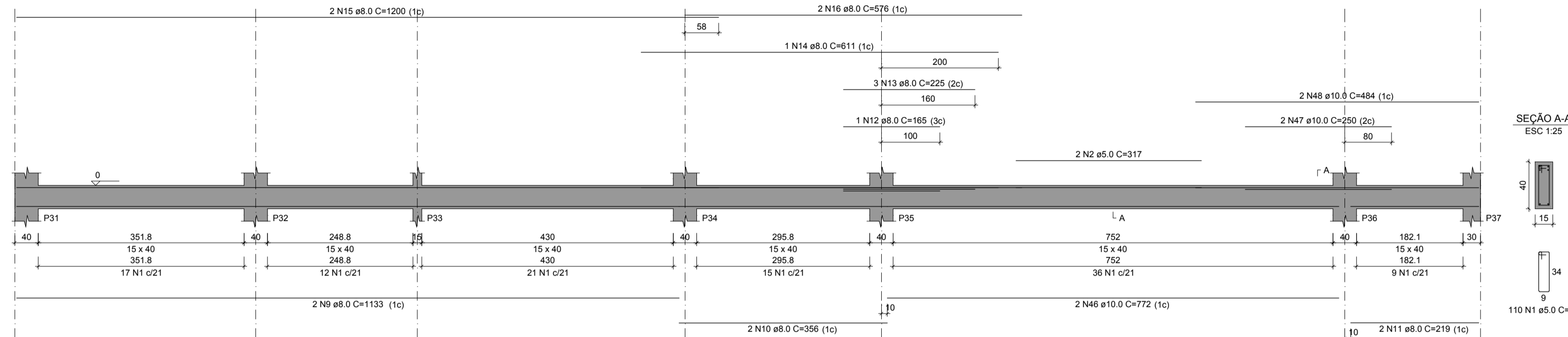


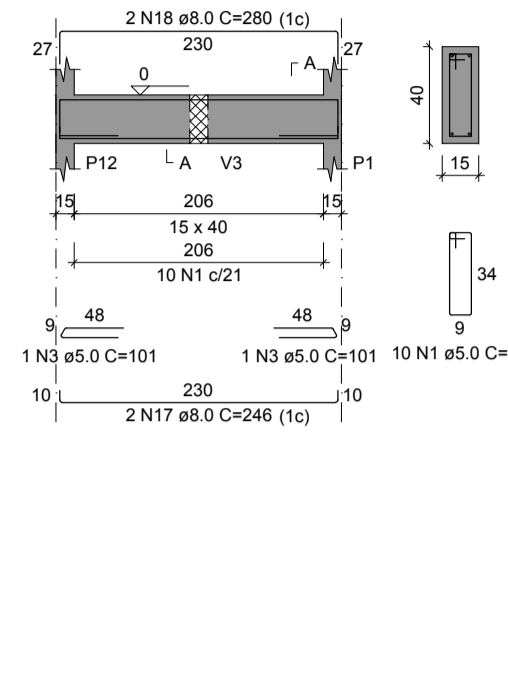
V15

ESC 1:50



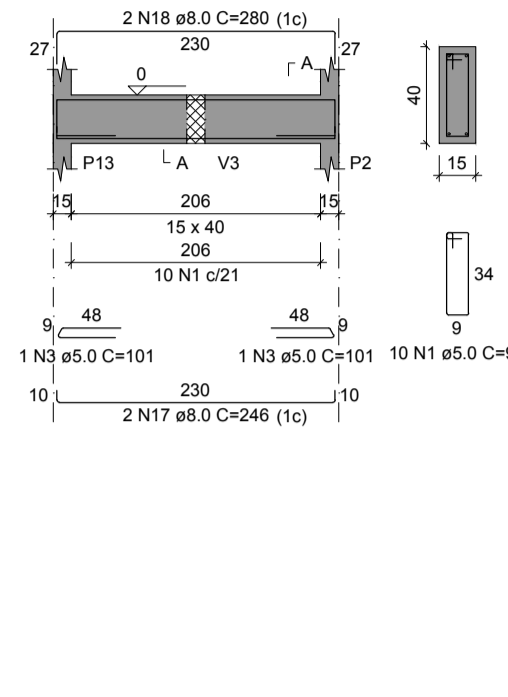
V16

ESC 1:50



V17

ESC 1:50

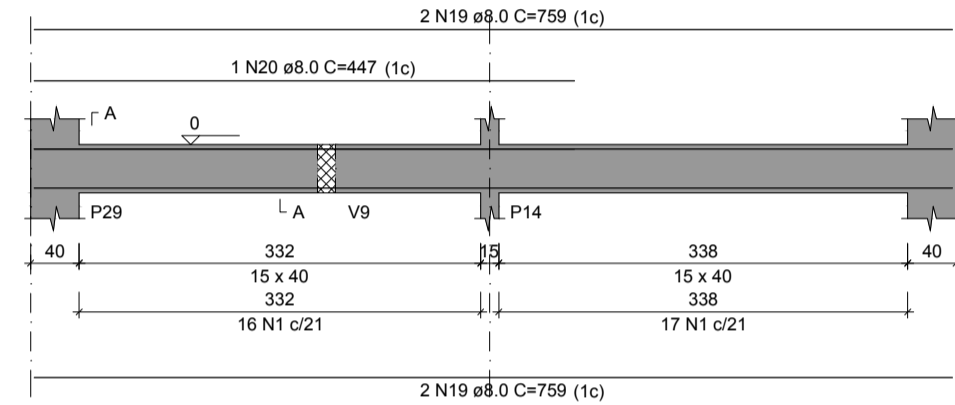


RELAÇÃO DO AÇO

ACO	N	DIAM (mm)	QUANT	C.UNIT (cm)	C.TOTAL (cm)
V15	1	5.0	97		50440
V16	2	5.0	2	317	634
V17	3	5.0	9	101	909
V21	4	5.0	2	387	774
V24	5	5.0	2	196	392
V28	6	6.3	8	387	3096
V29	7	6.3	4	381	1524
V30	8	6.3	4	384	1536
V31	9	8.0	2	1133	2266
V32	10	8.0	2	356	712
V33	11	8.0	2	219	438
V36	12	8.0	1	165	165
	13	8.0	1	225	225
	14	8.0	1	611	611
	15	8.0	2	1000	2000
	16	8.0	2	576	1152
	17	8.0	4	246	984
	18	8.0	4	280	1120
	19	8.0	4	759	3036
	20	8.0	1	447	447
	21	8.0	17	387	6579
	22	8.0	3	122	366
	23	8.0	4	412	1648
	24	8.0	2	254	508
	25	8.0	2	271	542
	26	8.0	6	389	2334
	27	8.0	1	127	127
	28	8.0	2	406	812
	29	8.0	1	173	173
	30	8.0	2	431	862
	31	8.0	1	227	227
	32	8.0	3	381	1143
	33	8.0	2	253	506
	34	8.0	2	196	392
	35	8.0	2	162	324
	36	8.0	1	122	122
	37	8.0	3	407	1221
	38	8.0	2	407	814
	39	8.0	2	395	790
	40	8.0	2	147	294
	41	8.0	2	419	838
	42	8.0	2	267	534
	43	8.0	2	301	602
	44	8.0	2	403	806
	45	8.0	2	436	872
	46	10.0	2	772	1544
	47	10.0	2	250	500
	48	10.0	2	484	968
	49	10.0	8	387	3096
	50	10.0	2	172	344
	51	10.0	2	137	274
	52	10.0	2	391	782
	53	10.0	3	391	1173
	54	10.0	1	327	327
	55	10.0	2	535	1070
	56	10.0	1	150	150
	57	10.0	1	148	148
	58	10.0	2	578	1156
	59	12.5	1	157	157
	60	12.5	2	398	796

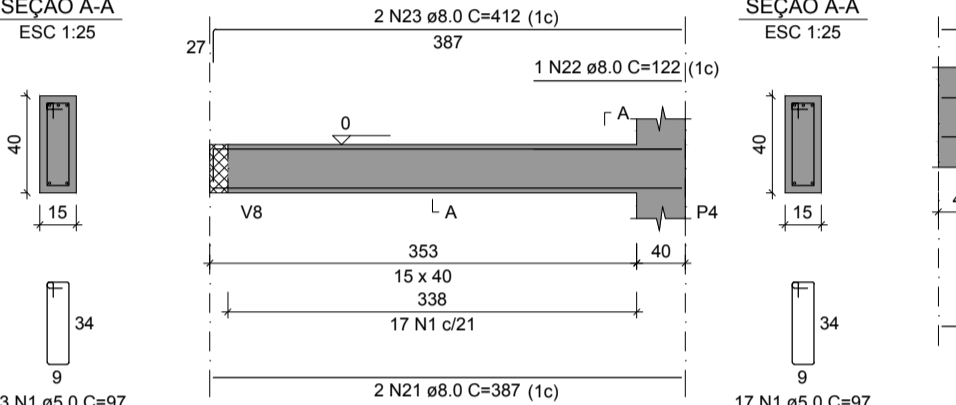
V18

ESC 1:50



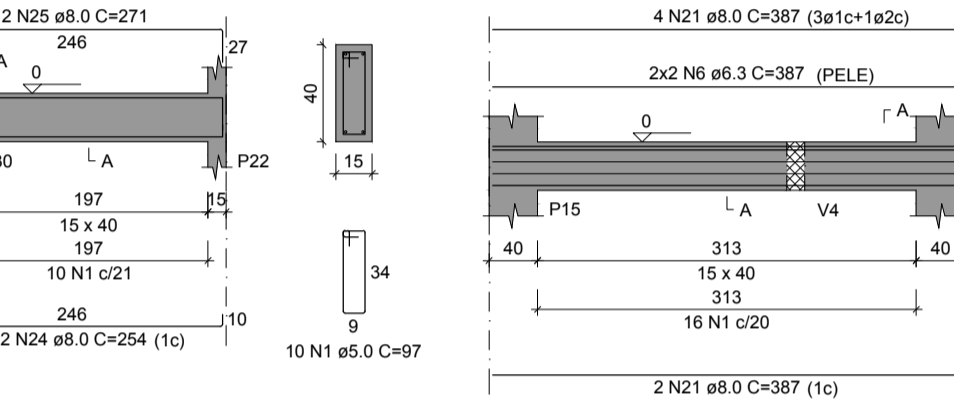
V19

ESC 1:50



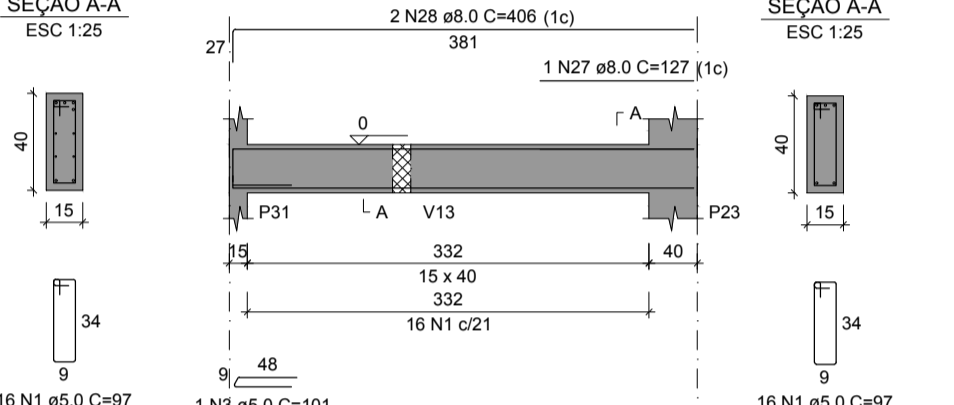
V20

ESC 1:50



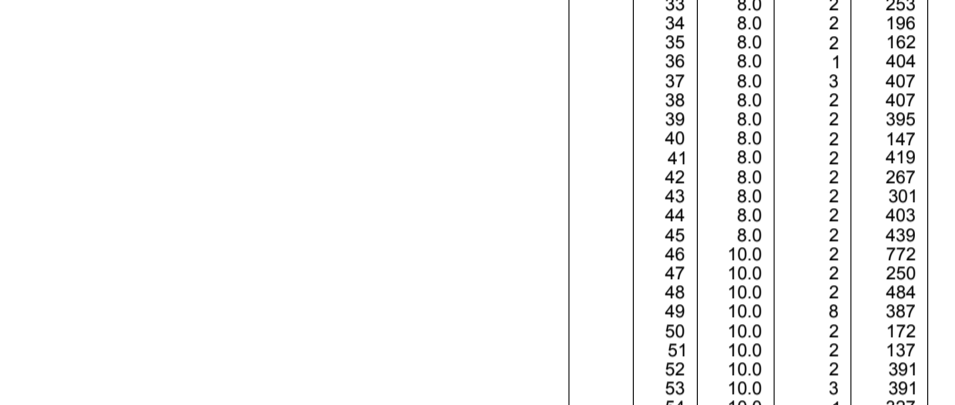
V21

ESC 1:50



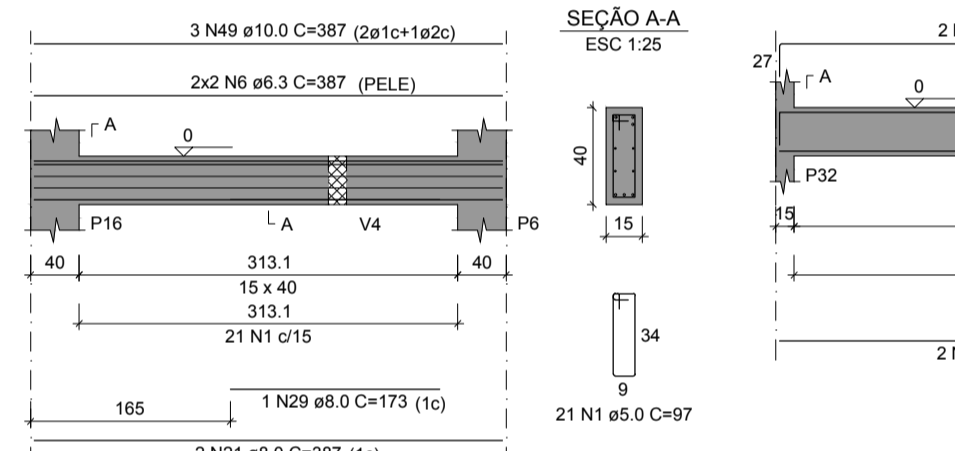
V22

ESC 1:50



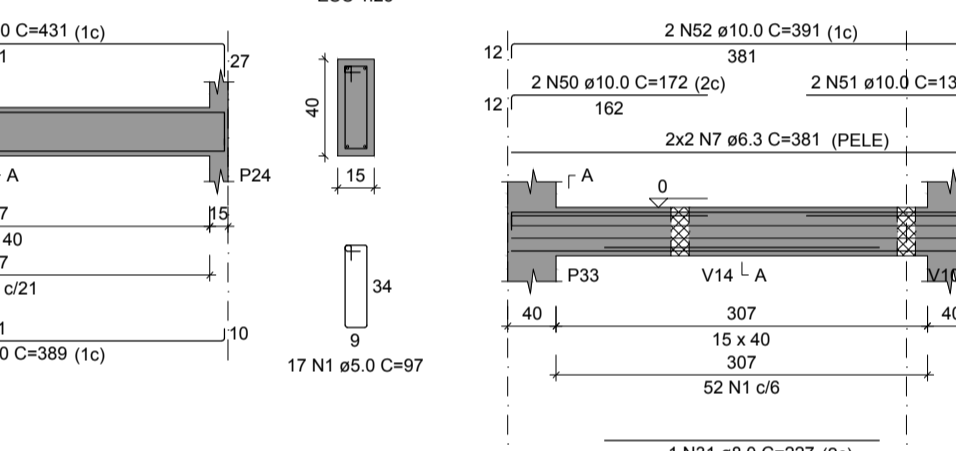
V23

ESC 1:50



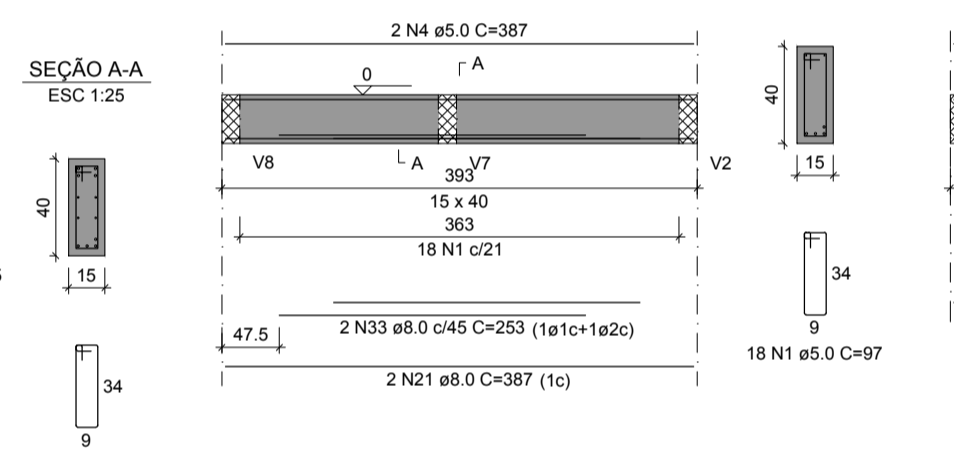
V24

ESC 1:50



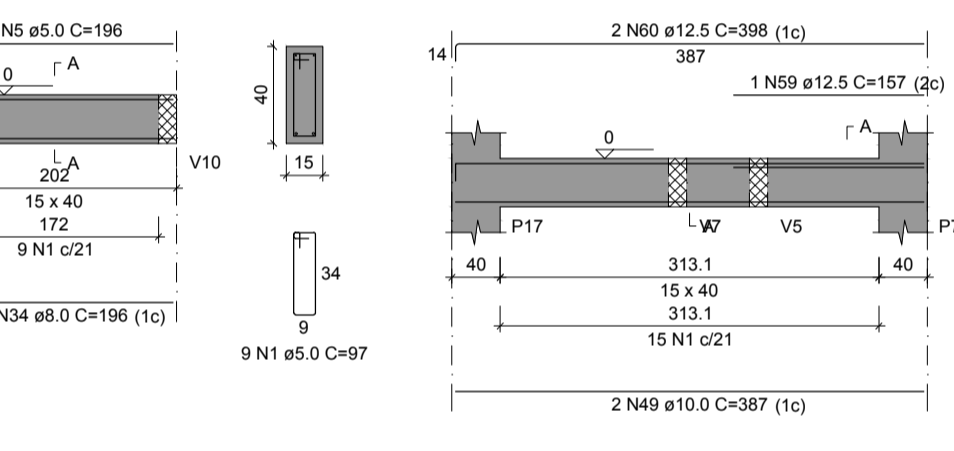
V25

ESC 1:50



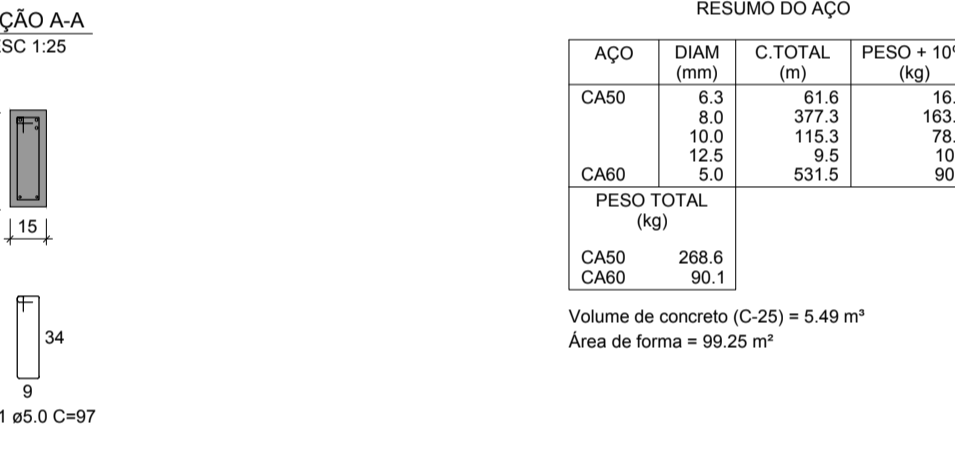
V26

ESC 1:50



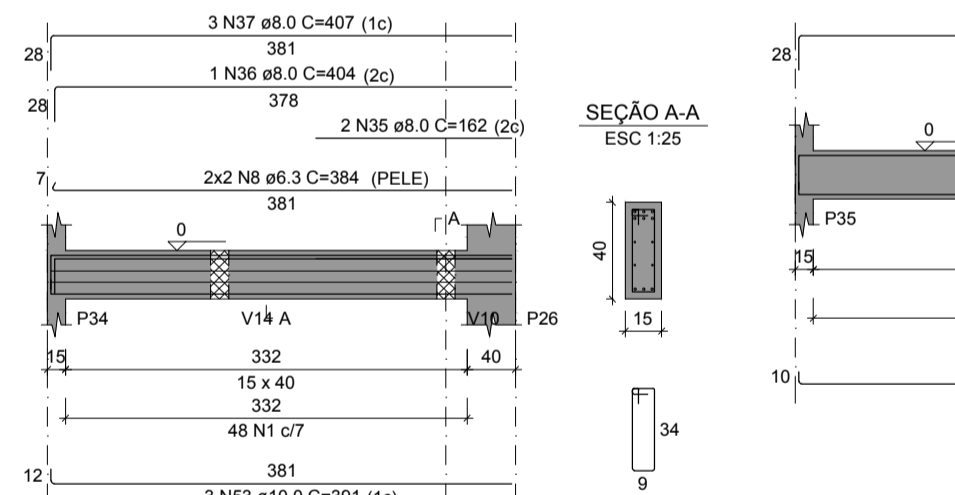
V27

ESC 1:50



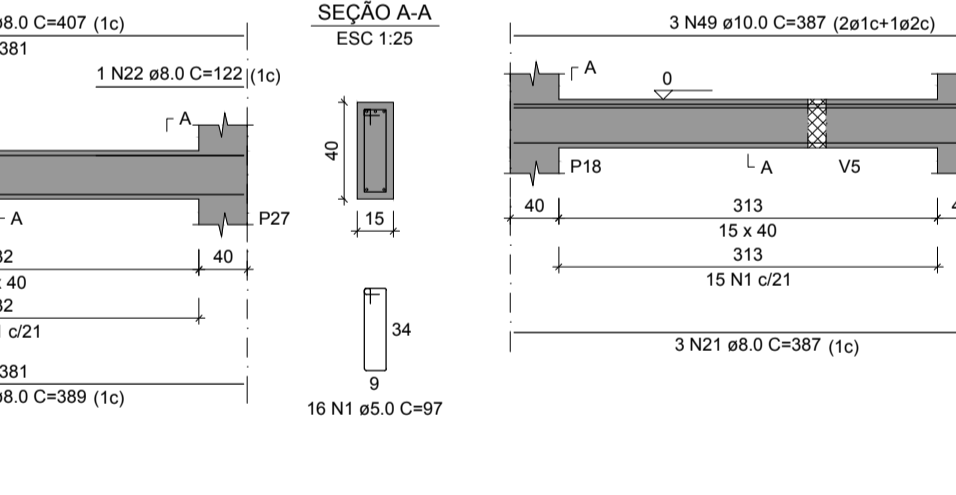
V29

ESC 1:50



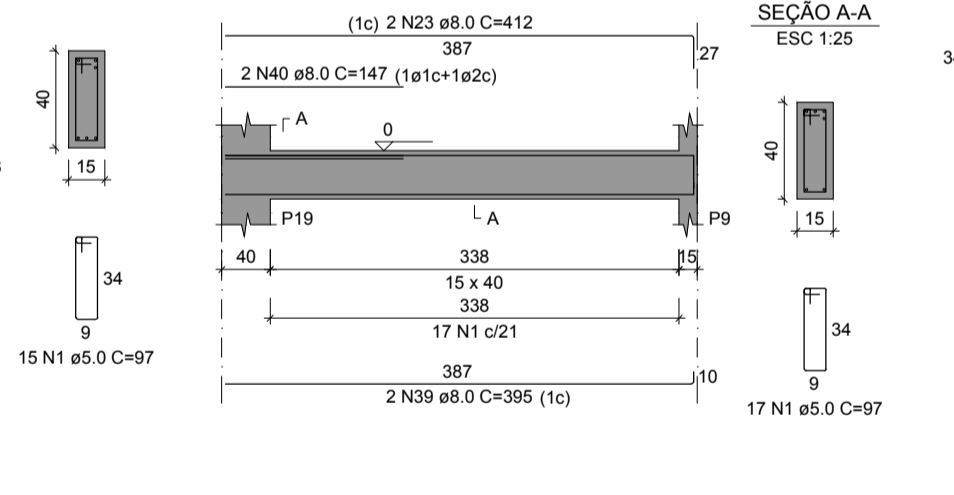
V30

ESC 1:50



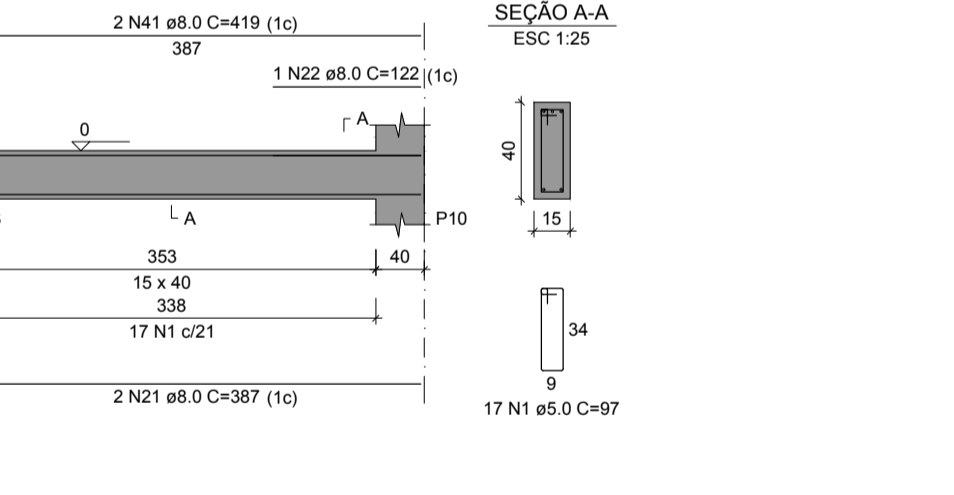
V31

ESC 1:50



V32

ESC 1:50



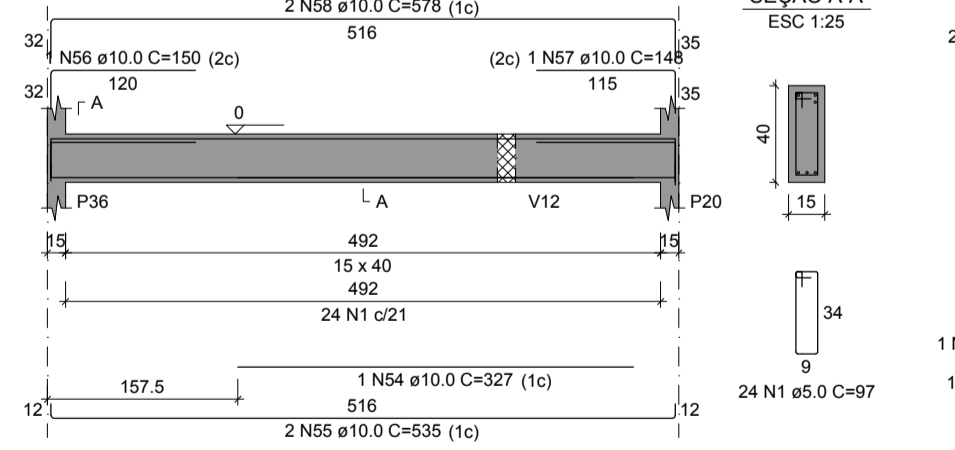
V33

ESC 1:50



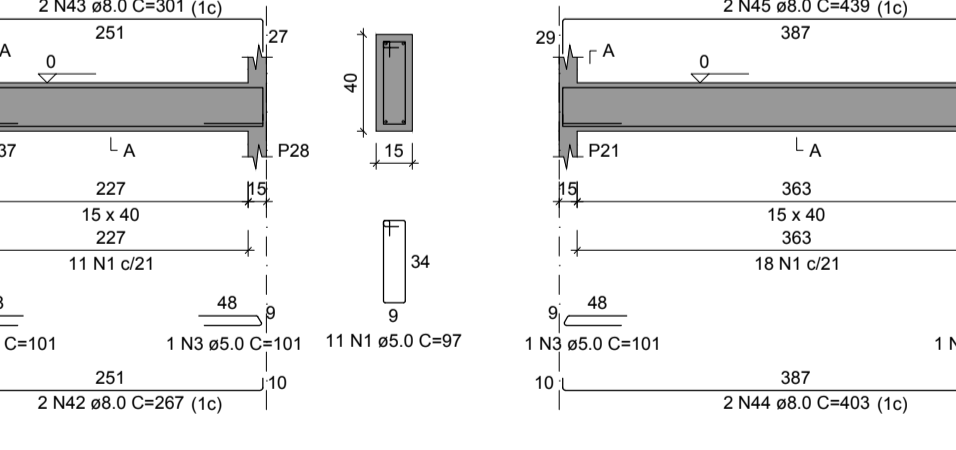
V34

ESC 1:50



V35

ESC 1:50



V36

ESC 1:50



RESUMO DO AÇO

ACO	DIAM (mm)	C.TOTAL (m)	PESO + 10% (kg)
CA50	6.3	61.6	16.6
	8.0	377.3	163.8
	10.0	115.3	78.2
	12.5	9.5	10.1
CA60	5.0	531.5	90.1

PESO TOTAL (kg)
CA50 268.6
CA60 90.1
Volume de concreto (C-25) = 5.49 m³
Área de forma = 99.25 m²

PROJETO ESTRUTURAL:
ENG. FÁBIO FURTADO
CREA 1519146094 PA
EXECUÇÃO:
RESP. TÉCNICO:
CONSTRUÇÃO:
PROPRIETÁRIO:

SECRETARIA MUNICIPAL DE SAÚDE
Obra: UBS STELIO MAROJA
End.: Rodovia dos Trabalhadores, S/Nº Coqueiro - Ananindeua Pará

ANANINDEUA
É TRABALHO

Equipe Técnica: Departamento de Projetos
Área Construída: 230,99 m²
Data: Jul./2023
Escala: Indicada
Execução: Agosto_2023

Conteúdo: PROJETO ESTRUTURAL - VIGAS
FUNDAÇÃO
Secretária:

PRANCHA
14
16